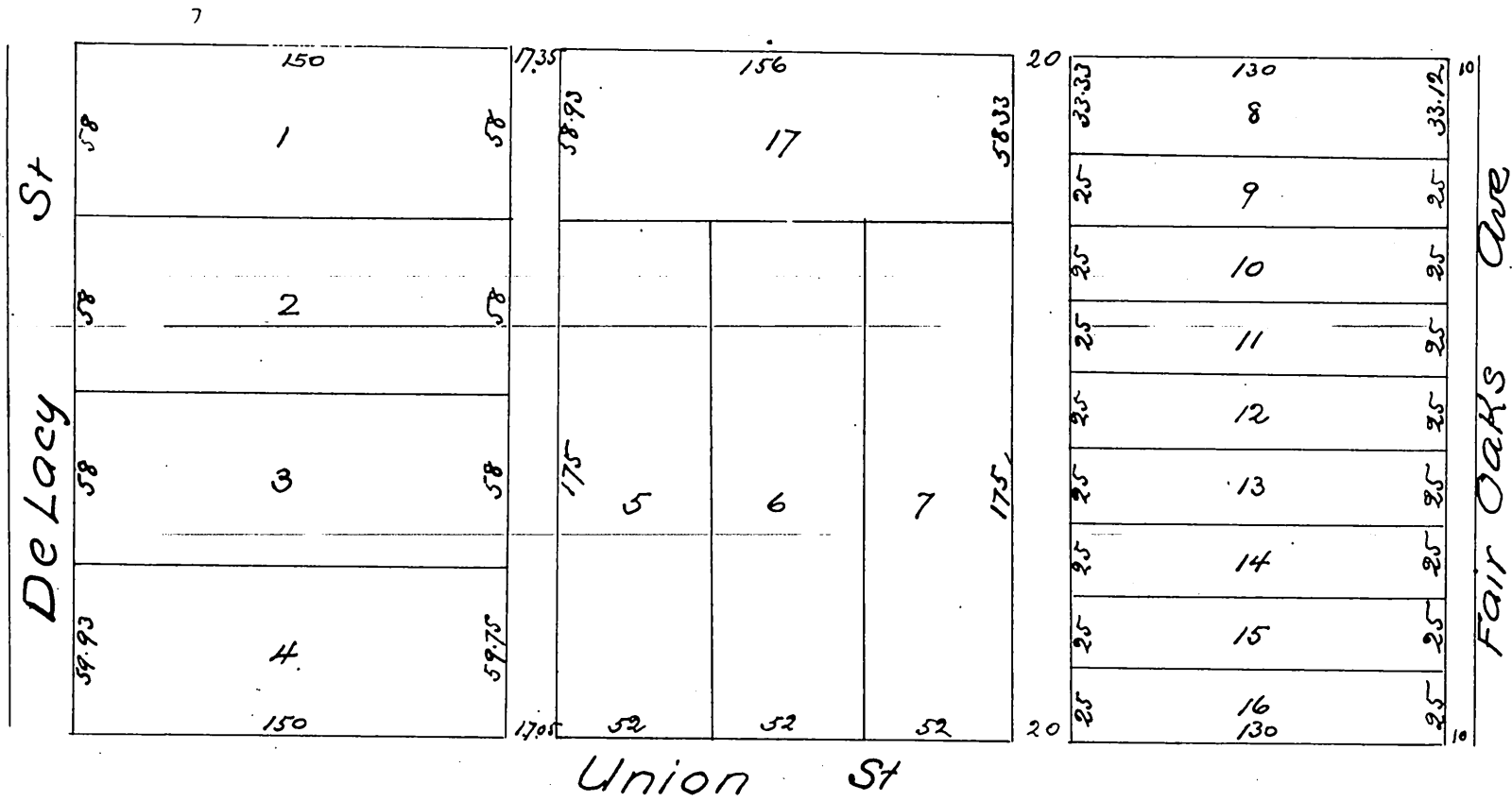


Map
 OF
 Ball's Subdivision
 of the North East portion of
 The Carr Tract
 Pasadena Cal
 Surveyed July 1886 by J.M. Willard C.E.
 Scale 40 ft = 1 inch



a full, true and correct copy of the original
 (reduced to the scale of 60 feet to one inch)
 recorded Oct 19th 1886 at 11²⁴ A.M. at request
 of B. F. Ball
 Frank A. Gibson County Recorder
 By Arthur Beay. Deputy.