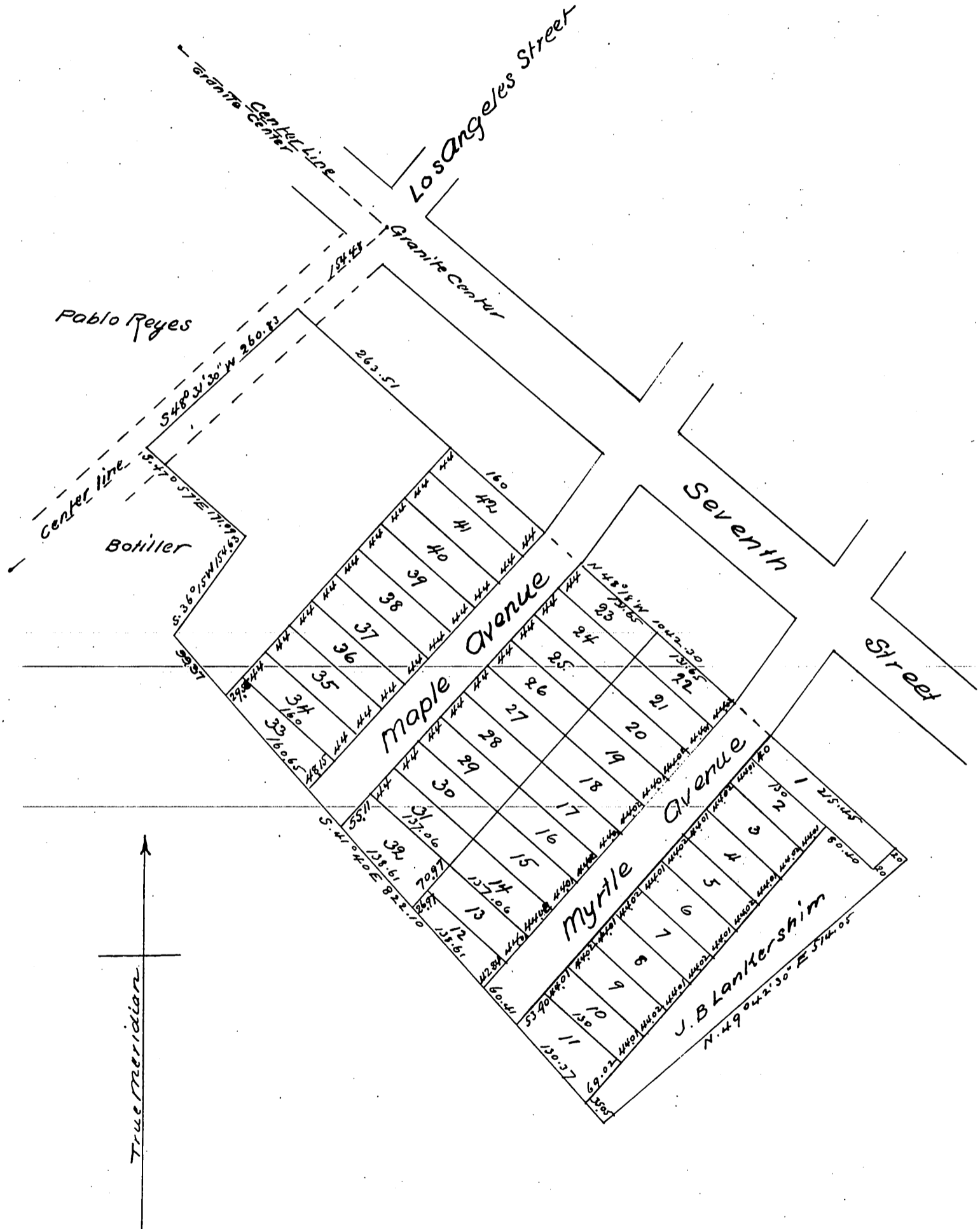


Map OF Maple Avenue Tract IN City of Los Angeles

the property of J. B. Lankershim
Subdivided Oct 1886 Fred Eaton C.E.



A full, true and correct copy of the original
(reduced to the scale of 150 feet to one inch)
recorded Oct 21st 1886 at 3⁴¹ PM at request
of J. B. Lankershim

Frank A. Gibson County Recorder
By Arthur Pray Deputy.