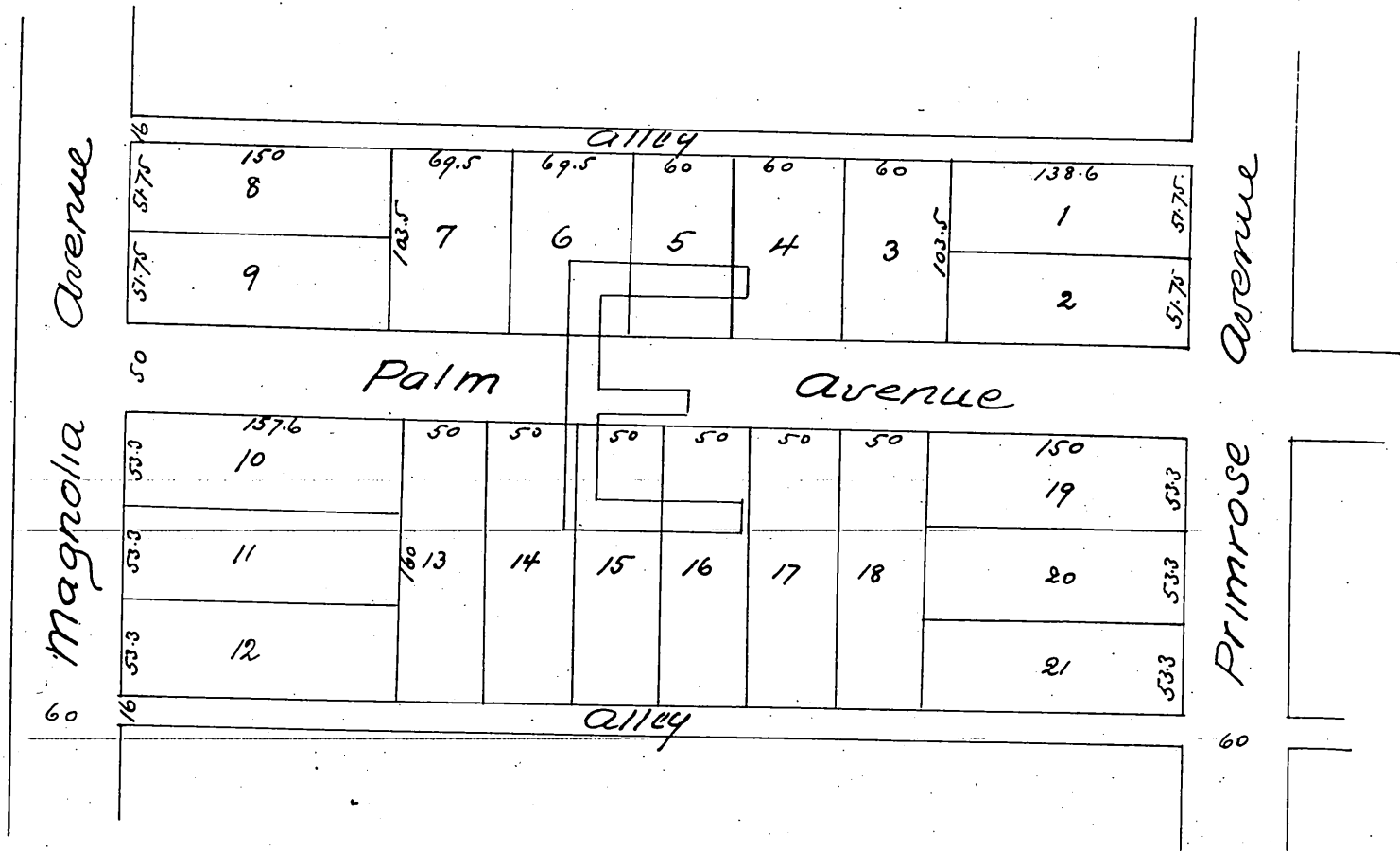


Stewart and Mulford's
Subdivision

of Lot E Block 3 Monrovia Tract
Los Angeles Co Calif

Scale 100 ft to 1 inch



Surveyed by
Flanagan & Quinton
Oct 21 1886

A full true and correct copy of the original
recorded Oct 23rd 1886 at 1st P.M. at request of.
S.P. Mulford
Frank A. Gibson County Recorder
By Arthur Bray Deputy