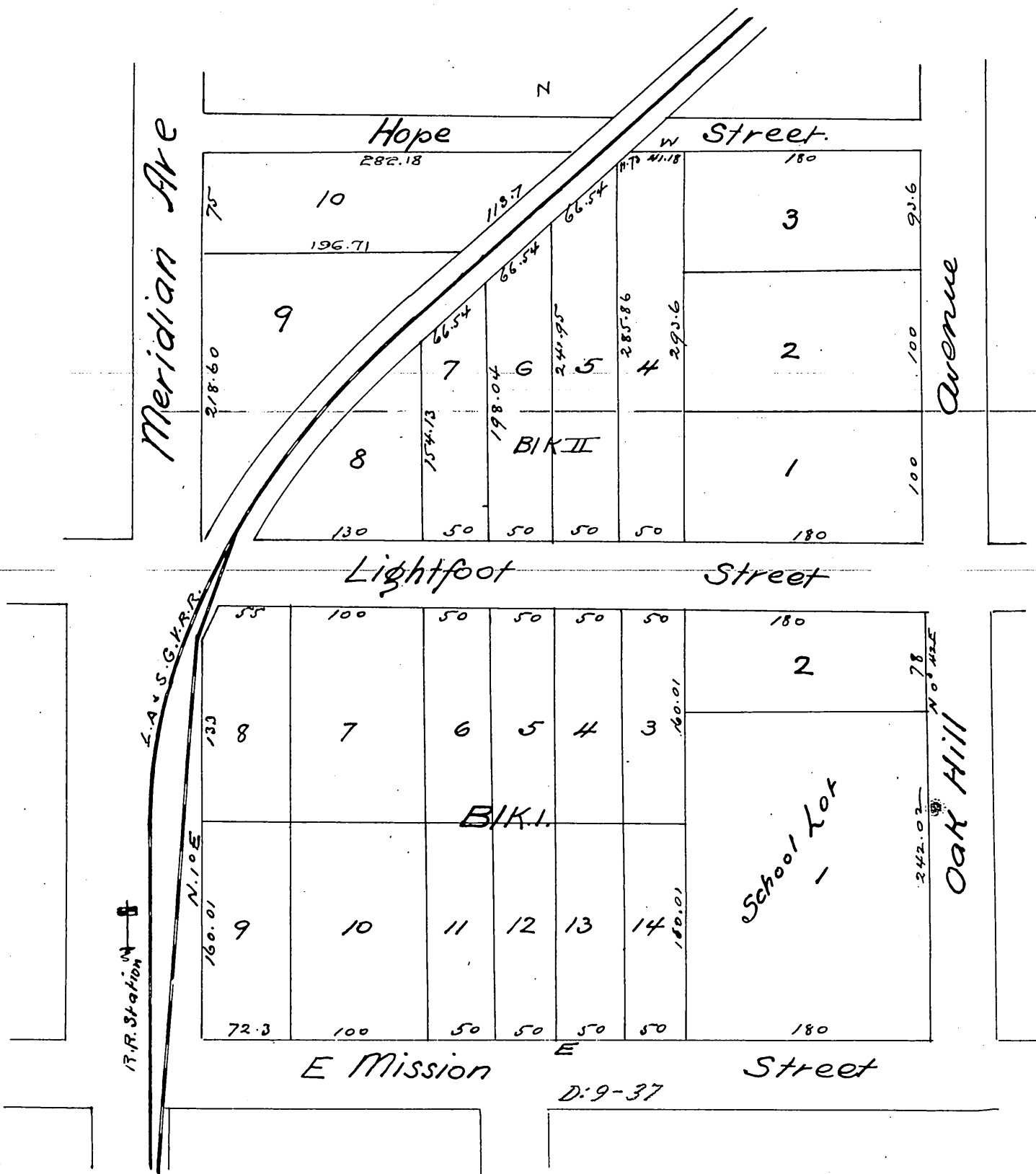


Re-Plat of the Town of South Pasadena

Los Angeles Co. California
property of George Lightfoot
Being the South 10 acres off of the West half of the Raab Tract
in the Rancho San Pasqual.
Williell Thomson Sur Aug 1886

100ft = 1 in



A full true and correct copy of the original recorded
October 28th 1886 12²² M at request of George Lightfoot

Frank A. Gibson County Recorder
By Arthur Bray Deputy