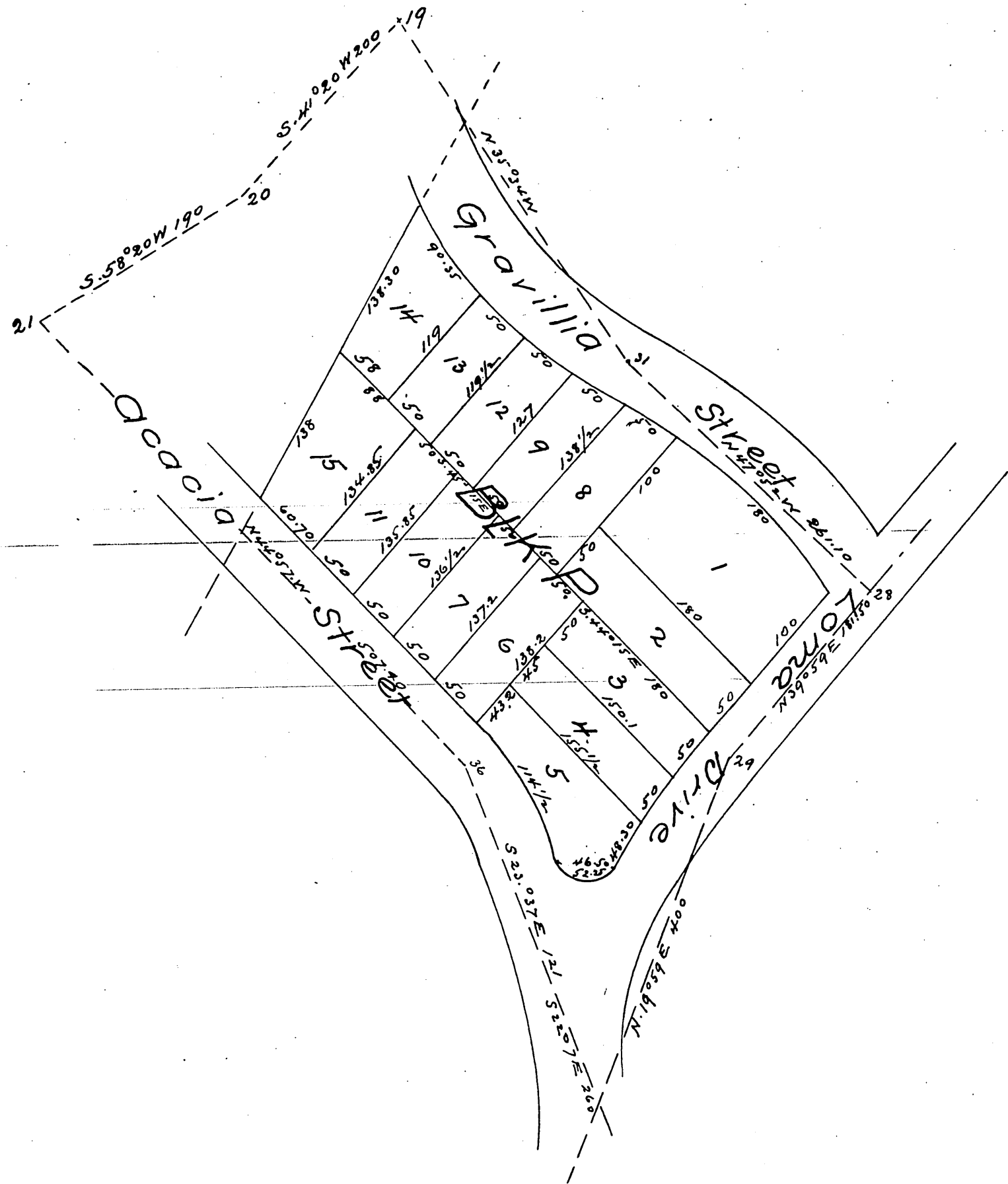


Map
 OF
 Mitchell's Subdivision
 of
 Block P of Colina Park
 in the City of Los Angeles Cal.

Subdivided in Sept 1886 by J.A Bernal Sur & C.E.

Scale 50 feet = 1 inch



A full, true and correct copy of the original
 (reduced to the scale of 100 feet to one inch)
 recorded Oct 29th 1886 at 1:38 P.M at request of
 a. Mitchell
 Frank A. Gibson County Recorder
 By Arthur Gray Deputy.