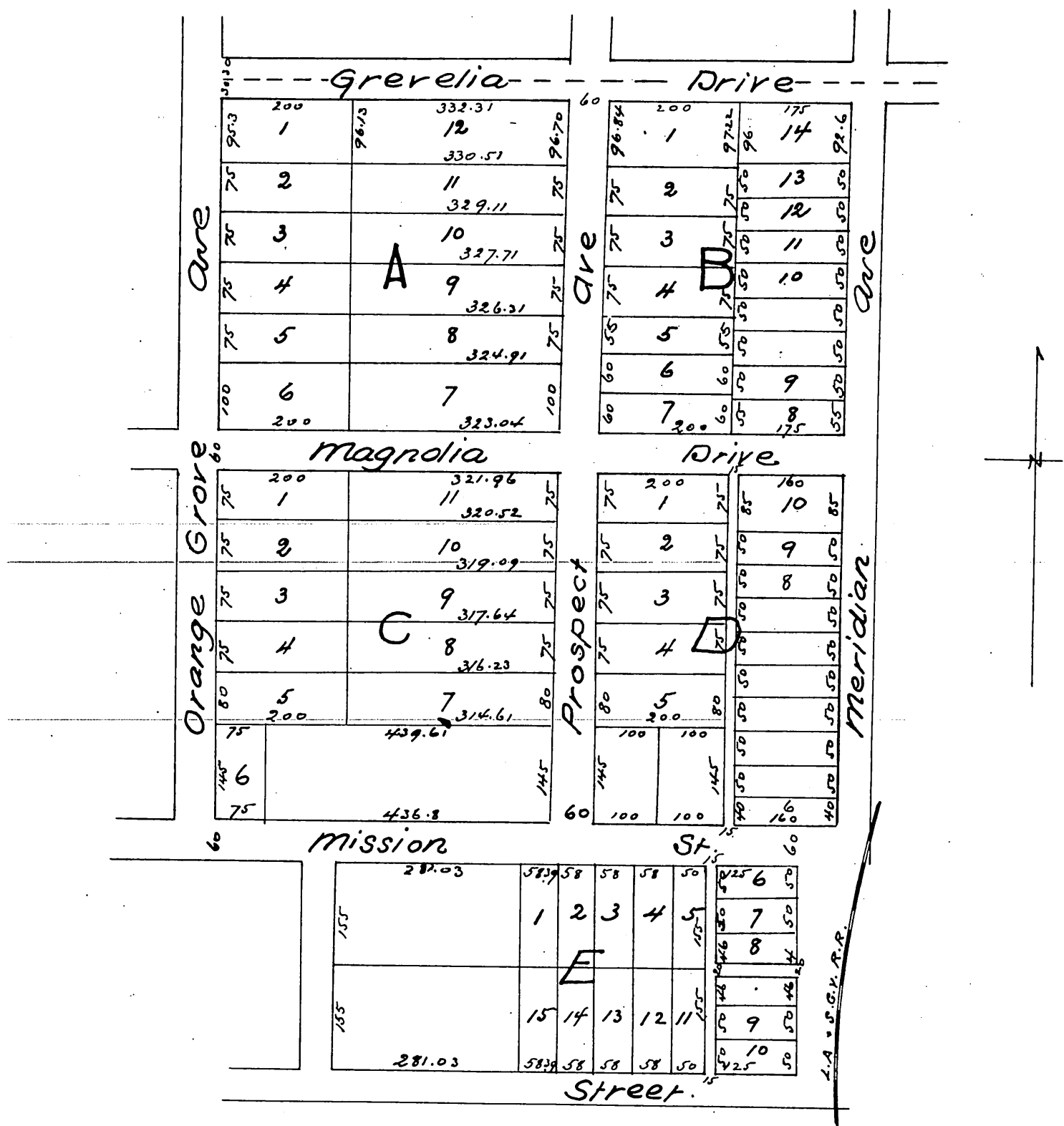


# Map of the Wotkyns & Martin Subdivision

Being part of Division G  
San Gabriel Orange Grove Assn.  
South Pasadena Cal  
Surveyed Oct 1886 by J.M. Willard C.E.  
Scale 100ft to one inch



A full, true and correct copy of the original  
(reduced to the scale of 200 feet to one inch)  
recorded Oct 30, 1886 at 11:27 AM at request of  
B.M. Wotkyns  
Frank A. Gibson County Recorder  
By Arthur Bray Deputy