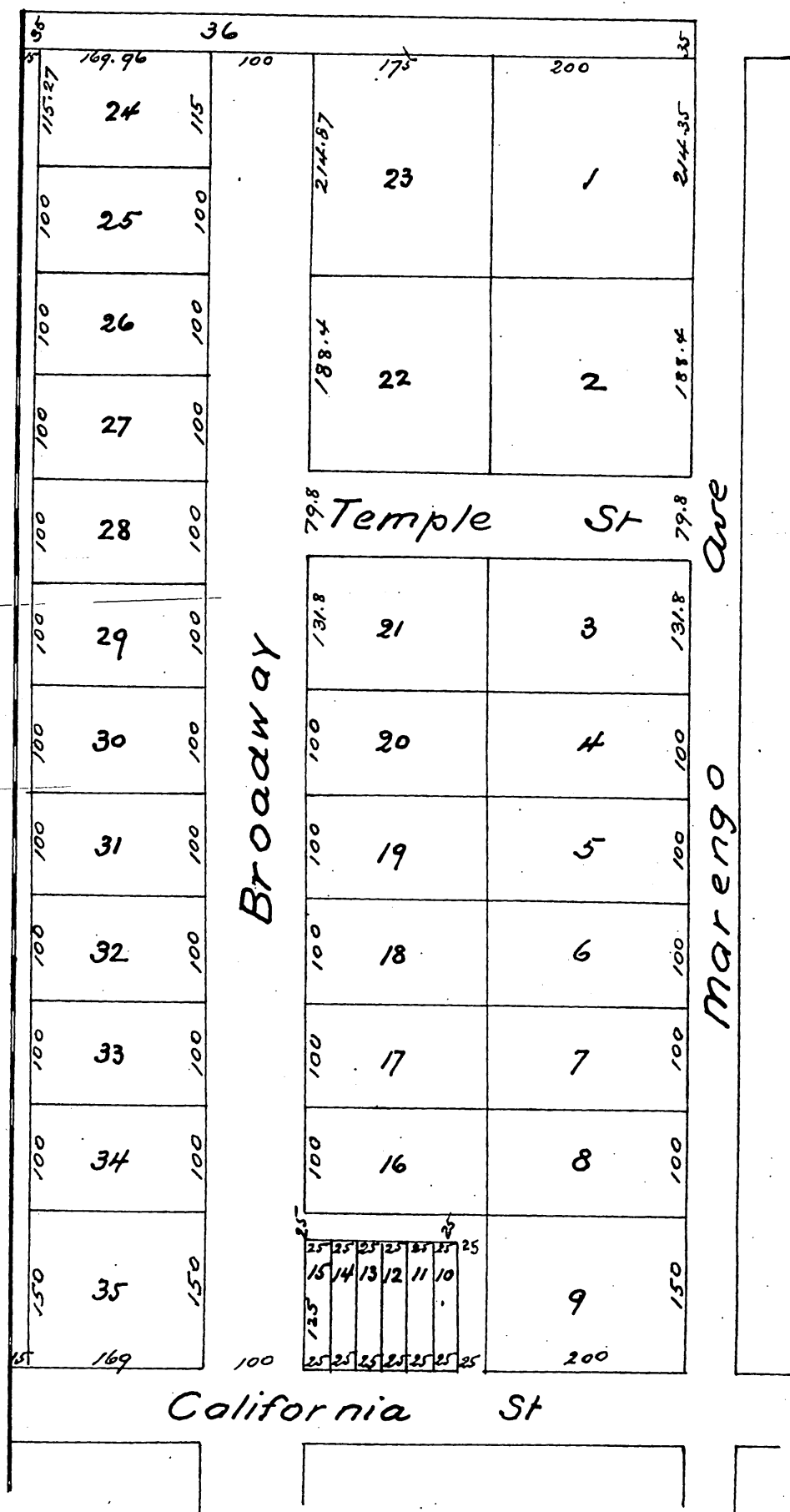


Map
of
Webster and Stratton's
Subdivision of the
G.T. Stamm Property
Lots 10 and 11 Block H of the San Pasqual Tract
of the lands of the Lake Vineyard Land and
Water Association Pasadena Cal
Surveyed July 1886 by J. M. Willard C. E.
Scale 100 ft to 1 inch



A full, true and correct copy of the original
 (reduced to the scale of 100 feet to one inch)
 recorded Nov. 4, 1886 at 2³⁰ PM at request of
 Samuel Stratton
 Frank A. Gibson County Recorder
 By Arthur Bray Deputy