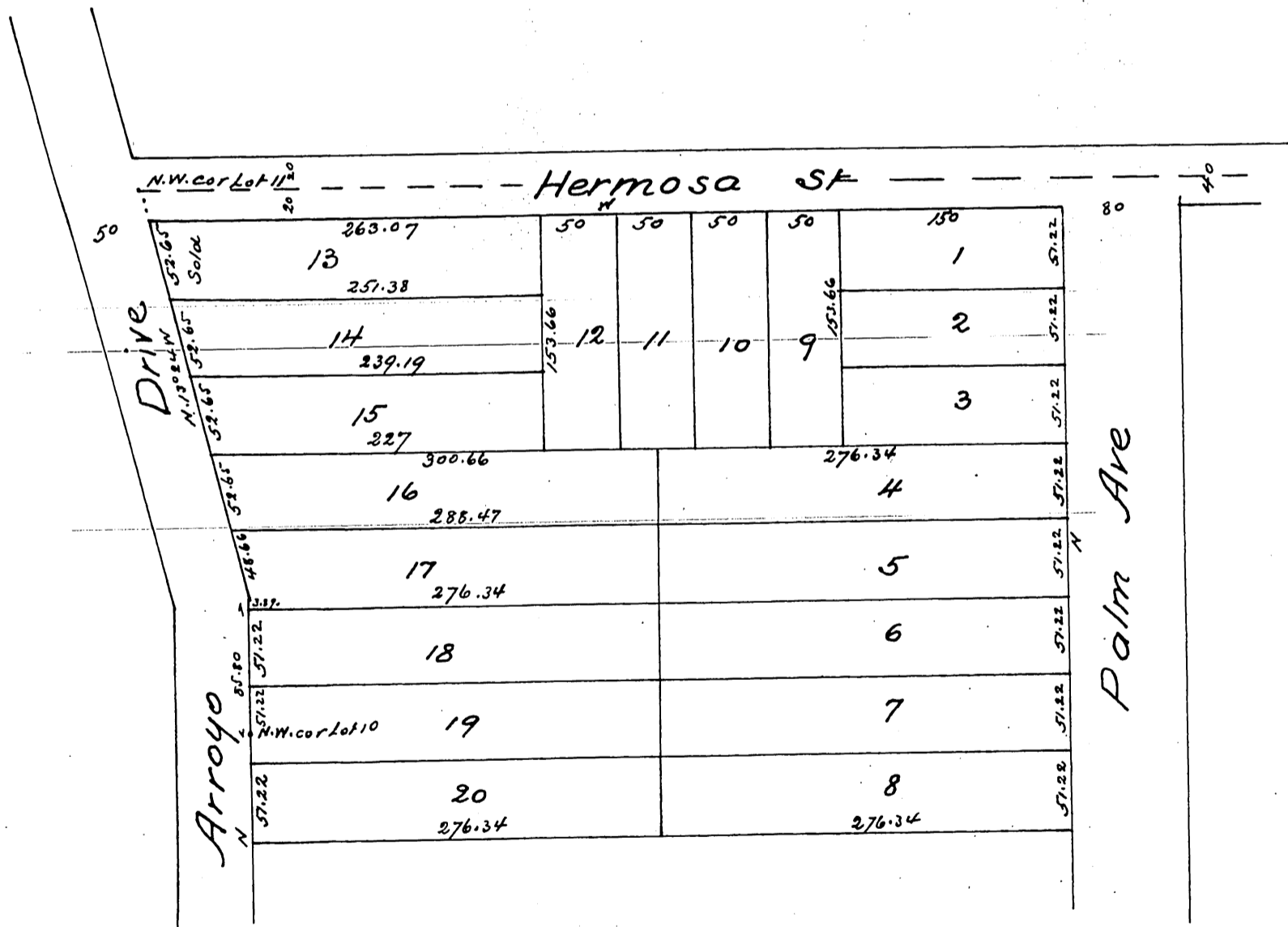


Plat
of
G.W. Glover's Subdivision

of a portion of
Lots 10 & 11 of the Subdivision of the Fletcher Tract
S.G.O. Asso as shown by map recorded in Book 4
Misc Records page 546 Records Los Angeles Co

Williell Thomson Sur June 1886

Scale 50 ft 1 in



A full true and correct copy of the original (reduced to
the scale of 100 feet to one inch) recorded November 4th 1886
at 2:52 PM at request of G.W. Glover
Frank A. Gibson County Recorder
By Arthur Bray Deputy.