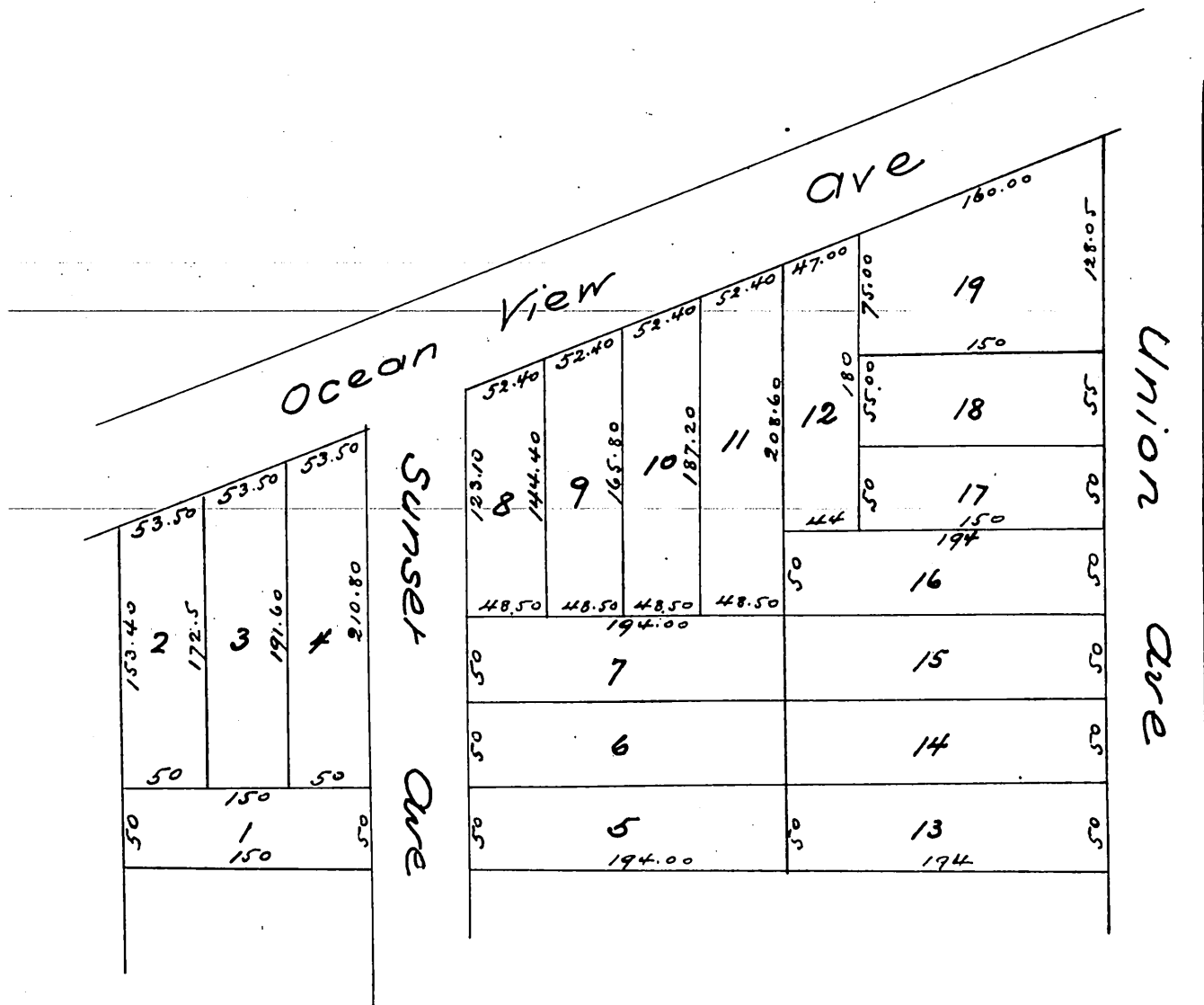


# Hays' Addition to the Sunset Tract

Being the Subdivision of Block 3 Yarnell Tract  
Scale 100 feet to one inch EG Jones C.E.



A full, true and correct copy of the original  
recorded Nov 5 1886 at 4-29 P.M. at request of  
B.S Hays

Frank A Gibson County Recorder  
By Arthur Bray Deputy