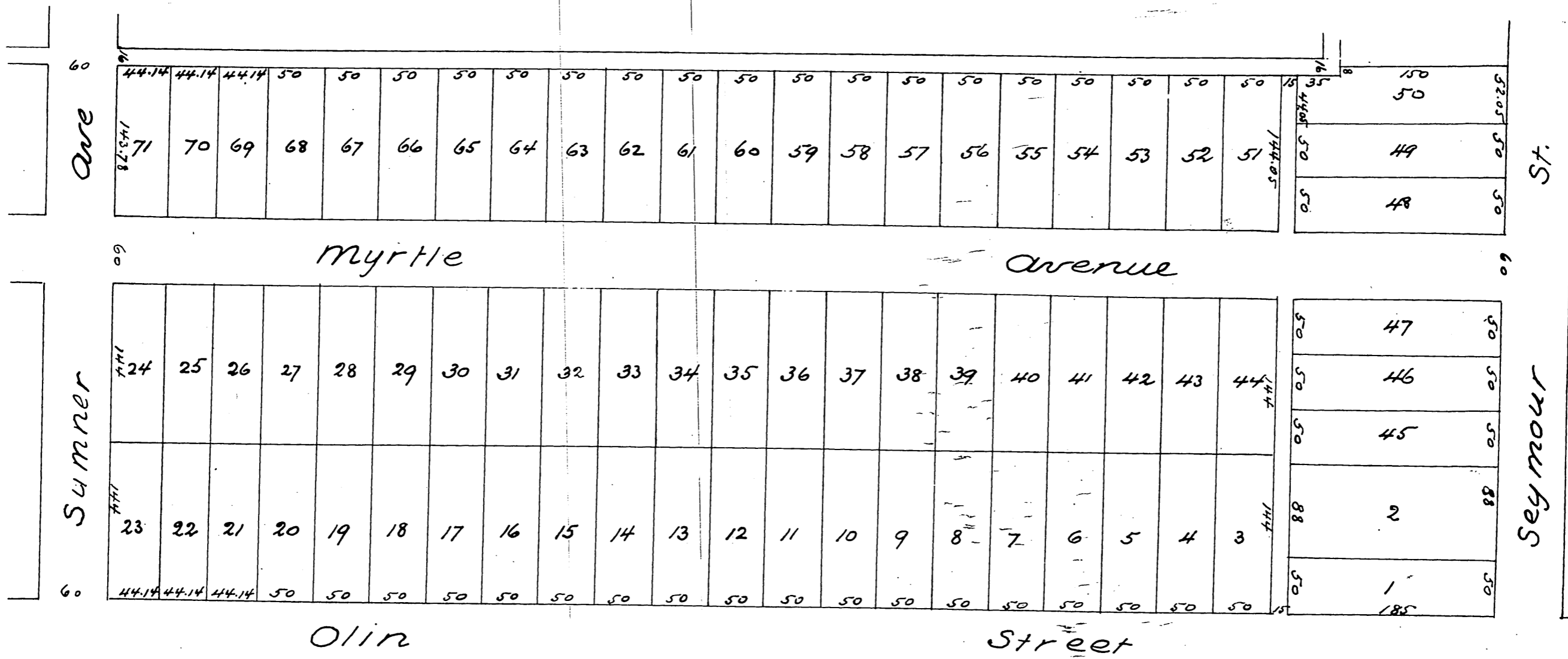


# Carter Grove Tract

a subdivision of part of the N.W. 1/4 of Sec 6 T.2S. R.13W. S.B.M.

Scale 100 feet to one inch E.G Jones C.E.



A full, true and correct copy of the original  
 recorded Nov 6 1886 at 10<sup>26</sup> A.M. at request  
 of Jas. R. Boal.  
 Frank A. Gibson County Recorder  
 By Arthur Bray Deputy

