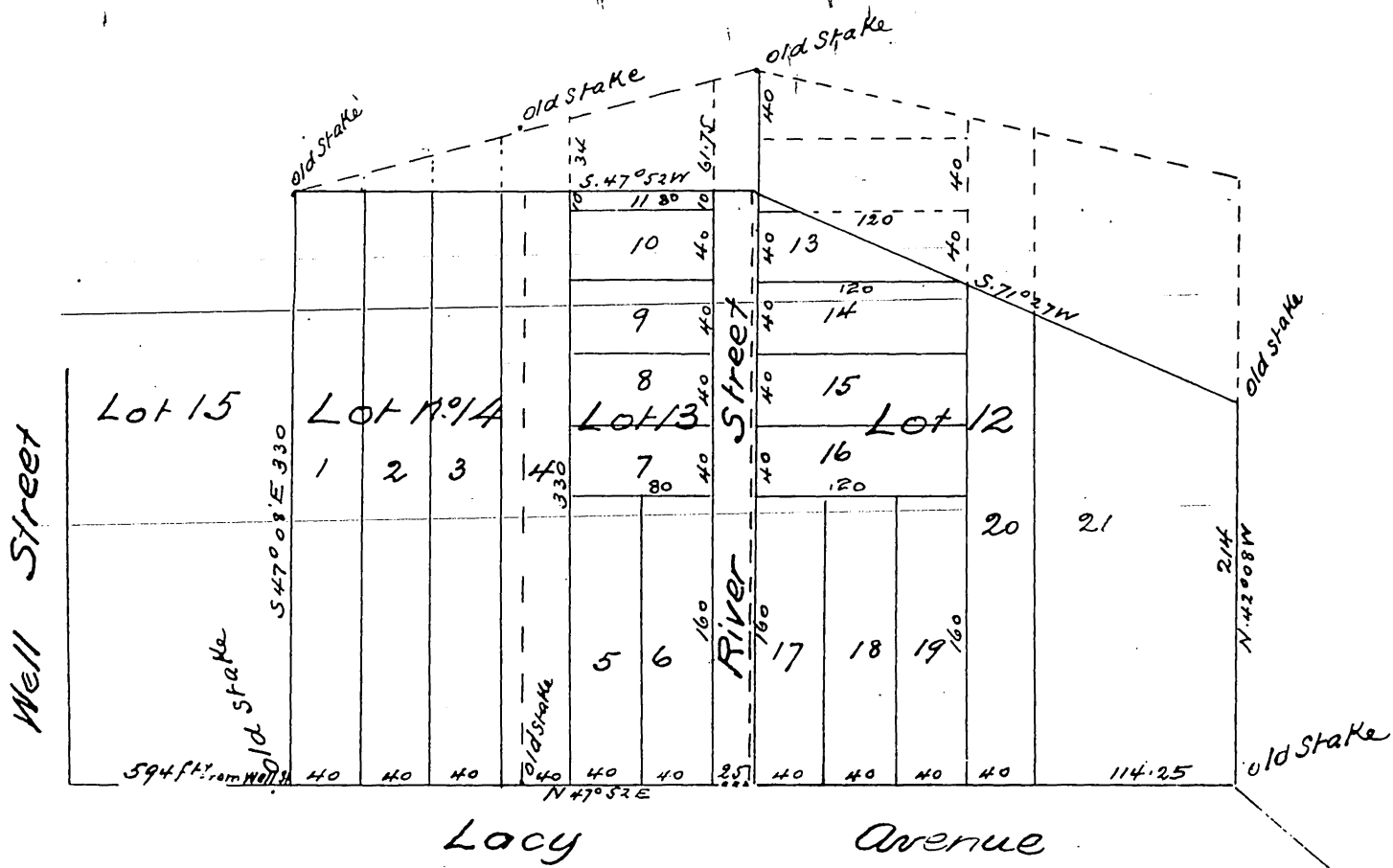


Map  
 showing the subdivision of  
 Lots 12 13 and 14  
 Griffins Addition to East Los Angeles  
 J. E. Jackson Survey June 1884  
 Subdivided in July 1886 by J. A. Bernal Surveyor  
 Scale 50 ft to an inch



A full true and correct copy of the original (reduced to the  
 scale of 100 feet to the inch) recorded Nov. 8<sup>th</sup> 1886 at 20  
 min past 10 a.m. at request of E. M. A. Morgan  
 Frank A. Gibson County Recorder  
 By A. J. Aveill. Deputy