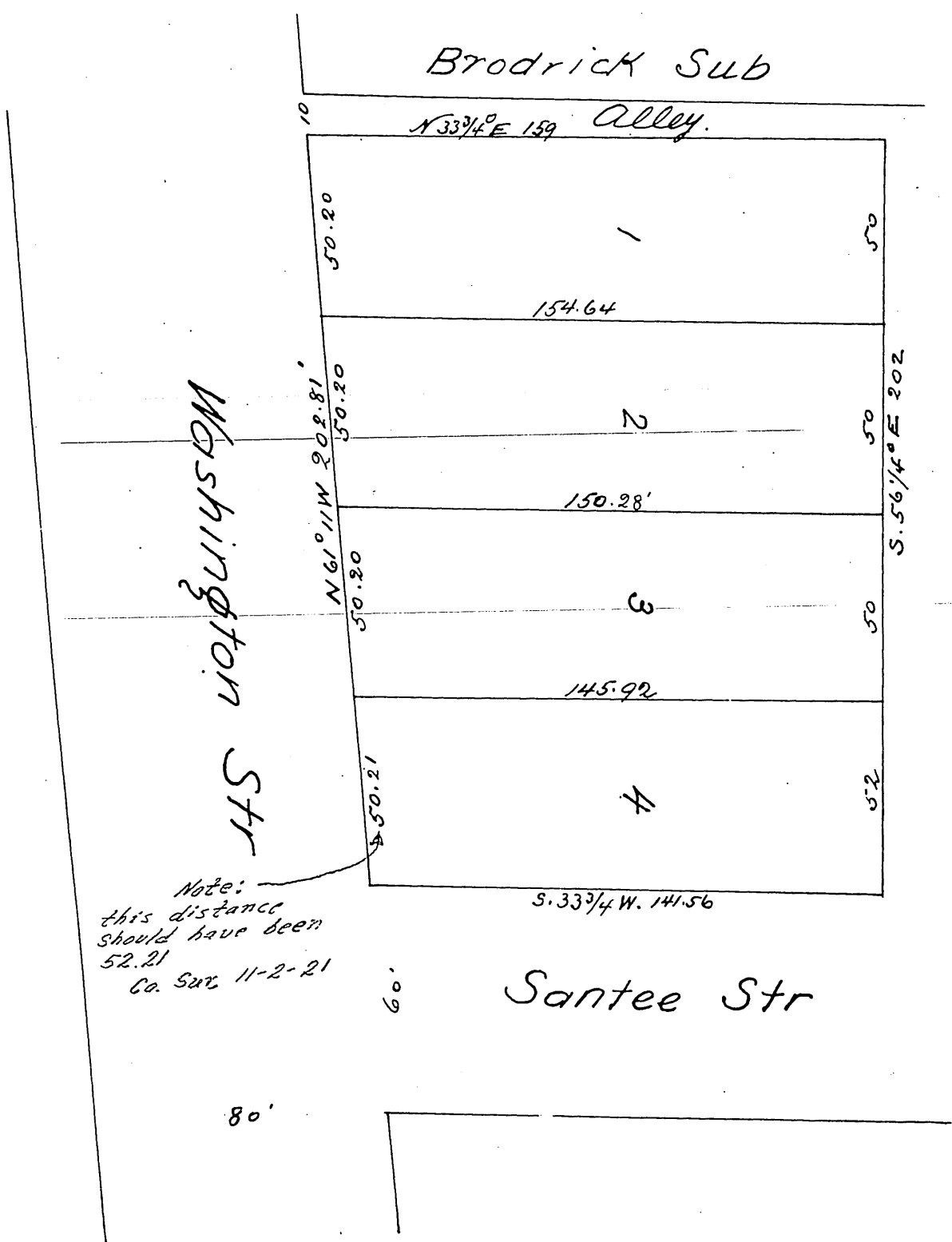


Map of Subdivision No 2 of

A tract of land conveyed by Josefa A de Celis to Fernando de Celis
by deed recorded in Book 145 page 212 of Los Angeles records
Situate in the City of Los Angeles California

Scale of one inch to 40 feet

Note The South West corner of this Subdivision is 500 feet East of the North East
corner of the crossing of Washington and South Main Streets



Note:
this distance
should have been
52.21
Co. Sur 11-2-21

A full true and correct copy of the original recorded Nov 8th
1886 at 3²⁰ PM at request of F de Celis
Frank A Gibson County Recorder
By Arthur Bray Deputy