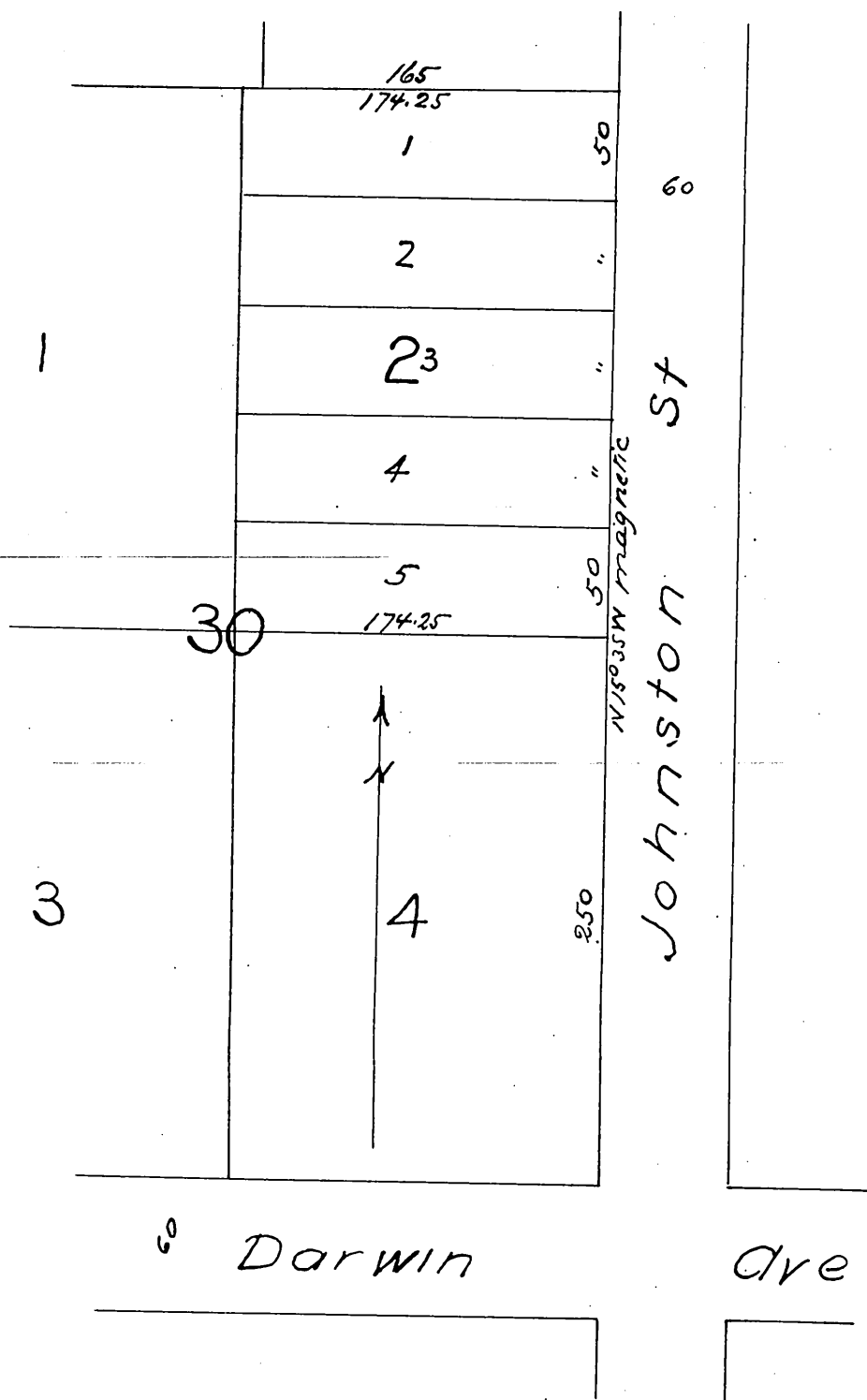


Map  
 of  
 Eames' Subdivision  
 of Lot 2 Block 30  
 Terminus Homestead Tract  
 Surveyed Nov 1886 by W. F. McClure  
 Scale 50ft=1 in



A full, true and correct copy of the original  
 (reduced to the scale of 80 feet to one inch)  
 recorded Nov. 10 1886 at 10<sup>1</sup>/<sub>2</sub> a.m. at request  
 of N. Eames  
 Frank A. Gibson County Recorder  
 By Arthur Bray Deputy.