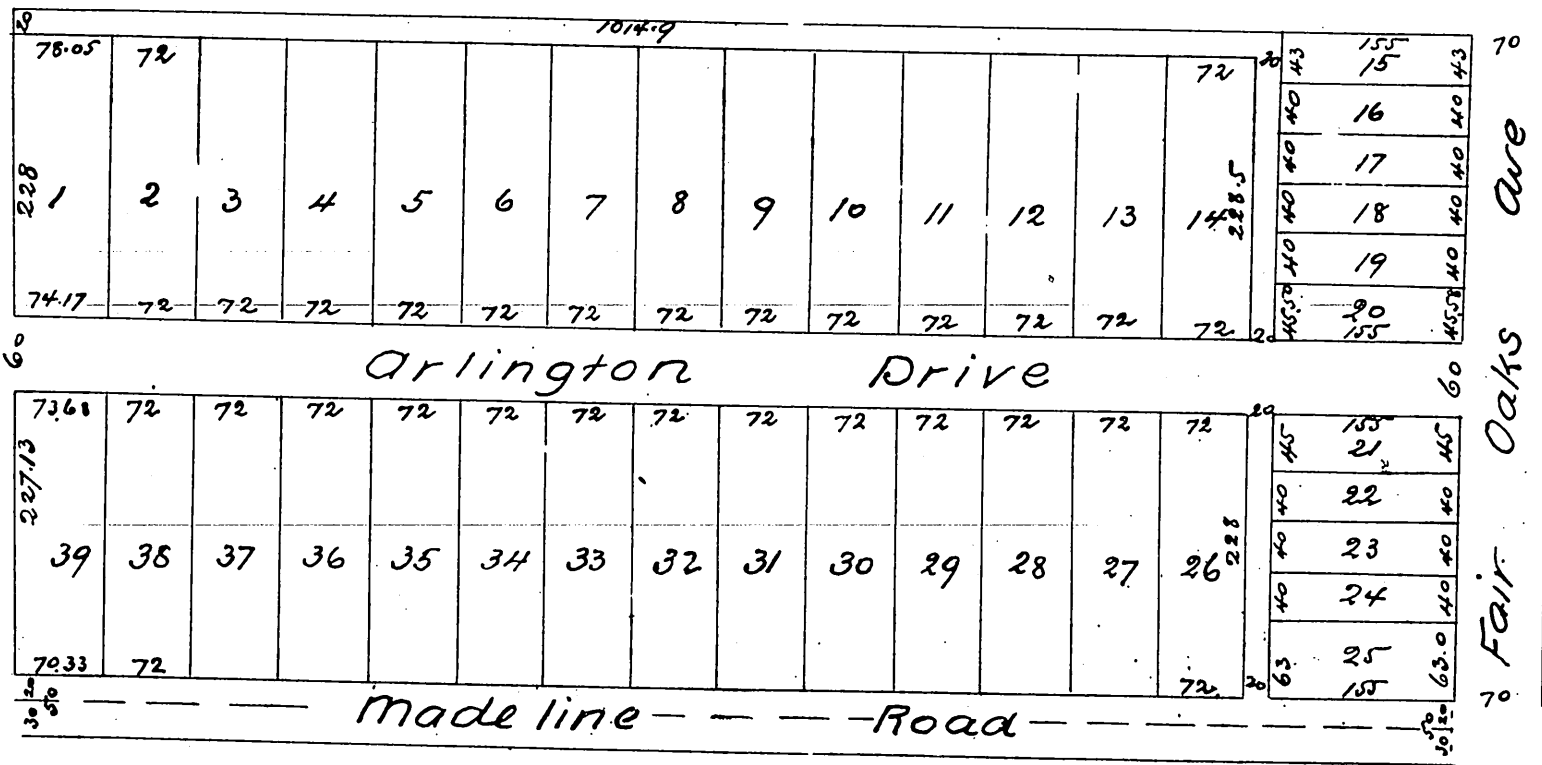


Map
OF
Genl Edwin Ward's Subdivision
of the East half of land marked "Hutton" Division
of the Lands of the San Gabriel Orange Grove
Association Pasadena Cal.

Surveyed October 1886 by J.M. Willard C.E.
Scale 60 ft to one inch



A full, true and correct copy of the original
(reduced to the scale of 150 feet to one inch)
recorded Nov. 10 1886 at 2:28 P.M. at request of
Gen Edwin Ward
Frank A. Gibson County Recorder
By Arthur Bray. Deputy