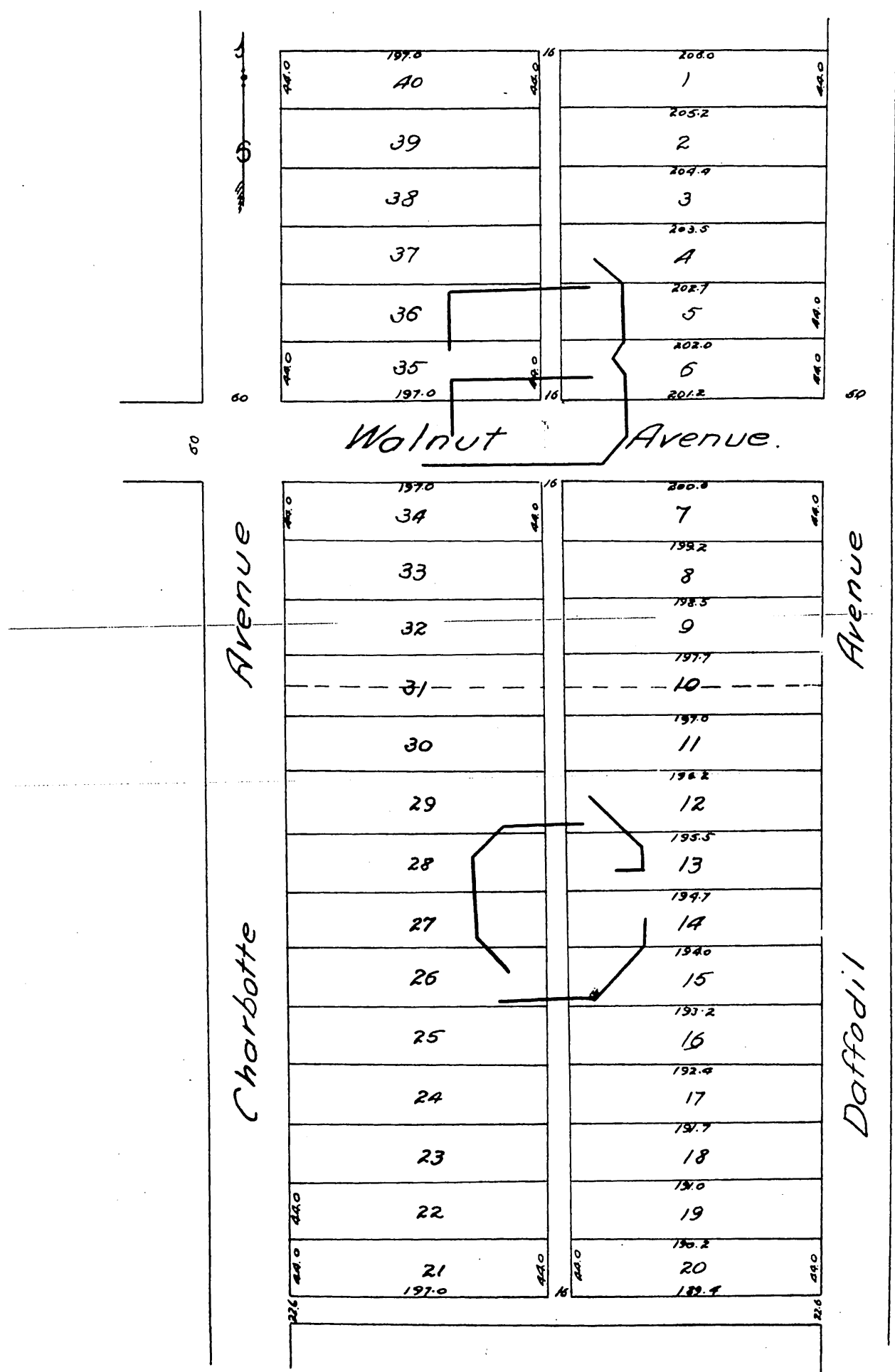




Wardall Subdivision  
 OF  
 Lots B & C Block 9 Monrovia Tract  
 Los Angeles Co Cal.

Scale 100ft. to 1 in.



Surveyed by Flanagan & Quinton Nov-1886.

A full true and correct copy of the original recorded Nov. 11<sup>th</sup> 1886 at 51 min. past 2 P.M. at request of Thomas Wardall.

Frank Clibson County Recorder.  
By N. S. Averill Deputy.