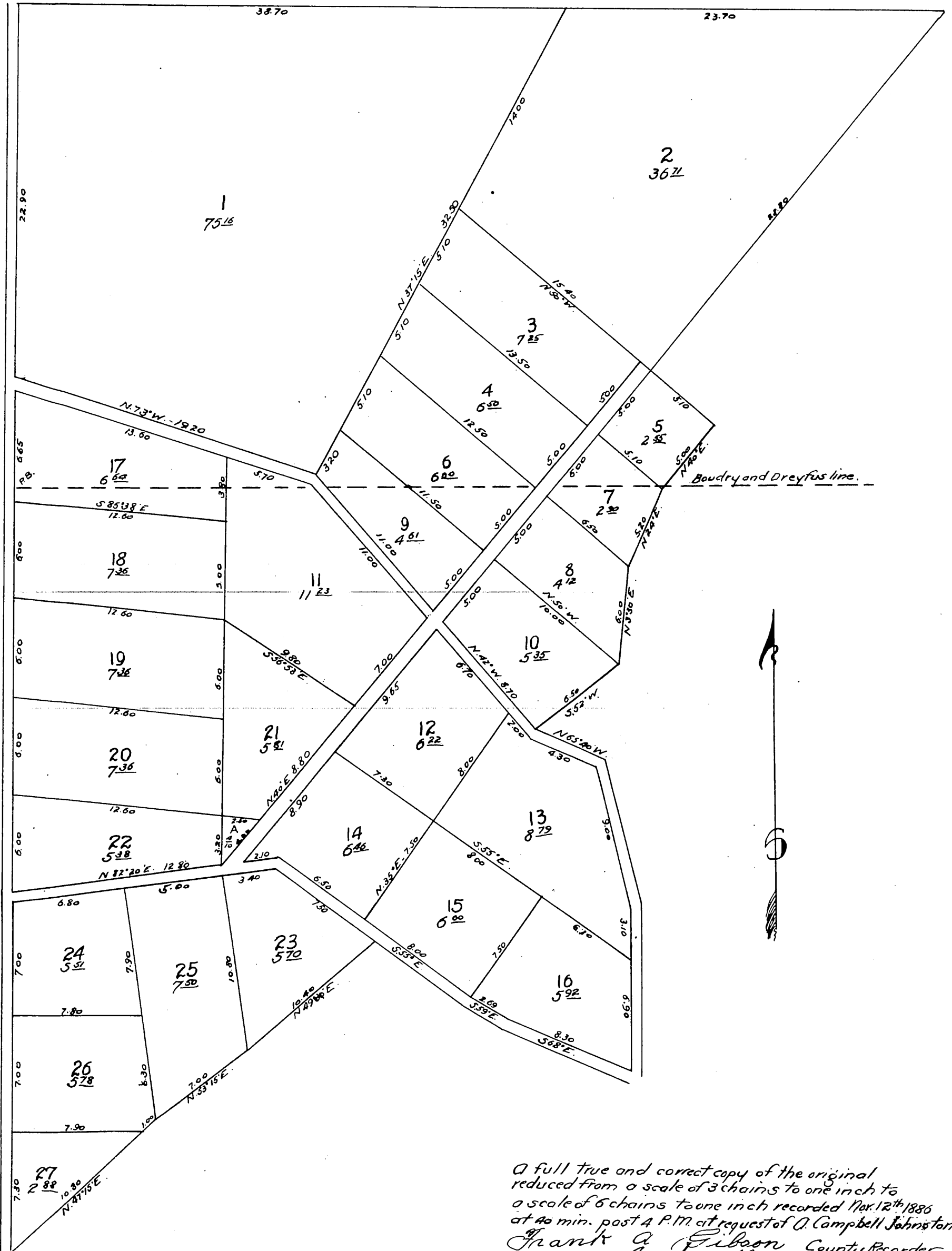


# Rockdale.

being A.C. Johnston's subdivision of a portion of the  
Rancho San Rafael.  
Situate in Los Angeles Co. California.

Scale 3 chains to One Inch.  
Surveyed by Ferraise Purcell B.C.E.



A full true and correct copy of the original  
reduced from a scale of 3 chains to one inch to  
a scale of 6 chains to one inch recorded Nov. 12<sup>th</sup> 1886  
at 40 min. past 4 P.M. at request of O. Campbell Johnston.  
Frank A. Gibson County Recorder.  
By Arthur Bray Deputy.