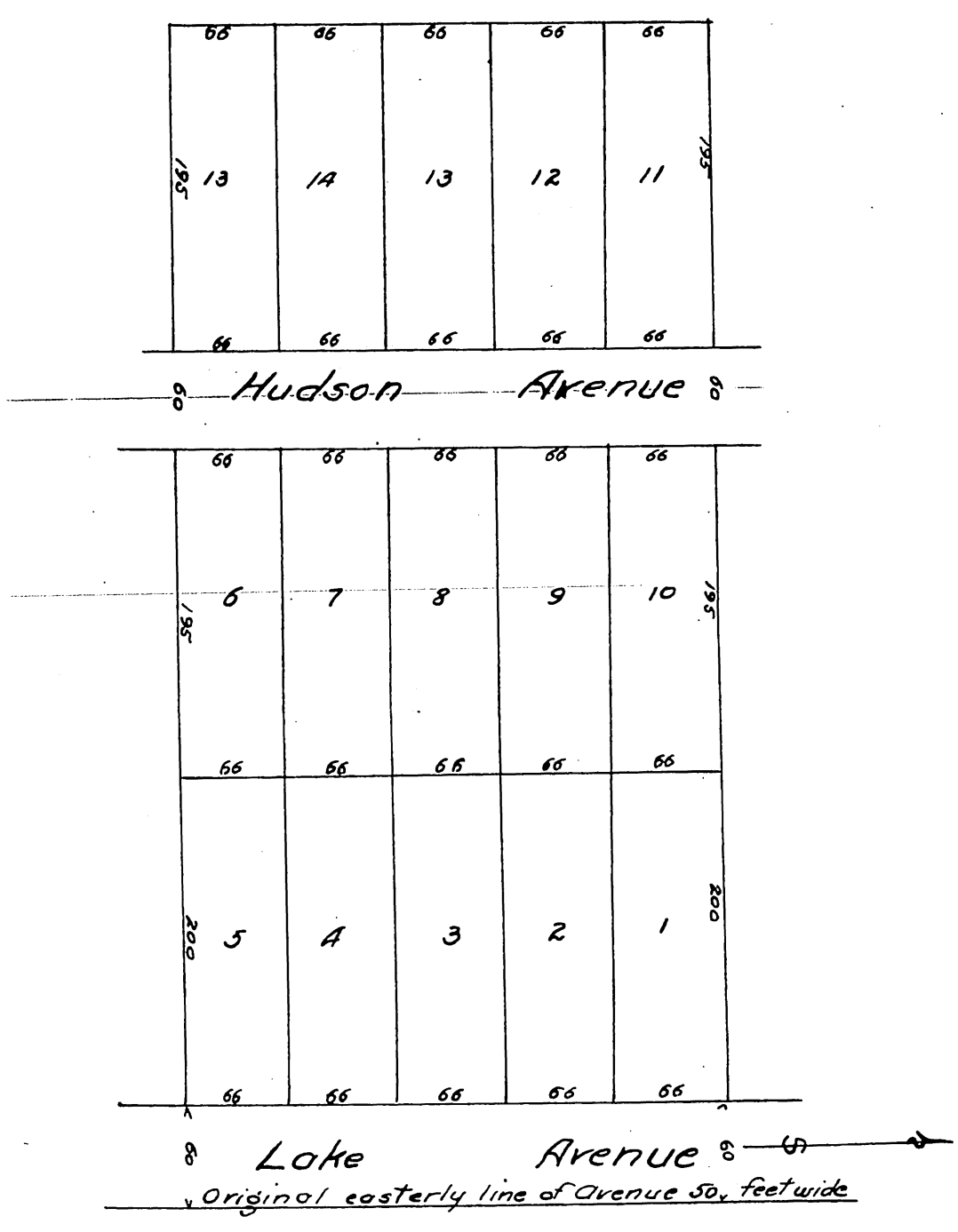


*Miller & Axford's*  
*Subdivision*  
 of  
*South Half of Lot 7 Block K, San Pasqual Tract,*  
*City of Pasadena, Cal.*  
*Nov. 13<sup>th</sup> 1886 Wm W. Mills*  
*Surveyor.*

Scale 50 feet one inch.  
 (Reduced one half)



*A full true and correct copy of the original (reduced to scale of 100 feet to one inch, recorded Nov. 16<sup>th</sup> 1886 at 35 Min. past 12 M. at request of H. J. Axford.*  
*Frank Alibson County Recorder.*  
*By A. S. Averill. Deputy*