

1011

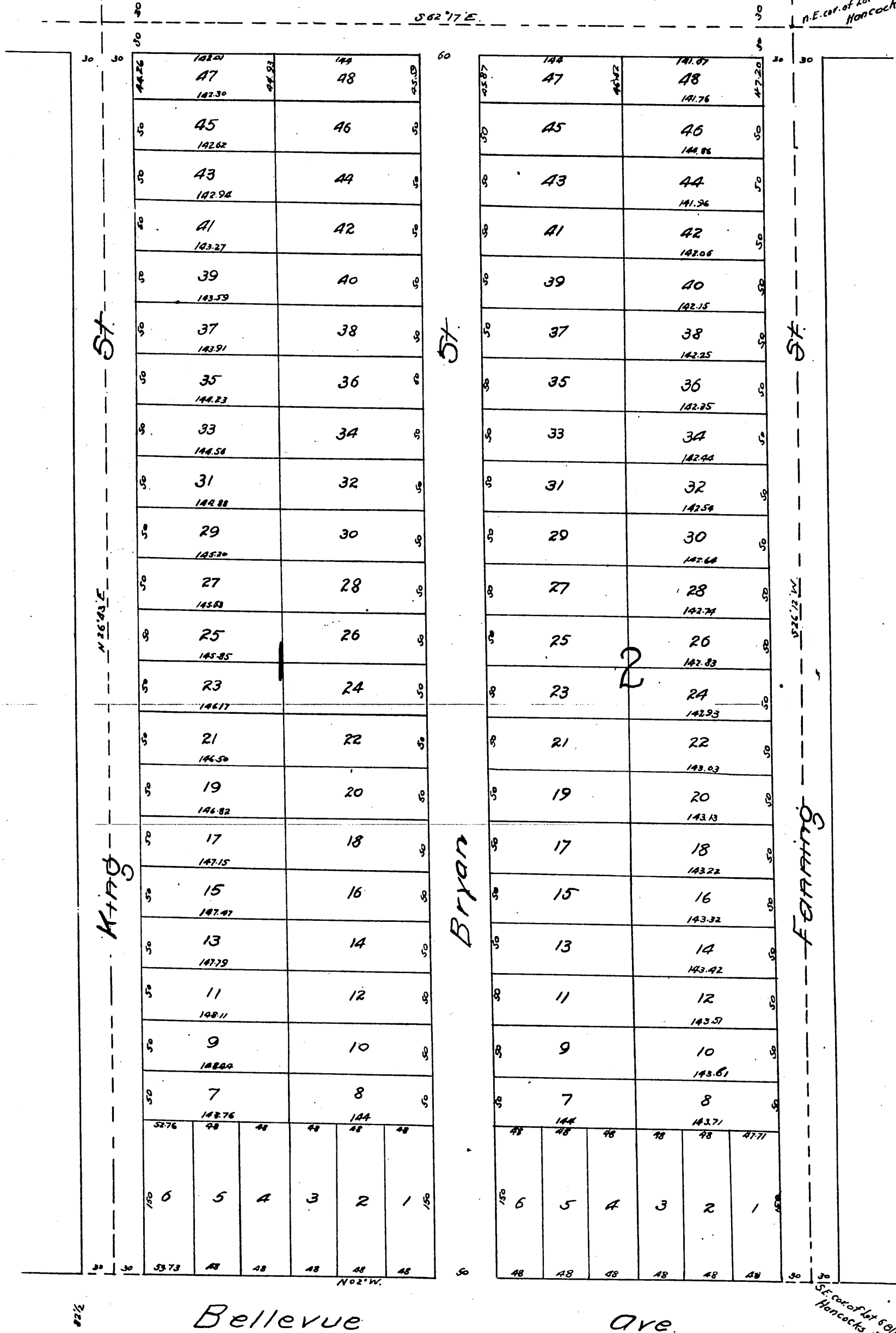
# Map of Bryan's Subdivision

of the Easterly 20 acres of Lot 6 Block 28  
Hancock's Survey, Los Angeles City Cal.

Surveyed Nov. 1886 by E. T. Wright.

Scale 100ft. to one inch.

N.E. cor. of Lot 6 Block 28  
Hancock's Survey.



A full, true and correct copy of the original  
recorded Nov. 17<sup>th</sup> 1886 at 14 min. past 11 A.M.

at request of A. S. Bryan

Frank A. Gibson

By Arthur Bray

County Recorder.

Deputy.