

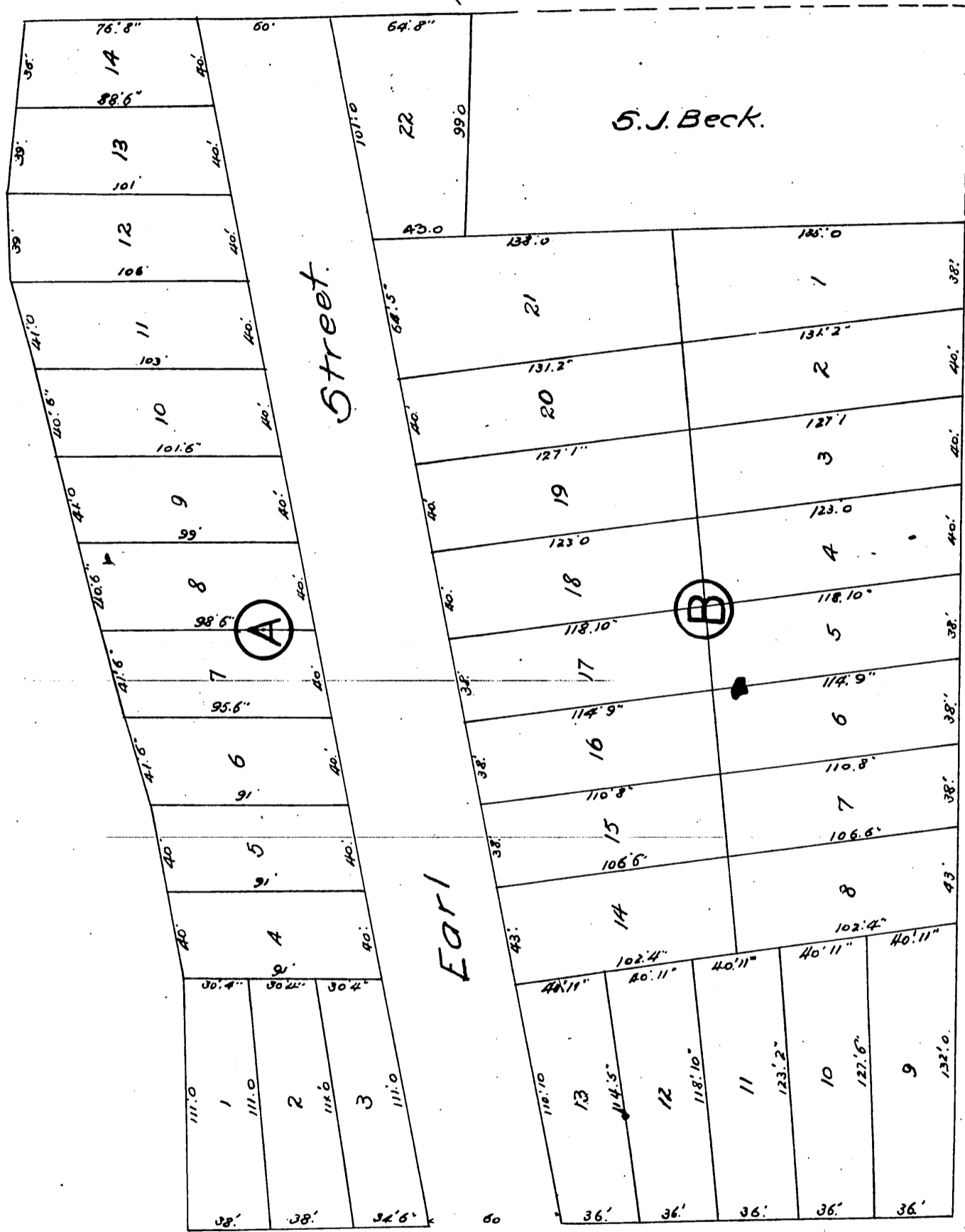
Beck Tract

being that portion of the S.J. Beck City property N.E. of Seventh Street.

Scale 30ft to 1 inch.

Surveyed by Gervaise Purcell B.O.C.E.

A.M. Bullis



Seventh St.

San Pedro St.

A full true and correct copy of the original, reduced from a scale of 30 feet to one inch to a scale of 60 feet to one inch recorded Nov. 17th 1886 at 50 min. past 2 P.M. at request of S.J. Beck.

Frank A. Gibson
By Arthur Gray

County Recorder
Deputy.