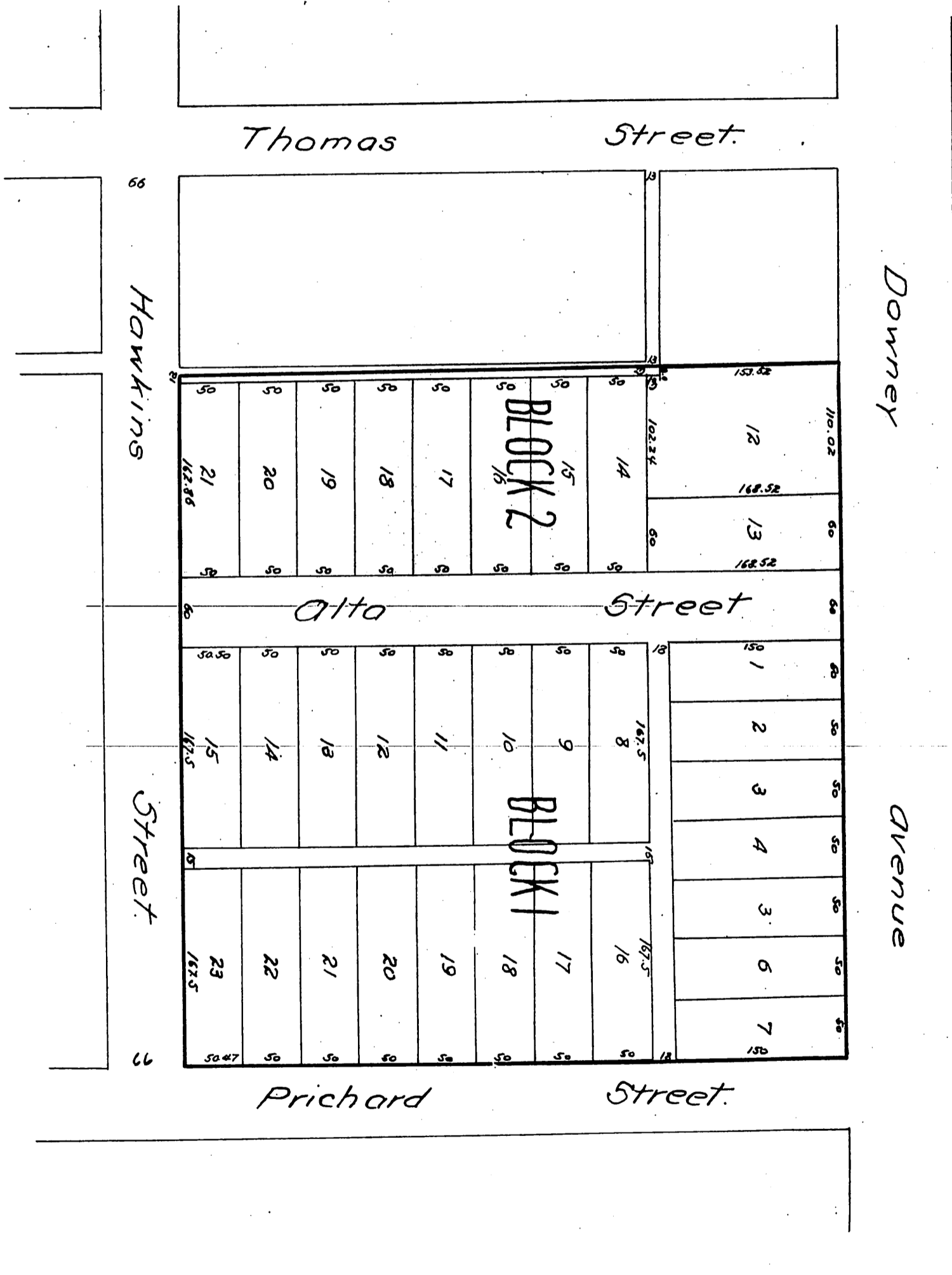


Map of Prichard Tract Los Angeles, Cal.

Scale 60' = 1 inch.

Surveyed Nov. 10th by Fred Eaton C.E.
1886



A full true and correct copy of the original reduced from a scale of 60 feet to one inch to a scale of 100 feet to one inch recorded Nov. 17th 1886 at 9 min past 4 P.M. at request of Los Angeles Land Bureau.

Frank A. Gibson County Recorder.
By Arthur Bray Deputy.