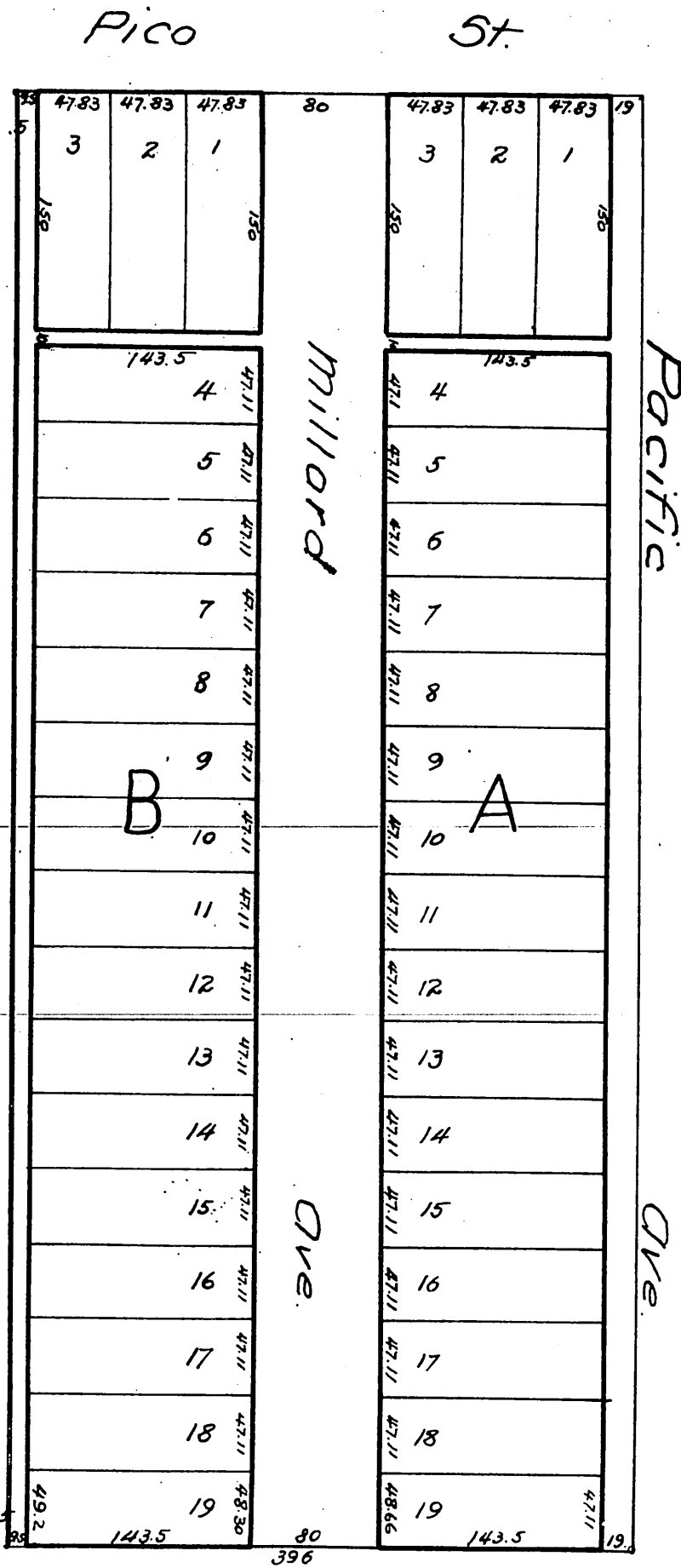


Millard Tract

Surveyed and Subdivided by Frank
 D. Lanterman according to description given in
 Deed Recorded in Book 121 Page 356. of Deeds
 of Los Angeles Co Records.
 November 1886



A full true and correct copy of the original
 reduced from a scale of 50 feet to one inch to a
 scale of 100 feet to inch recorded Nov. 18th 1886 at
 14 min. past 11 O. M. at request of S. R. Millard
 Frank A. Gibson County Recorder.
 By Arthur Bray Deputy. 12