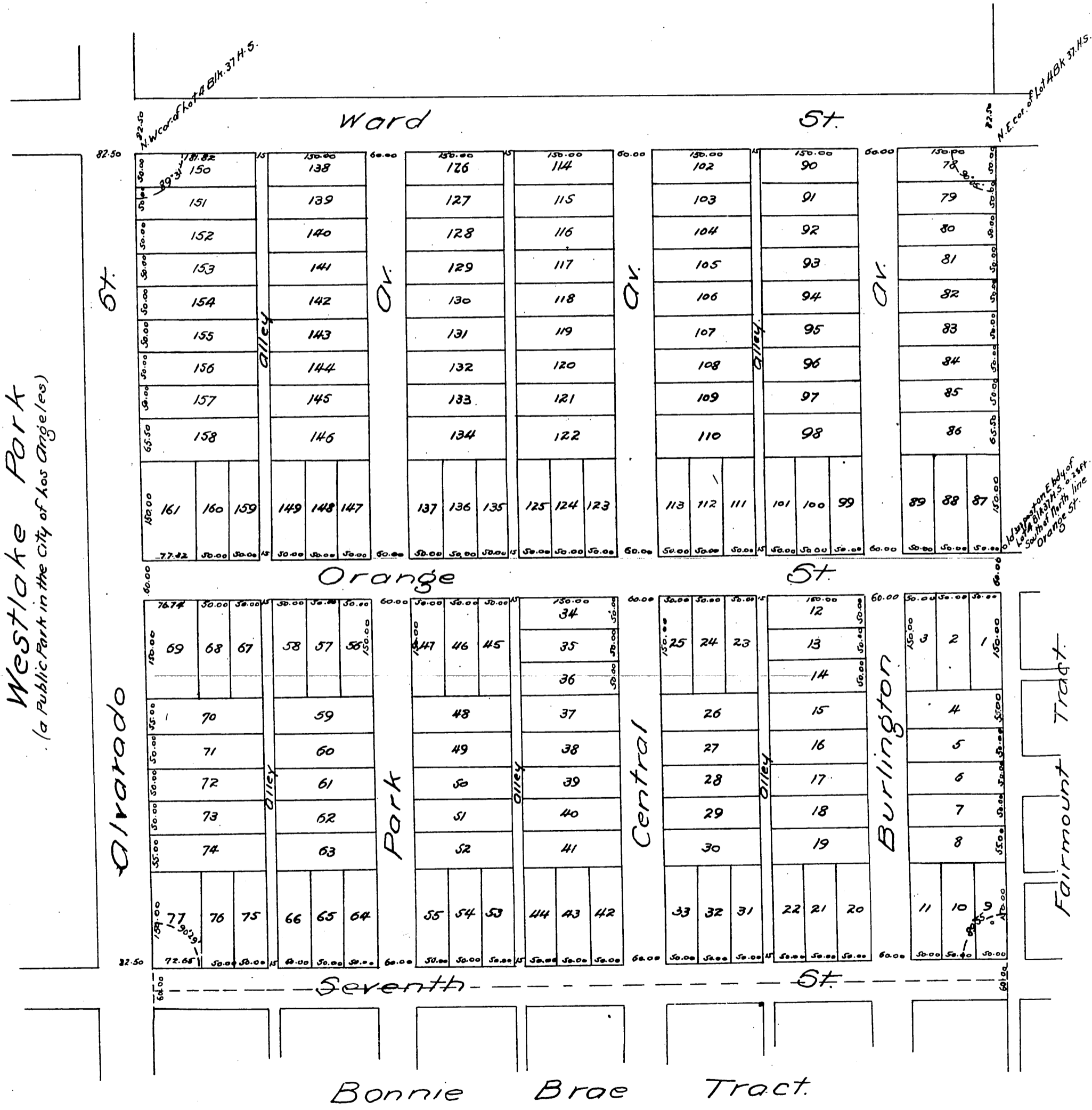


Map
of the
Westlake Park Tract
in the
City of Los Angeles.
subdivided.

at the request of S.C. Hubbell and Forrester.
Bros. in Nov. 1886, by Geo. C. Knox.

Scale - 150 ft. to one inch.



Westlake Park
(a Public Park in the City of Los Angeles)

note
The Westlake Park Tract comprises the whole of lot 4 Block 37 Hancock's survey of 35 acre donation lots in the City of Los Angeles, and is a subdivision thereof.

A full true and correct copy of the original recorded Nov 19th 1886 at 48 min. past 3 P.M. at request of S.C. Hubbell and Forrester Bros.
Frank A. Gibson County Recorder,
By Arthur Bray deputy. 12