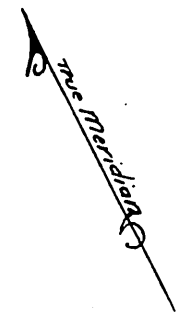
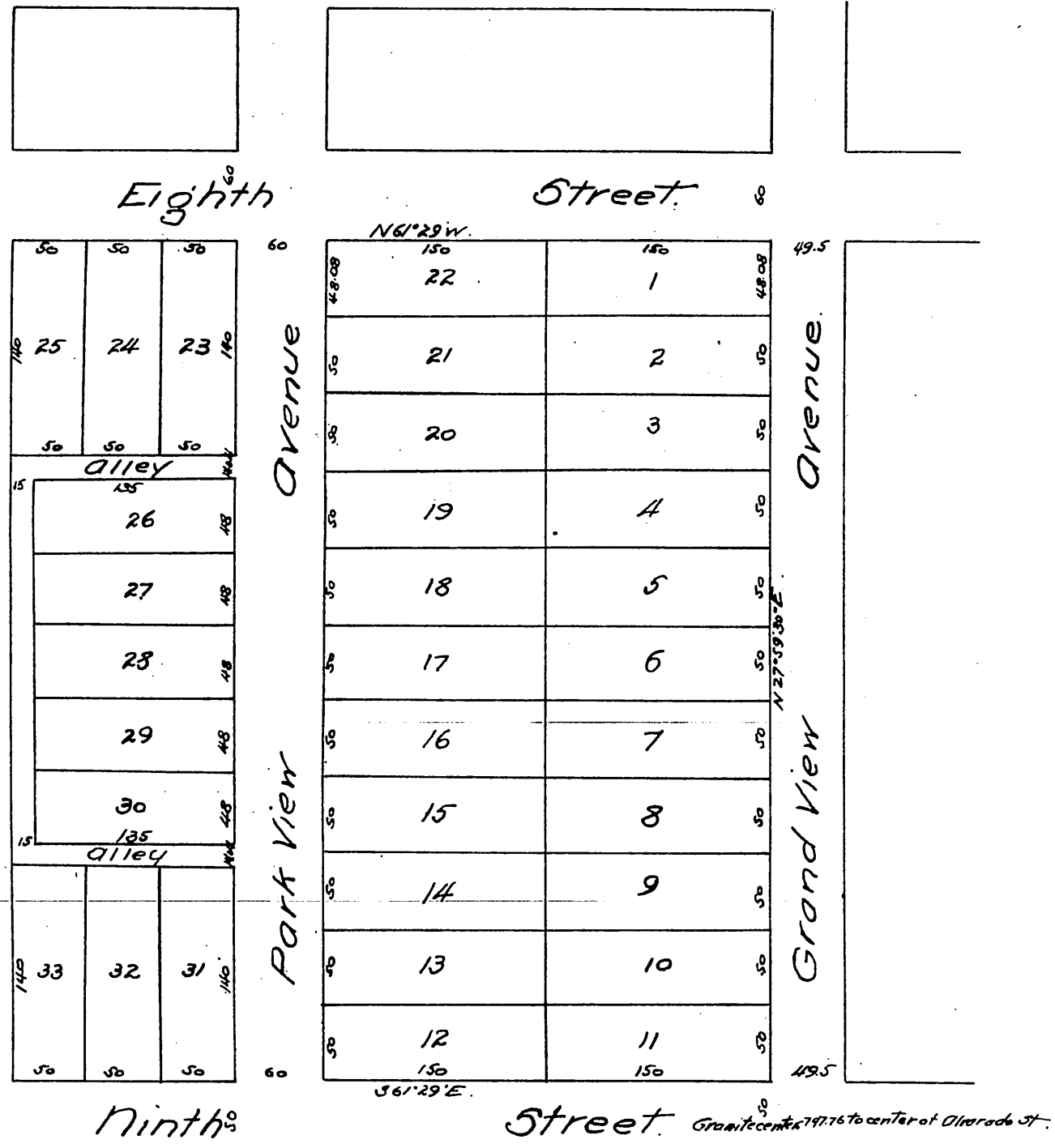


Map
of
Monterey Tract
Los Angeles Cal.
Surveyed by Fred Eaton Nov. 1886.



A full, true and correct copy of the original reduced from a scale of 60 feet to one inch to a scale of 100 feet to inch recorded Nov. 20th 1886 at 25 min. past 1 P.M. at request of Prews & Schumacher.
 Frank A. Gibson County Recorder.
 By Arthur Bray Deputy.