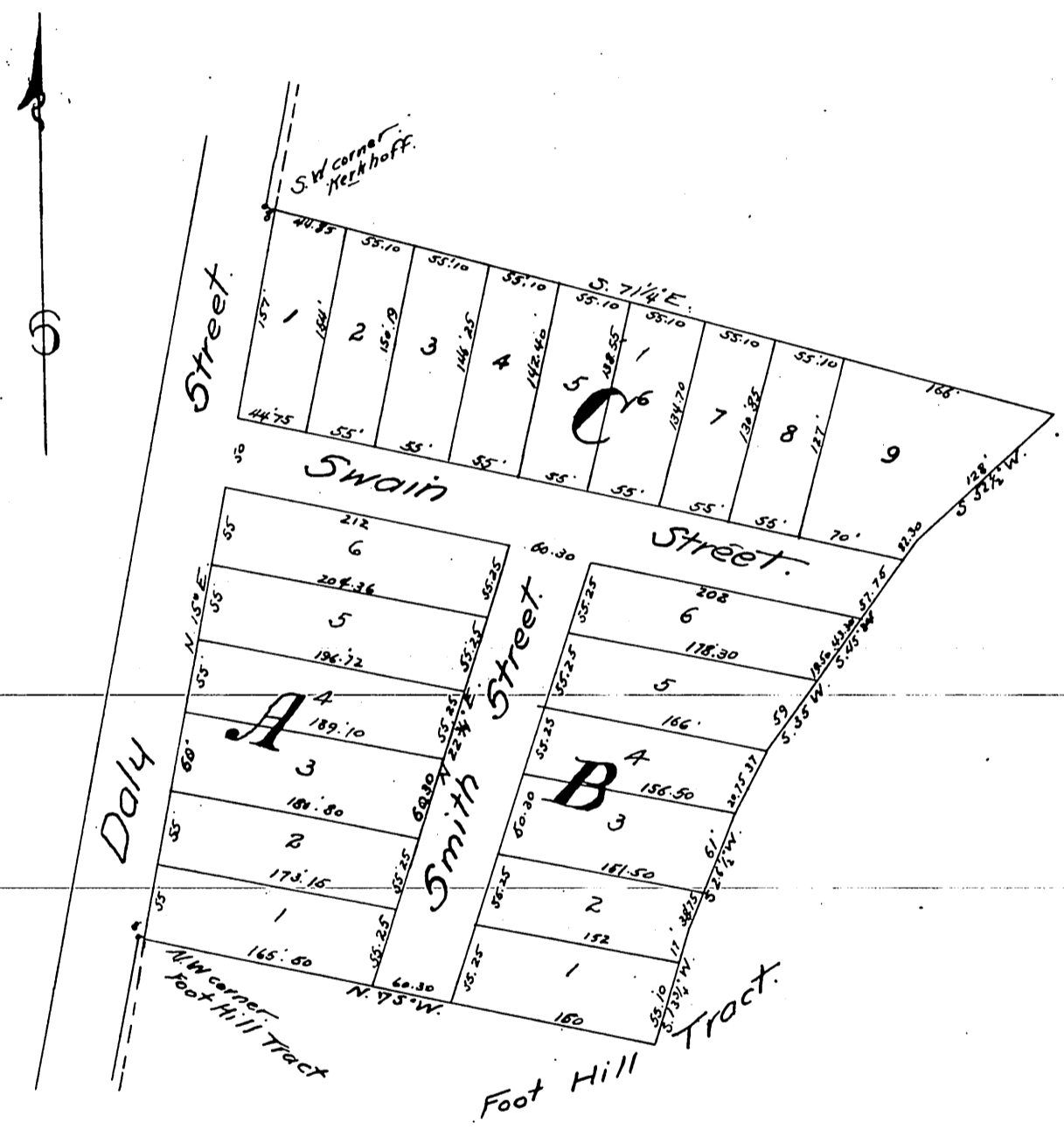


Map
of
Smith and Swain's Subdivision
of
The Hart Horn Tract
East Los Angeles Cal^a
M Kelleher Sur. Mar. 1886.
Scale 60 feet to one inch.



A full true and correct copy of the original (reduced to the scale of 120 feet to one inch) recorded November 20th 1886 at 44 Min. past 3 P.M. at request of Milton Smith.

Frank A. Gibson County Recorder
By Arthur Bray Deputy