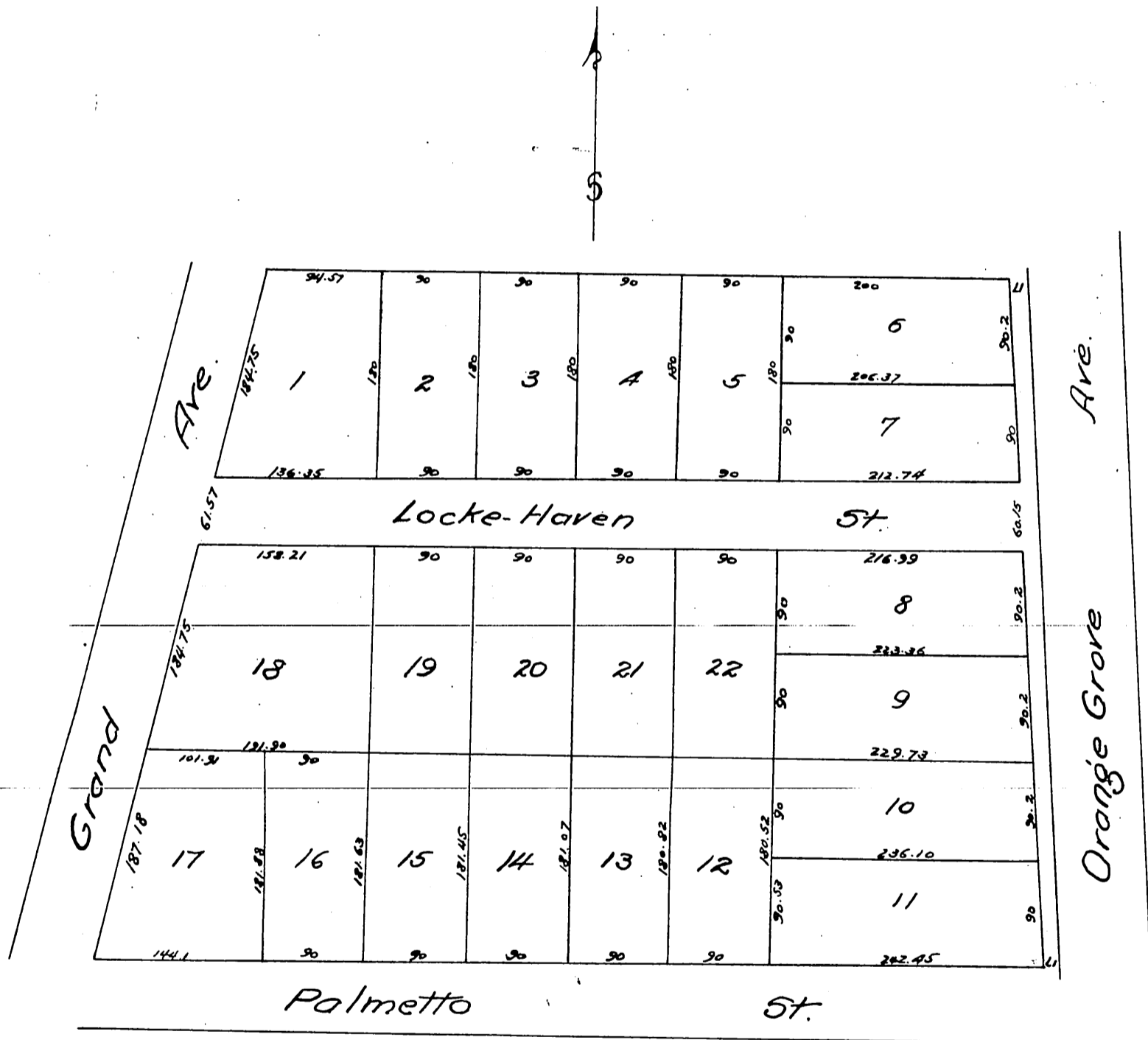


Map of Locke-Haven

A subdivision of a portion of lands marked Gibson of Division "D"
of the lands of the San Gabriel Orange Grove Association, Rancho San Pasqual,
Pasadena, Cal.

Surveyed Nov. 1886 by J.M. Willard, C.E.

Scale 60ft = 1 inch.



A full true and correct copy of the original reduced to the scale
of 120ft to one inch) recorded November 23rd 1886 at 11¹² A. M.
at request of Mrs R.C. Locke.

Frank A. Gibson County Recorder.
By Arthur Ray Depu