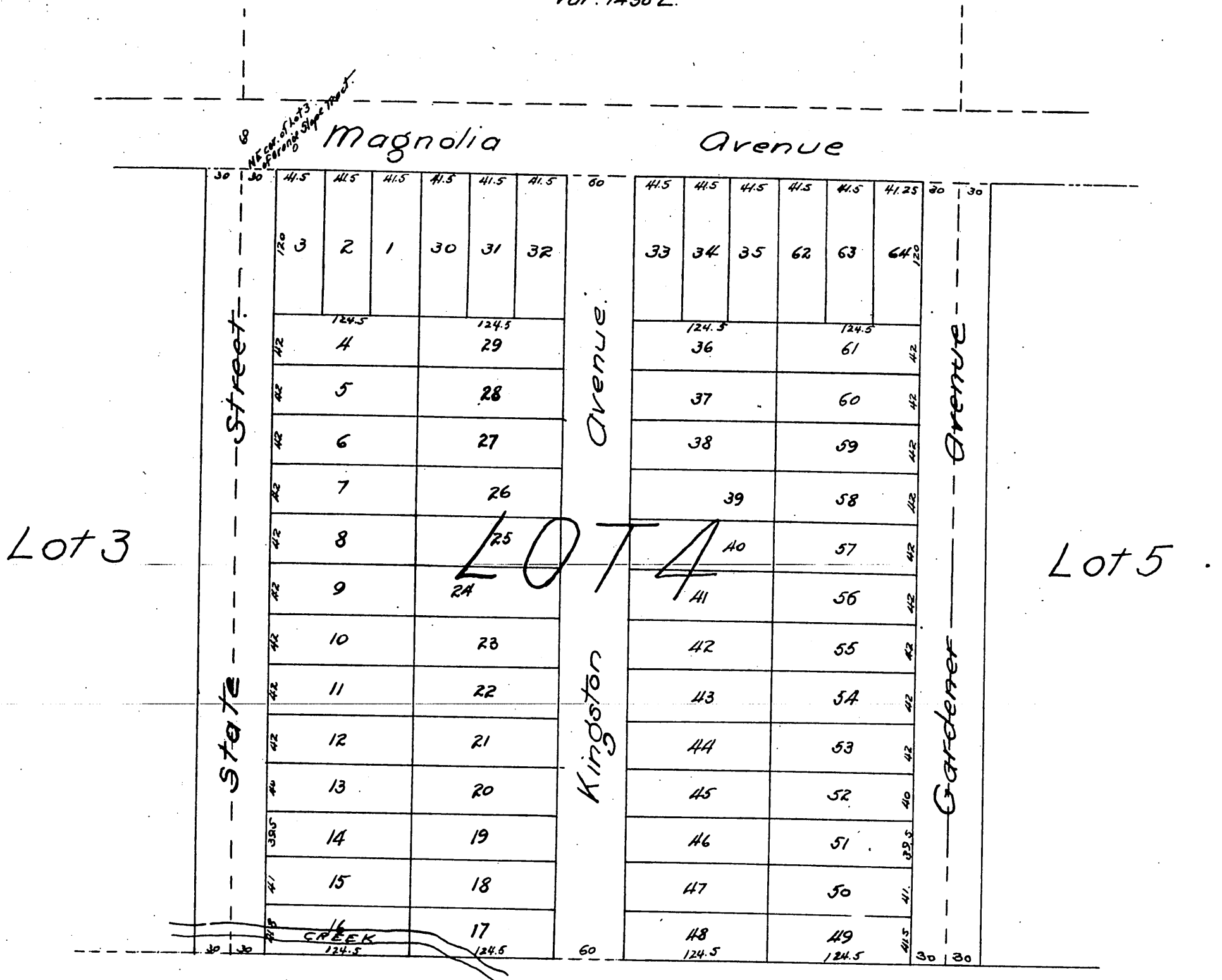


Map of
 Tuthill's and Mrs. Gleason's Subdivision
 of Lot 4 of the
 Orange Slope Tract.
 Los Angeles Cal.
 Made in November 1886 by J. A. Bernal Sur. & C. E.
 Scale 50 = 1 inch. True Courses.
 Var: 14° 30' E.



A full true and correct copy of the original
 reduced from a scale of 50 feet to one inch to a
 scale of 100 feet to one inch recorded Nov. 23rd 1886 at
 40 min. past 2 P.M. at request of W. H. Tuthill.
 Frank P. Gibson County Recorder.
 By Arthur Bray Deputy,