

State of California
Los Angeles County

I, J.H. Fleming, certify that I am the J.H. Fleming, who plotted and had recorded the map of the J.H. Fleming's Subdivision, as recorded in Book 12, page 21, of Miscellaneous Records in the office of the Recorder of said Los Angeles County, and that the said map as recorded is erroneous, in this, that the point indicated by the words "old corner stake" on the north west line of Mountain Avenue and near the center of Mercer Street instead of the Southeast corner of said Subdivision, should be designated as 653 1/2 feet from the West side of Fair Oaks Ave.

J. H. Fleming.
Subscribed and sworn to before me
this 8th day of November A.D. 1887.

[Seal]

L. C. Winston.
Notary Public.

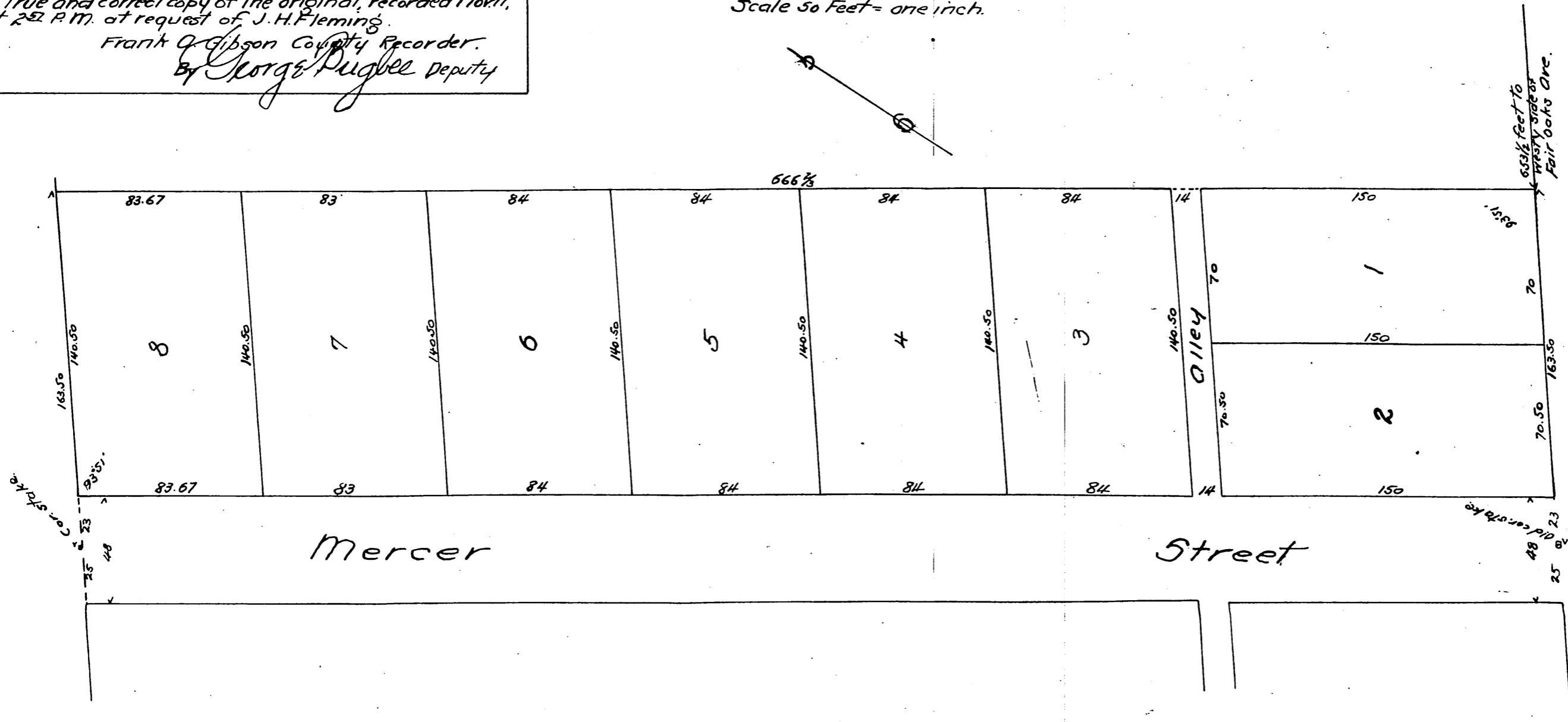
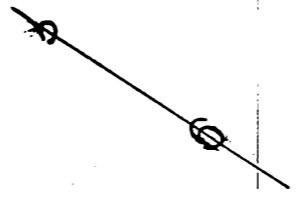
A full, true and correct copy of the original, recorded Nov. 11, 1887 at 2:52 P.M. at request of J. H. Fleming.

Frank A. Gibson County Recorder.
By George Duggee Deputy

J. H. Fleming's Subdivision of 2 1/2 Acre Plot on Mountain Avenue City of Pasadena Cal.

Oct 1st 1886 Wm W. Mills C.E. Surveyor

Scale 50 Feet = one inch.



A full true and correct copy of the original
recorded Nov. 24th 1886 at 6 min. past 11 A.M.
at request of J. H. Fleming.
Frank A. Gibson County Recorder.
By Arthur Bray Deputy.