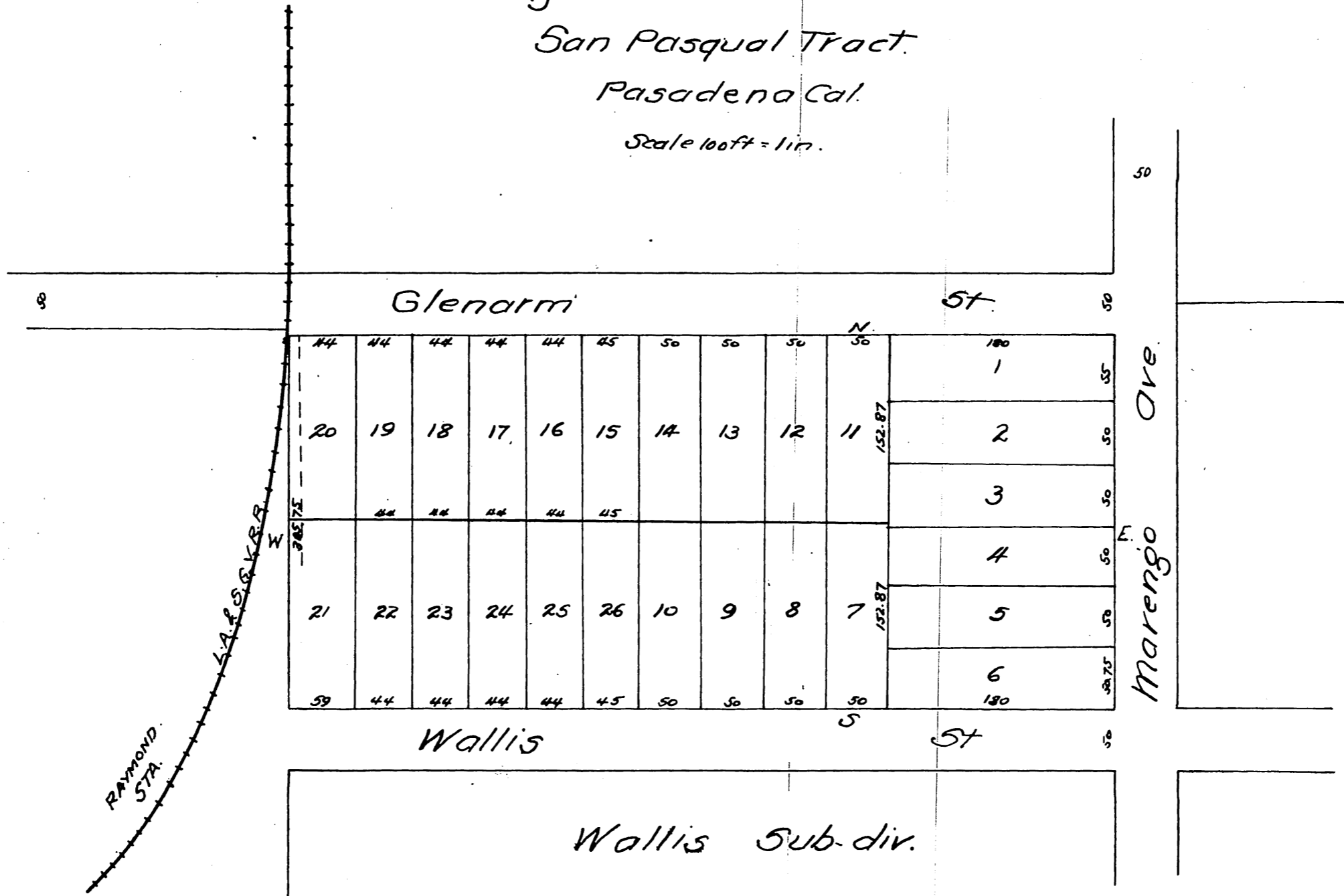


Plat  
of  
T. Banbury's Tract  
being south half of Lot 10 Block "N"  
San Pasqual Tract.  
Pasadena Cal.

Scale 100ft = 1in.



All true and correct copy of the original  
recorded No. 24th 1886 at 59 min. past 1 P.M.  
at request of T. Banbury.

County Recorder  
Deputy.

