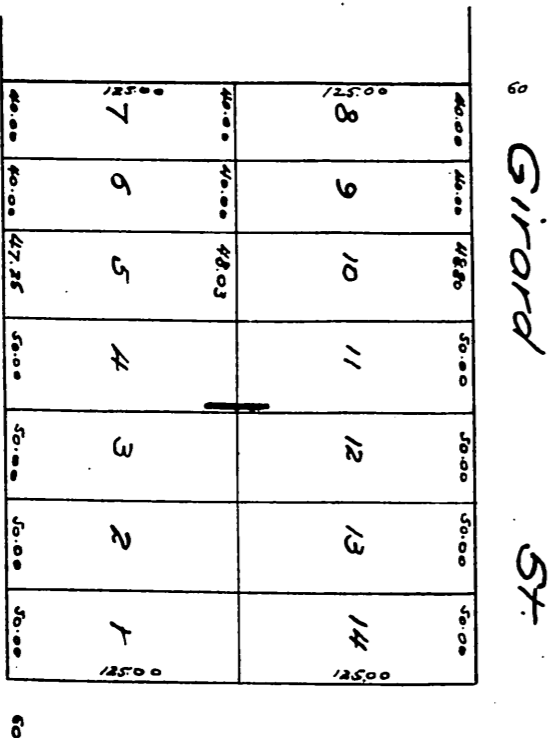
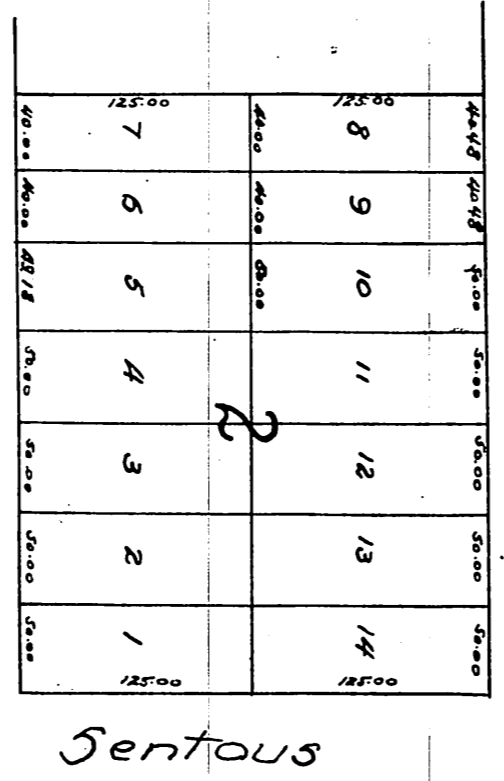
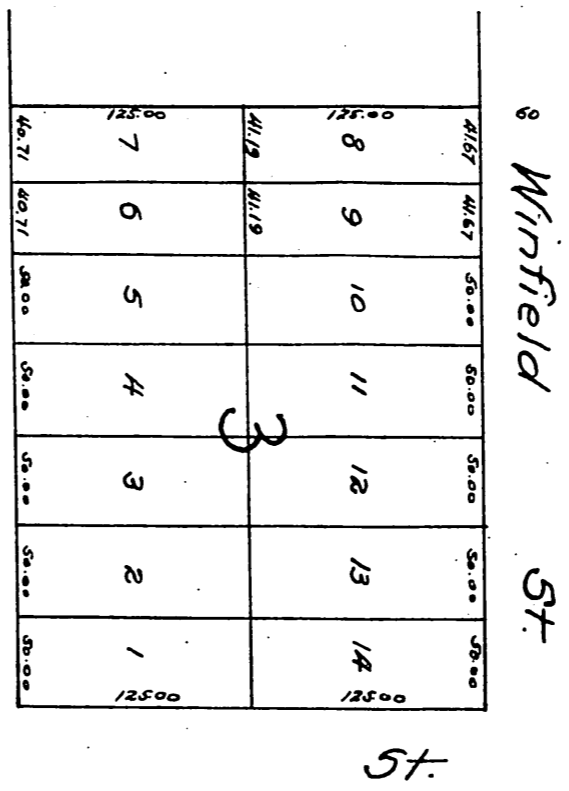
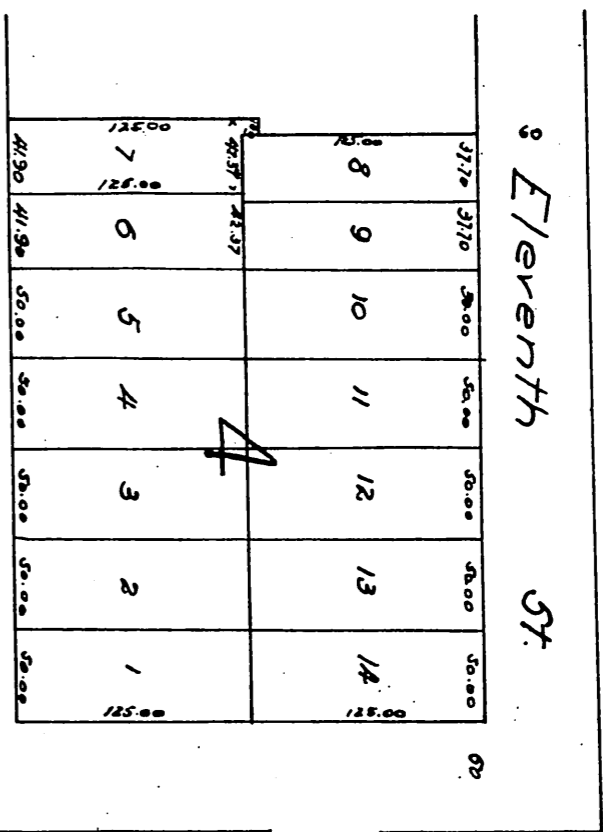


Sentous Tract  
 The subdivision of a  
 part of lot 7 Block 36 Hancock Survey  
 Los Angeles City Cal.  
 Scale 50 feet to one inch E.G. Jones C.E.



A full true and correct copy of the original reduced from a scale of 50 feet to one inch to a scale of 100 feet to one inch. recorded Nov. 24th 1886 at 21 min. past 3 P.M. at request of Jean Sentous  
 Frank A. O'Sullivan  
 County Recorder  
 By Nathan Bay Deputy 12