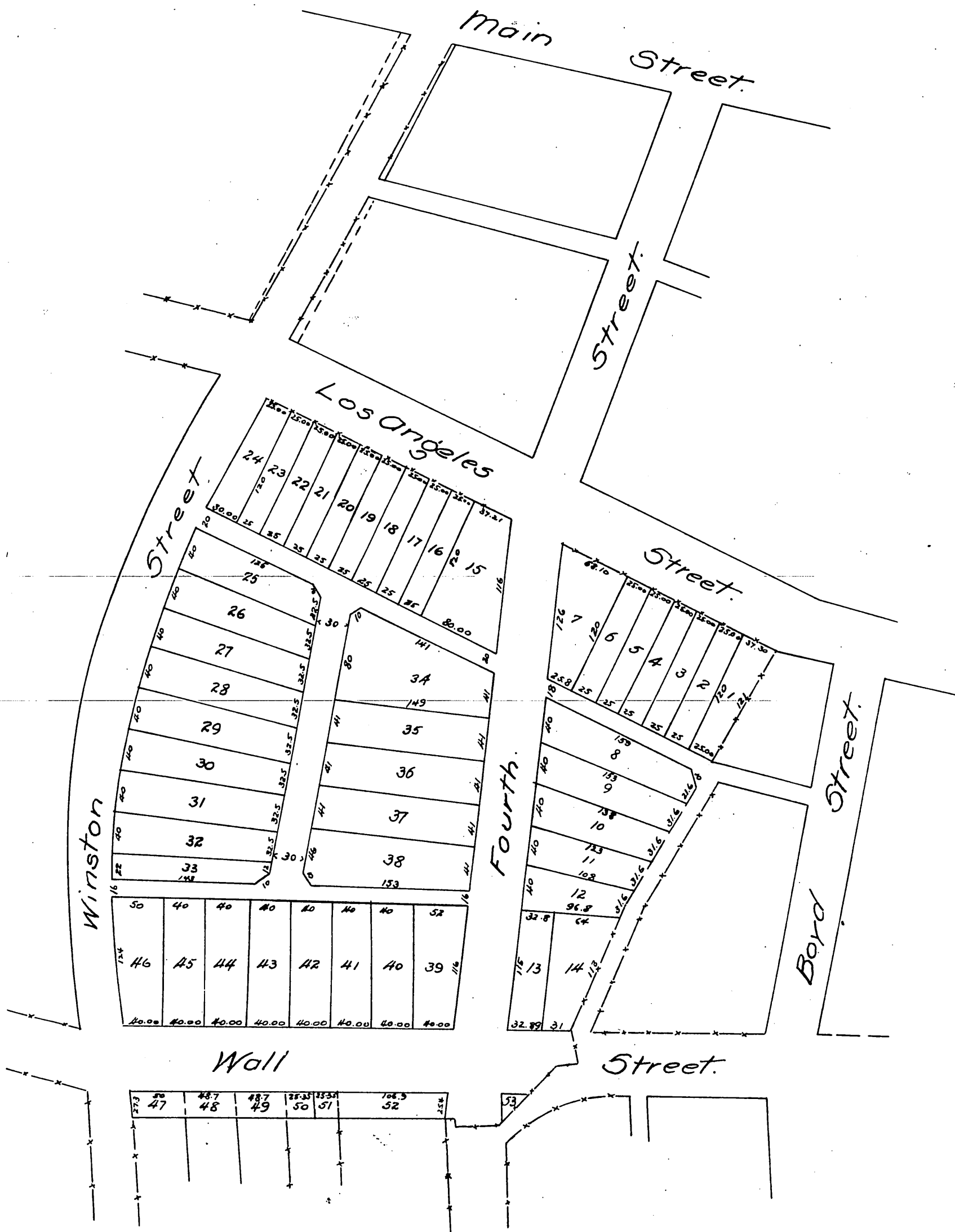


Map  
of the  
Mills' Tract.  
in the  
City of Los Angeles

Subdivided at the request of Howard W. Mills in  
November 1886 by Geo. C. Knox.

Scale 100 feet to one inch.



A full true and correct copy of the original  
recorded Nov 26<sup>th</sup> 1886 at 26 min. past 2 P.M.  
at request of H.W. Mills.

Frank A. Gibson County Recorder.  
By Arthur Bray Deputy.