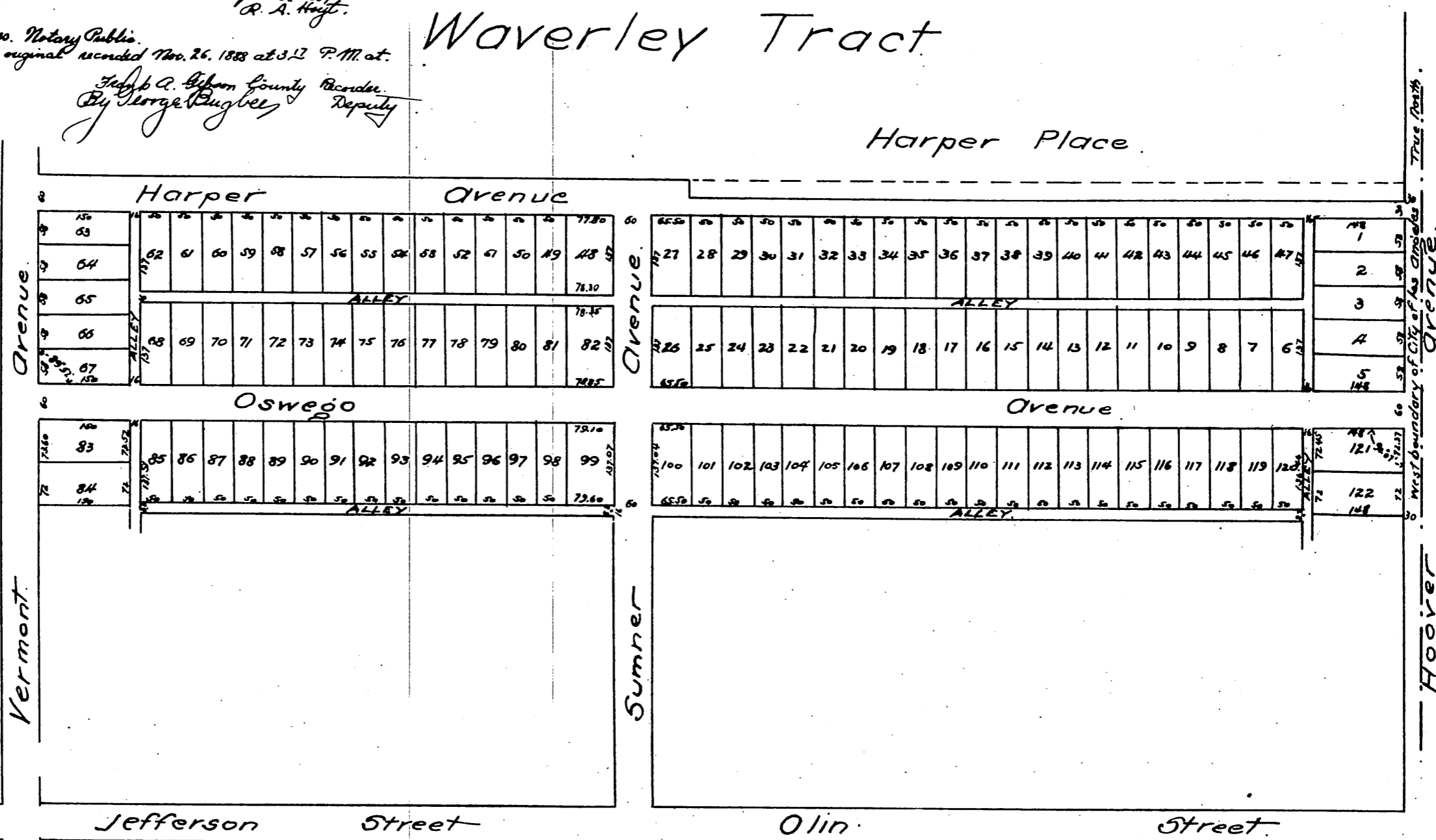


Appendix to Book 12, page 28 Misc Records.  
 State of California }  
 County of Los Angeles } ss. R. A. Hoyt, being duly sworn on oath states that he is one of the  
 owners in interest in the tract of land in the South half of the North west quarter (S 1/2 of NW 1/4)  
 of Section Six (6) Township Two (2) South Range Thirteen (13) West S. E. 72, which was  
 subsequently subdivided and is shown as shown at page 28, Book 12 of  
 Miscellaneous Records of Los Angeles County, Cal. and that subdivision as so recorded  
 includes the two tracts of land described at Dead Book 314 pages 31 & 33 respectively  
 and no other land. Said two deeds were made by R. A. & B. M. Hoyt to Dan  
 McFarland Theo. Missenlonger & William Bonnell and recorded Sept 28<sup>th</sup> 1887.  
 R. A. Hoyt.  
 Subscribed & sworn to before me  
 this 26<sup>th</sup> day of November 1888 }  
 Samuel P. Cress, Notary Public.  
 At Fall View and correct copy of the original recorded Nov. 26, 1888 at 3:12 P.M. at  
 of A. E. Davis.

# Waverley Tract



Filed for Record  
 By George Bugbee, Deputy  
 Fred A. Gibson County Recorder



Frank A. Gibson, County Recorder  
 Deputy  
 12

At 11, true and correct copy of the original  
 reduced from a scale of 100 feet to one inch to a  
 scale of 200 feet to one inch recorded Nov 26<sup>th</sup> 1888  
 at 52 min. past 2 P.M. at request of Lichtenbach, Bentler & Co.

Surveyed by Fred Eaton  
 Los Angeles Cal. September 1886  
 Scale 100 ft. = 1 inch

