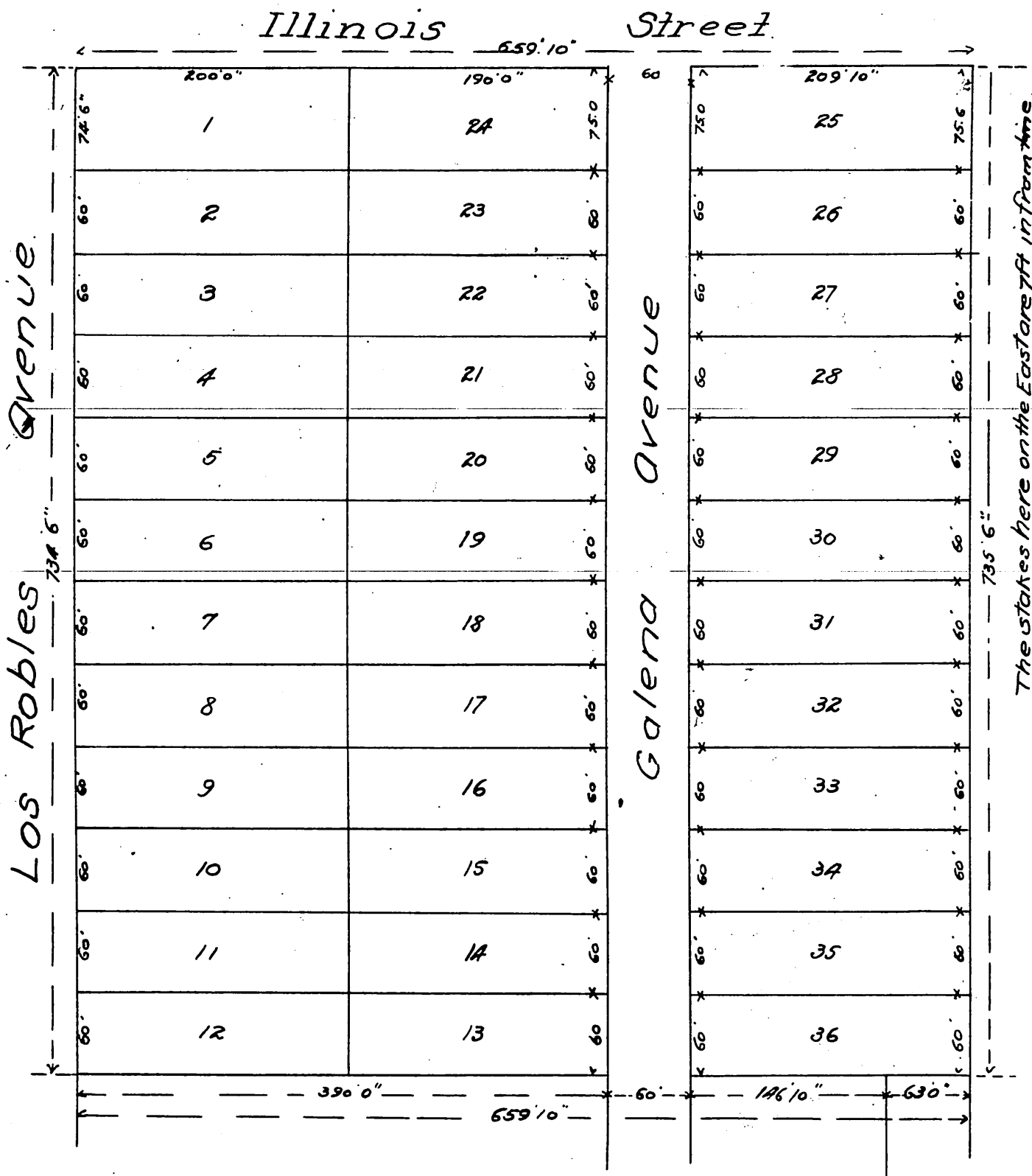


Plan showing
 Hewitts Subdivision
 of Lots 1 & 2 Block 3
 San Pasqual Tract Pasadena
 Los Angeles Co. Cal.
 Scale 50ft = one inch
 Simpson & Archer Architects & Civil Engineers.

5

Note: The stakes on Los Robles Avenue
 are 5ft. in from lot line and on
 Illinois Street 15ft. in from lot line.



A full, true and correct copy of the original.
 (reduced to the scale of 100 feet to one inch)
 recorded Nov. 27, 1886 at 1st P.M. at request of
 James Hewitt
 Frank A. Gibson County Recorder.
 By Arthur Bray Deputy.