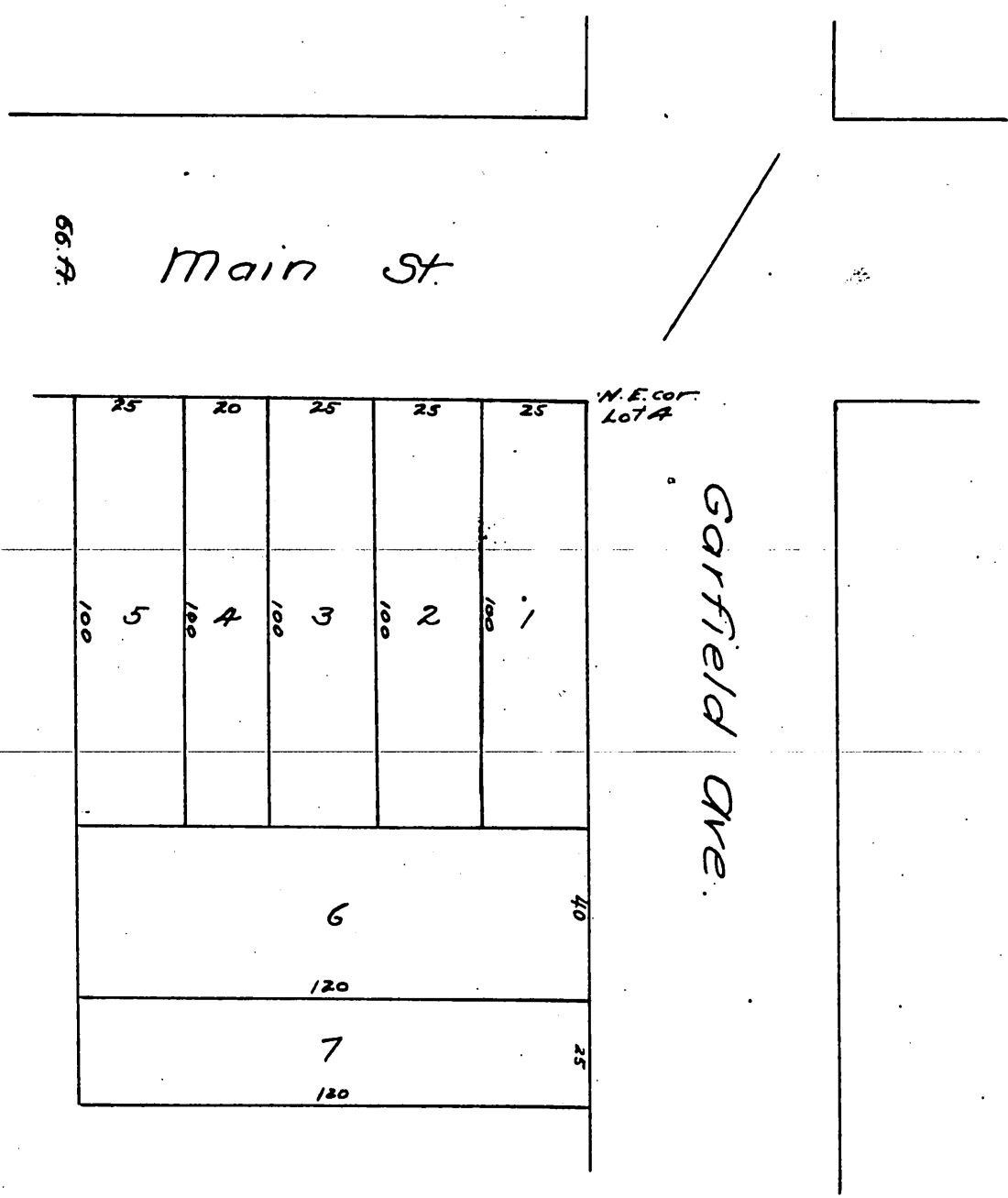


Map
 — OF —
 Searles Sub-division
 of Lots 4 & 5
 H. W. Stanton's Sub-division.
 Alhambra, Cal. 1886.
 Scale 25 ft. to 1 in.



A full, true and correct copy of the original
 (reduced to the scale of 40 feet to one inch)
 recorded Nov. 29, 1886 at 9⁵⁴ A.M. at request
 of H. W. Stanton.

Frank A. Gibson County Recorder.
 By Arthur Bray Deputy.