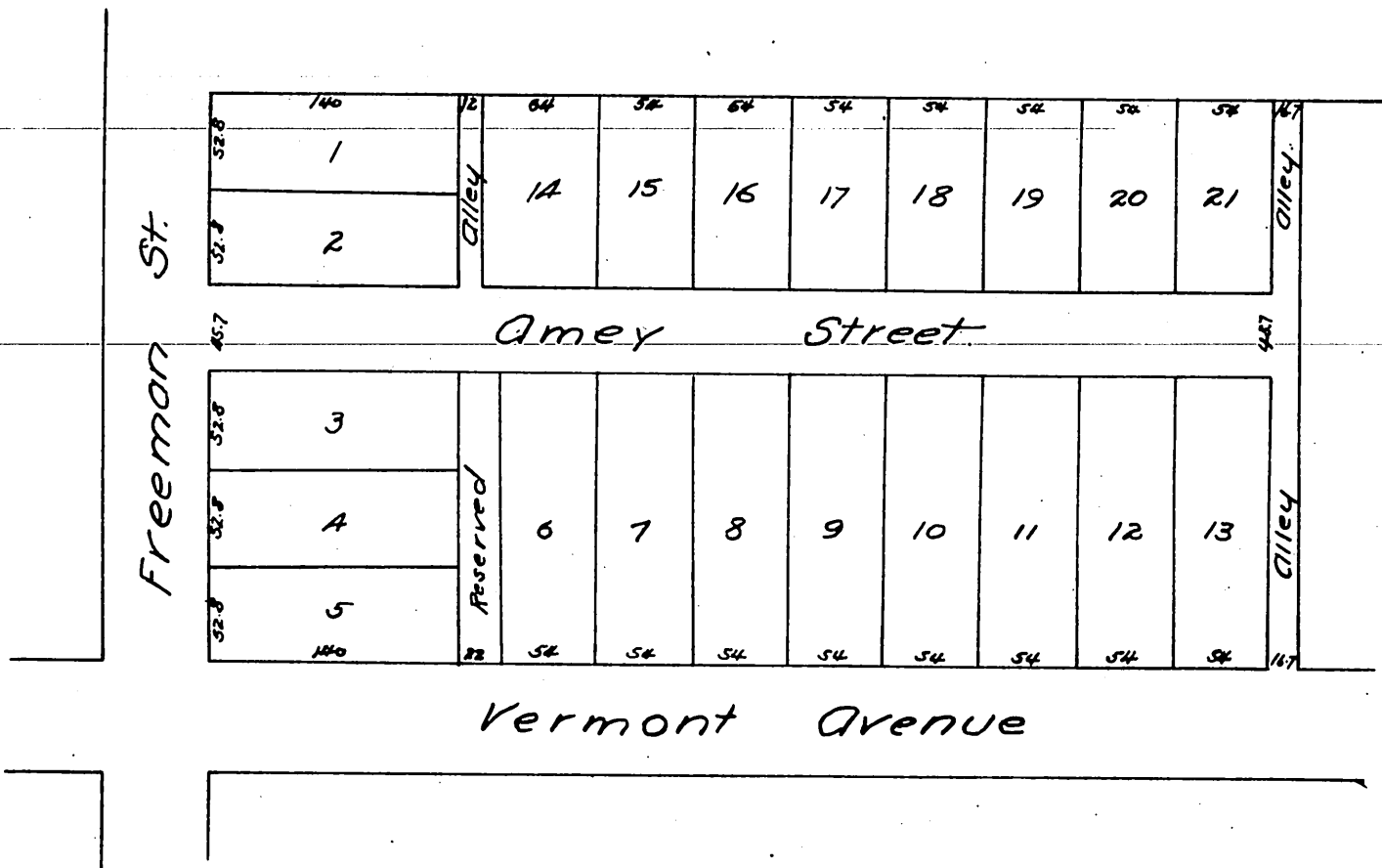


*Map*  
 OF THE  
*Amey Tract*  
 as platted by  
 C. O. Luckenbach November 1886  
 scale 1 inch = 40 feet.



A full, true and correct copy of the original  
 (reduced to the scale of 100 feet to one inch)  
 recorded Nov. 29, 1886 at 3<sup>30</sup> P.M. at request of  
 C. L. Patrick.

Frank A. Gibson, County Recorder.  
 By Arthur Bray, Deputy.