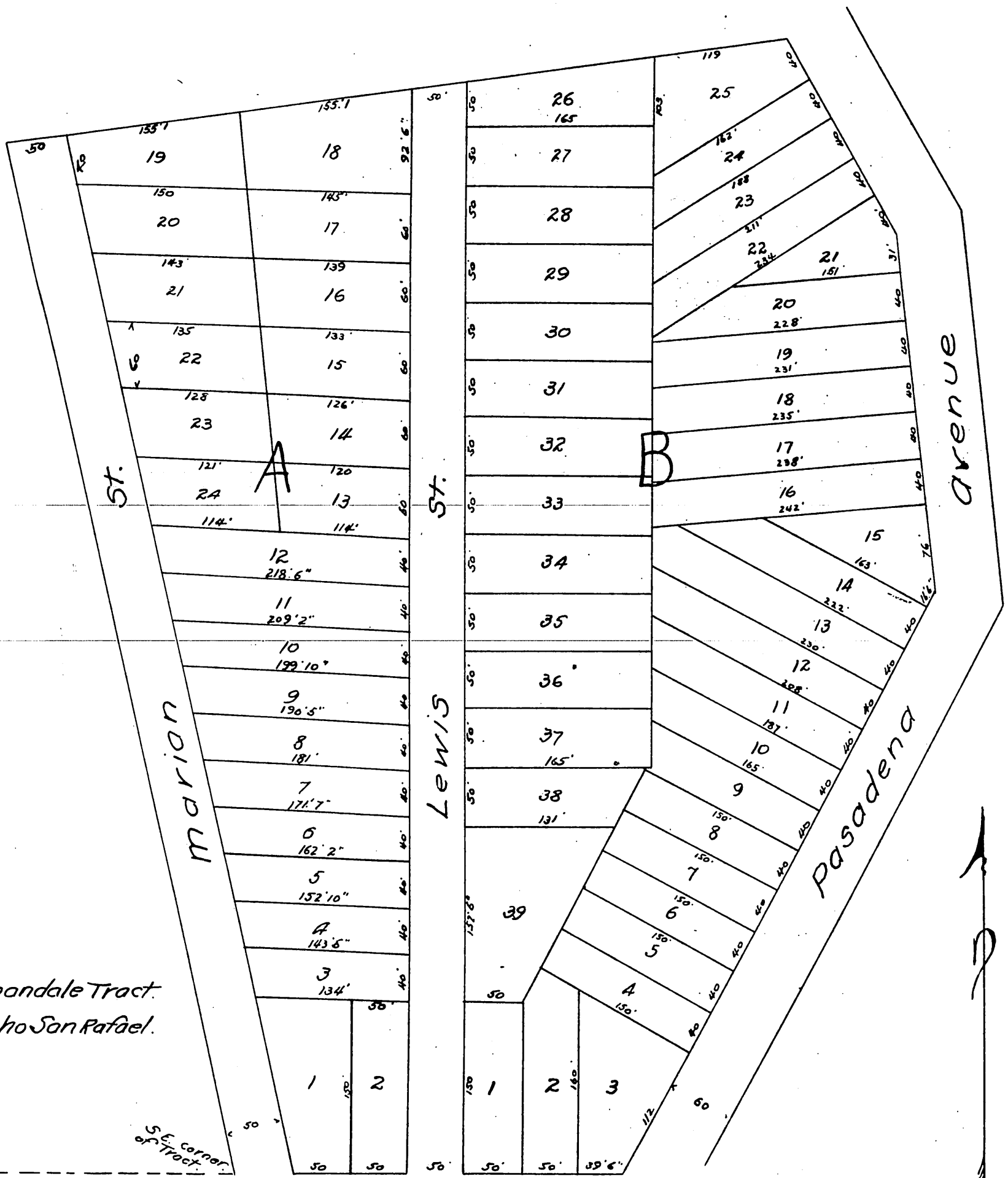


Lewis Tract

Garvanza Los Angeles Co., Cal.

Surveyed by Gerraize Purcell B.C.C.E.

Scale 50 feet to 1 inch.



Lot 1 Onondale Tract.
Rancho San Rafael.

A full, true and correct copy of the original
(reduced to the scale of 100 feet to one inch)
recorded Nov. 30, 1886 at 1st P. M. at request
of Emanuel Lewis.

Frank A. Gibson, County Recorder
By Arthur Bray, Deputy.