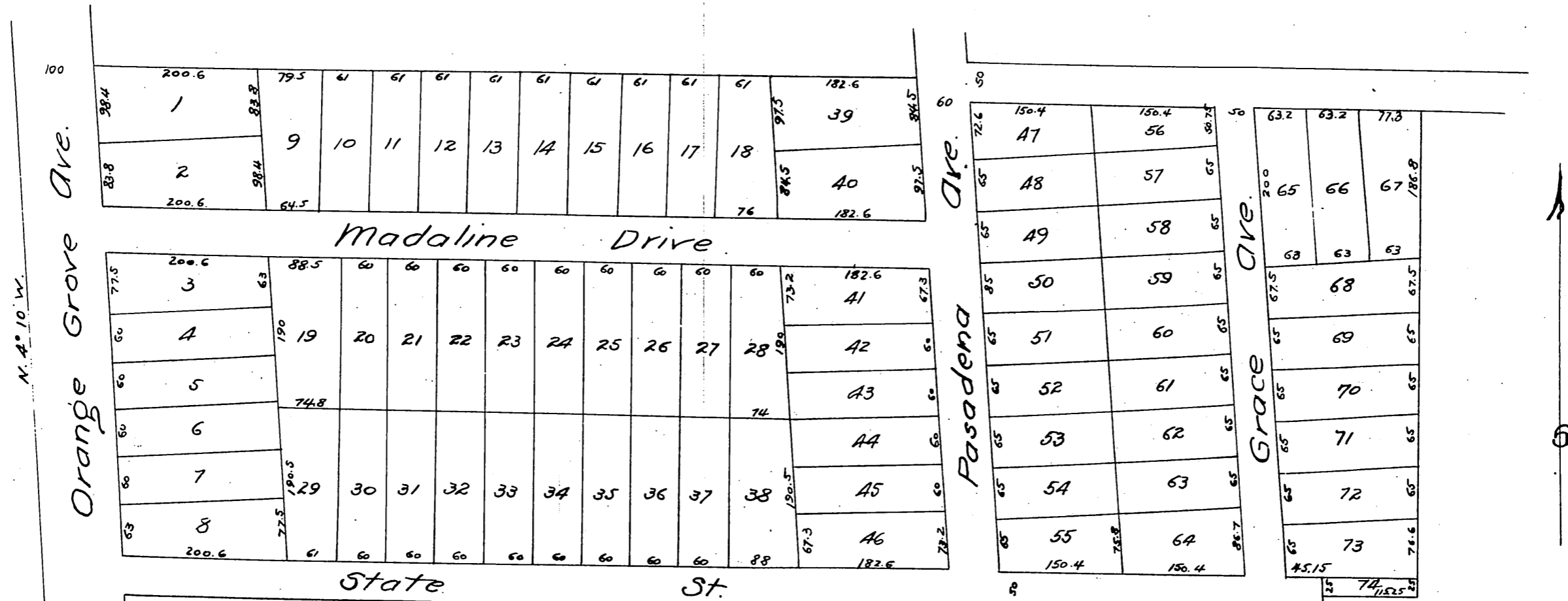


Map OF THE Chapman Tract.

Being a subdivision of a part of the tract marked
"Eaton" in Division "F" of the San Gabriel Orange
Grove Land and Water Association Lands as per
map recorded June 25th 1874. Book 2 Pages 556 to 59
Mis Records.
Jared Norton Surveyor Nov. 1886.
Scale 100 ft = 1 in.



A full, true and correct copy of the original
(reduced to the scale of 150 feet to one inch)
recorded Dec. 1, 1886 at 9⁵⁵ A.M. at request
of G. J. Brodesser.
Frank A. Gibson County Recorder.
By Arthur Bray Deputy.