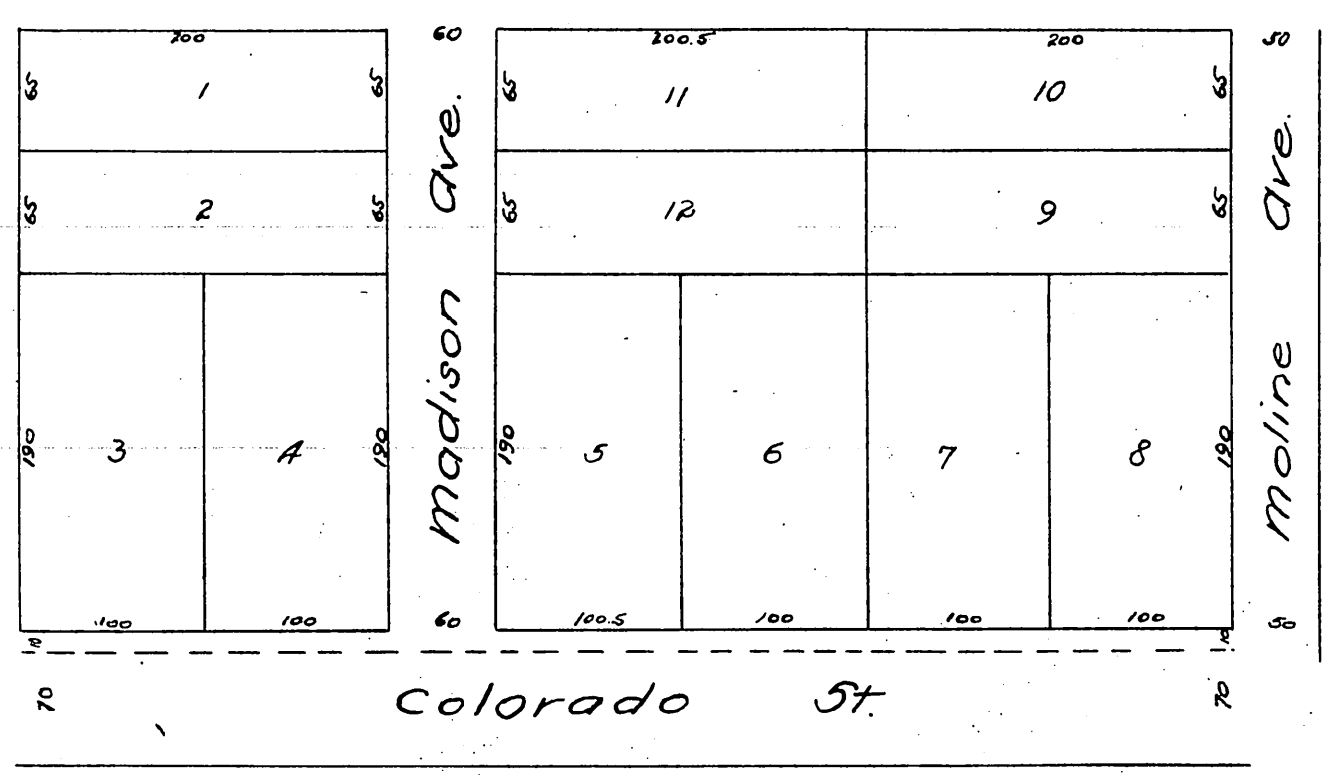


Map
 OF THE
 Dr. Converse Tract.
 a subdivision of the South half of Lot 10
 Block D San Pasqual Tract of the
 lands of the
 Lake Vineyard Land and Water Association
 Pasadena, Cal
 surveyed by J. M. Willard C.E.
 scale 60 ft to 1 inch.



A full, true and correct copy of the original.
 (reduced to the scale of 100 feet to one inch)
 recorded Dec. 1, 1886 at 2⁵⁵ P.M. at request of
 Russell, Fbor and Raney.
 Frank A. Gibson County Recorder.
 By Arthur Bray Deputy.