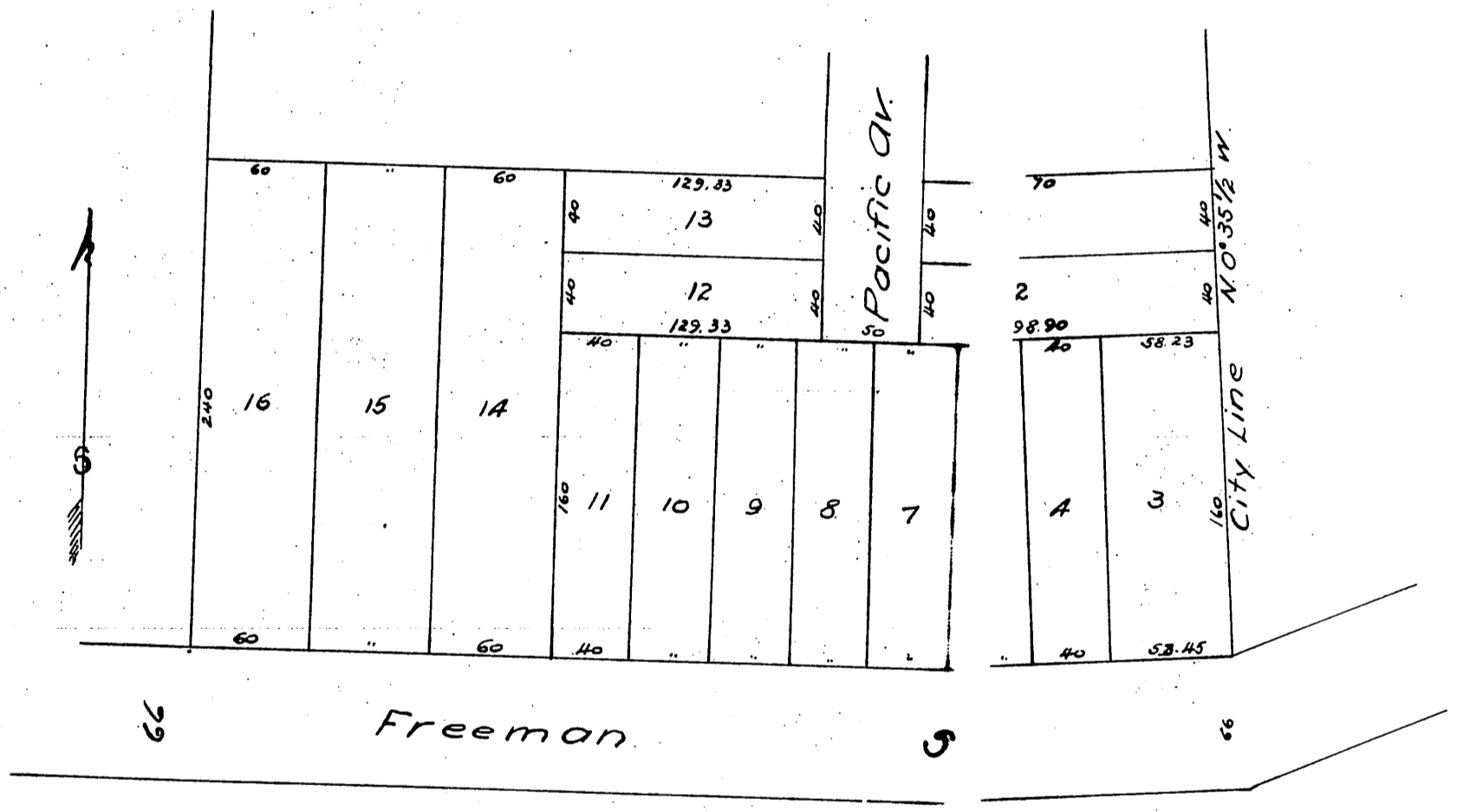


Map
 OF THE
 Mitchell Trac
 Surveyed Nov. 1886
 by W. F. McClure.



A full, true and correct copy of the original
 (reduced to the scale of 80 feet to an inch)
 recorded Dec. 1, 1886 at 4th P. M. at the
 office of
 Mrs. C. H. Scarborough,
 Frank O. Gibson County, order
 By Arthur Bray city.