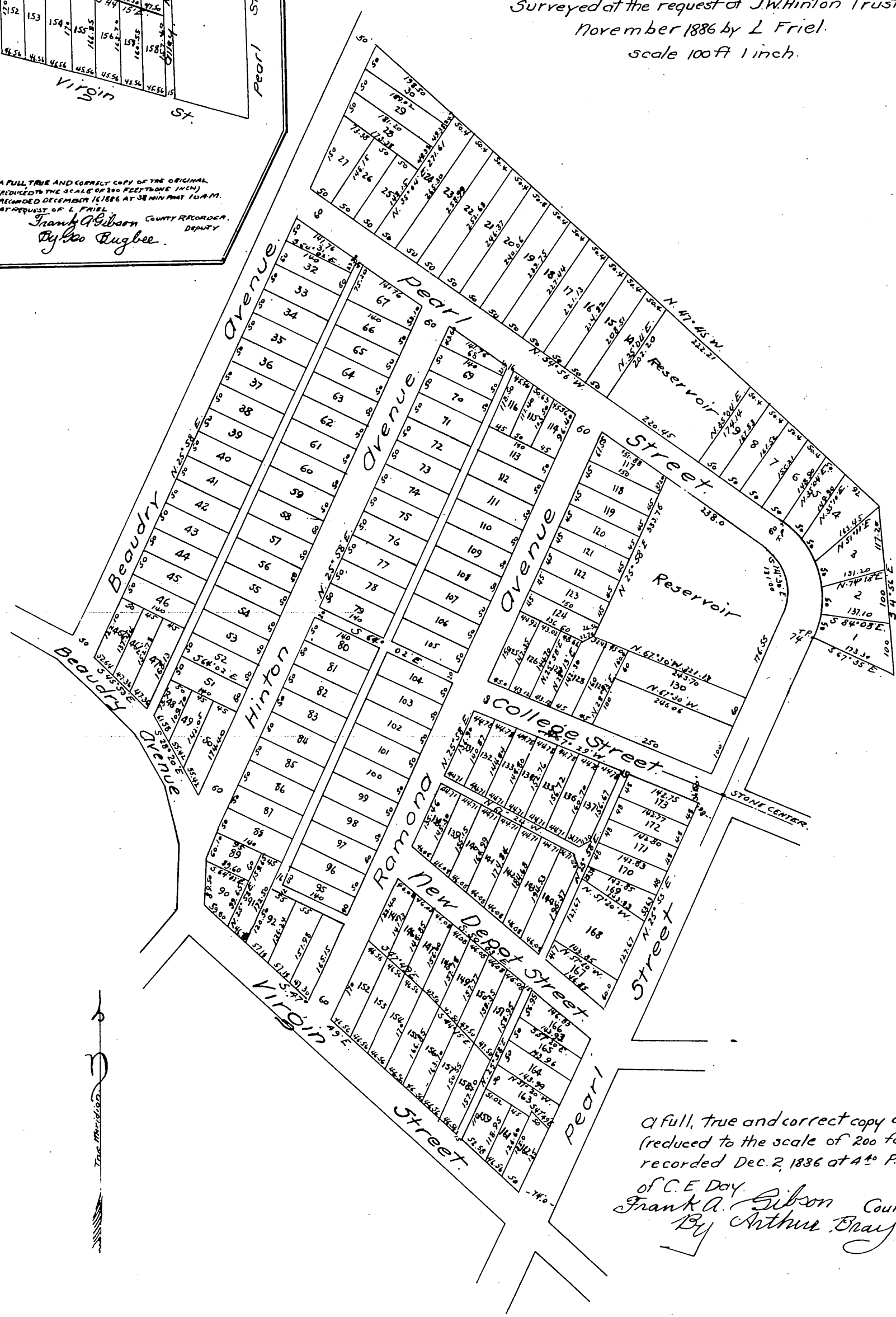


Map
OF PART OF THE
"Victor Heights Tract"
made by L. Friel.
TO CORRECT THE DEPTH OF LOTS MS. 146,
147, 148, 149 & 150 OF 3ND TRACT ERROR.
EASILY SHOWN ON MAP RECORDED IN BOOK 12
PAGE 46 MISS RECORDS L. A. CO. CAL.

A FULL TRUE AND CORRECT COPY OF THE ORIGINAL
(REDUCED TO THE SCALE OF 200 FEET TO ONE INCH)
RECORDED DECEMBER 16 1886 AT 3:45 MIN P.M. 10 A.M.
AT REQUEST OF L. FRIEL
Frank A. Gibson COUNTY RECORDER.
By Geo. Bugbee DEPUTY.

Map
OF THE
Victor Heights Tract
Los Angeles, California
Surveyed at the request of J.W. Hinton Trustee.
November 1886 by L. Friel.
scale 100 ft 1 inch.



A full, true and correct copy of the original
(reduced to the scale of 200 feet to one inch)
recorded Dec. 2, 1886 at 4:10 P.M. at request
of C. E. Day.
Frank A. Gibson County Recorder.
By Arthur Bray Deputy.