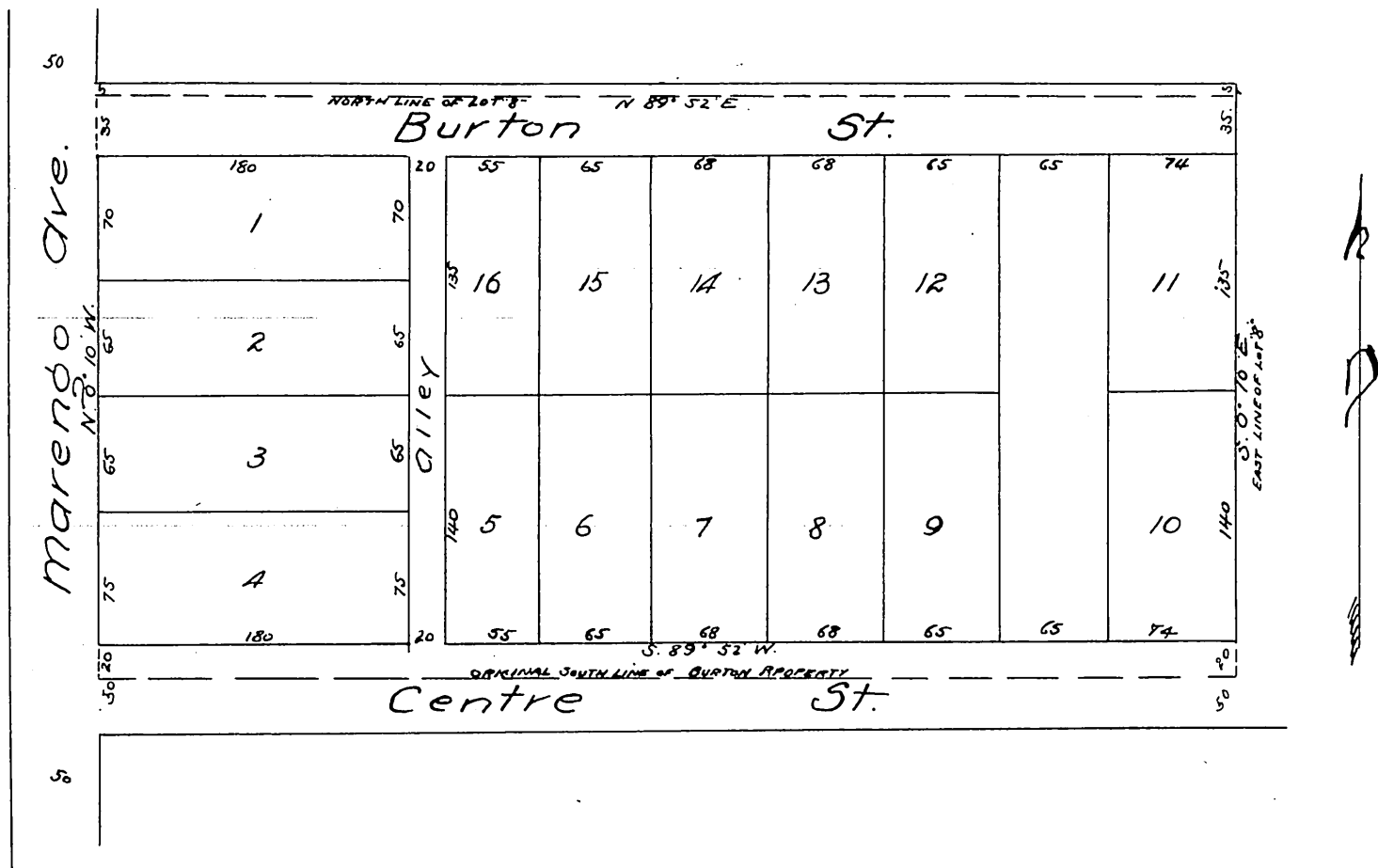


A Replat
 of
 Mary F. Burton's
 Subdivision of the North part
 of Lot 8 Block 1
 San Pasqual Tract.
 Pasadena.
 Los Angeles Co. Cal.
 surveyed Nov. 1886 by J. M. Willard C.E.
 scale 60 ft to one inch.



A full, true and correct copy of the original
 (reduced to the scale of 100 feet to one inch)
 recorded Dec. 7, 1886 at 1¹² P.M. at request of
 Mary F. Burton.
 Frank A. Gibson County Recorder.
 By Arthur Bray Deputy.