

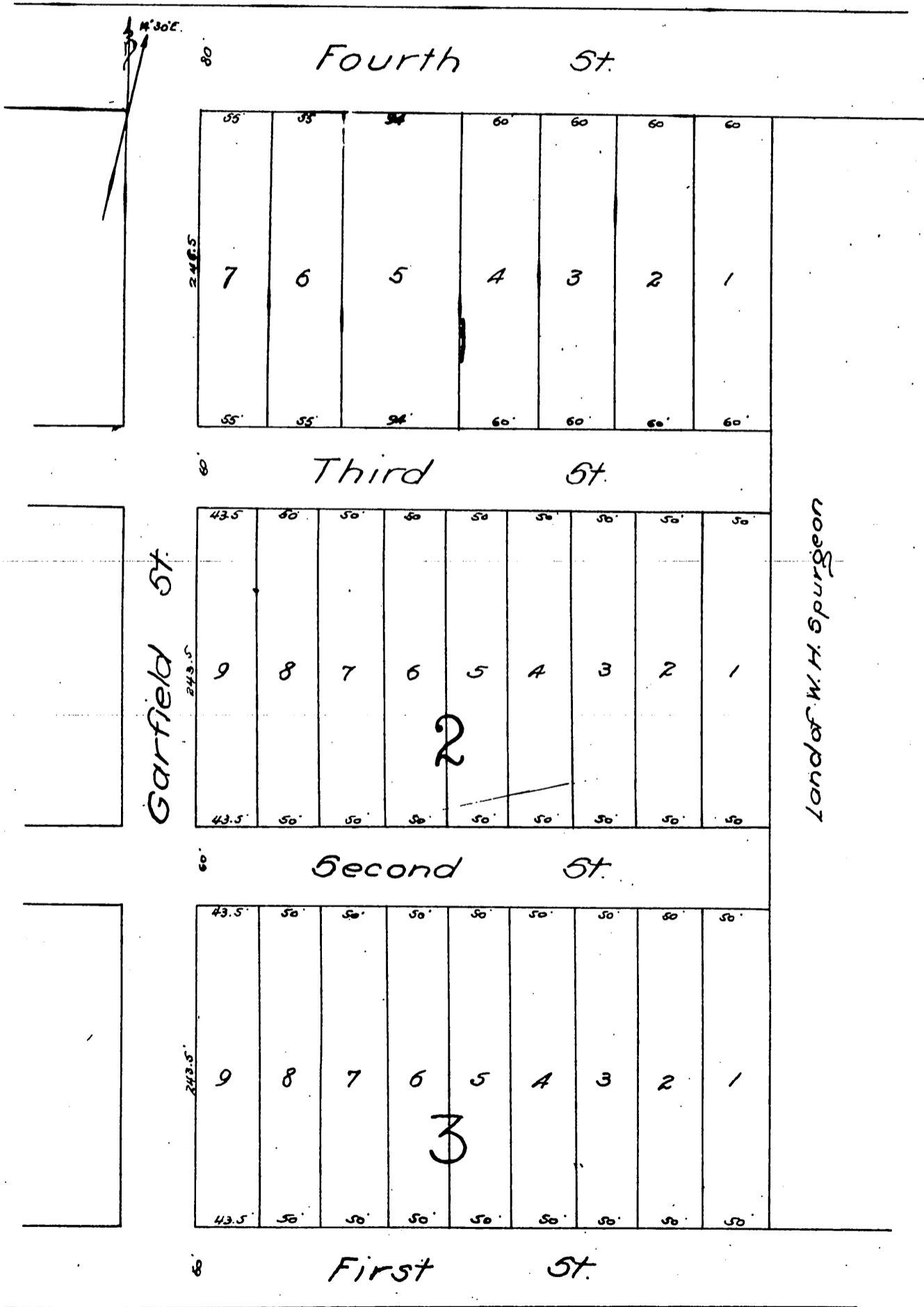
W. Z. Cook's Addition

TO

Santa Ana, Cal.

Harry F. Stafford Surveyor November 3^d 1886

mapped by M. A. Dunham Santa Ana.



A full, true and correct copy of the original recorded Dec. 19 1886 at 11³⁰ A.M. at request of Wm Z. Cook.

Frank A. Gibson County Recorder.
By Arthur Bray Deputy.