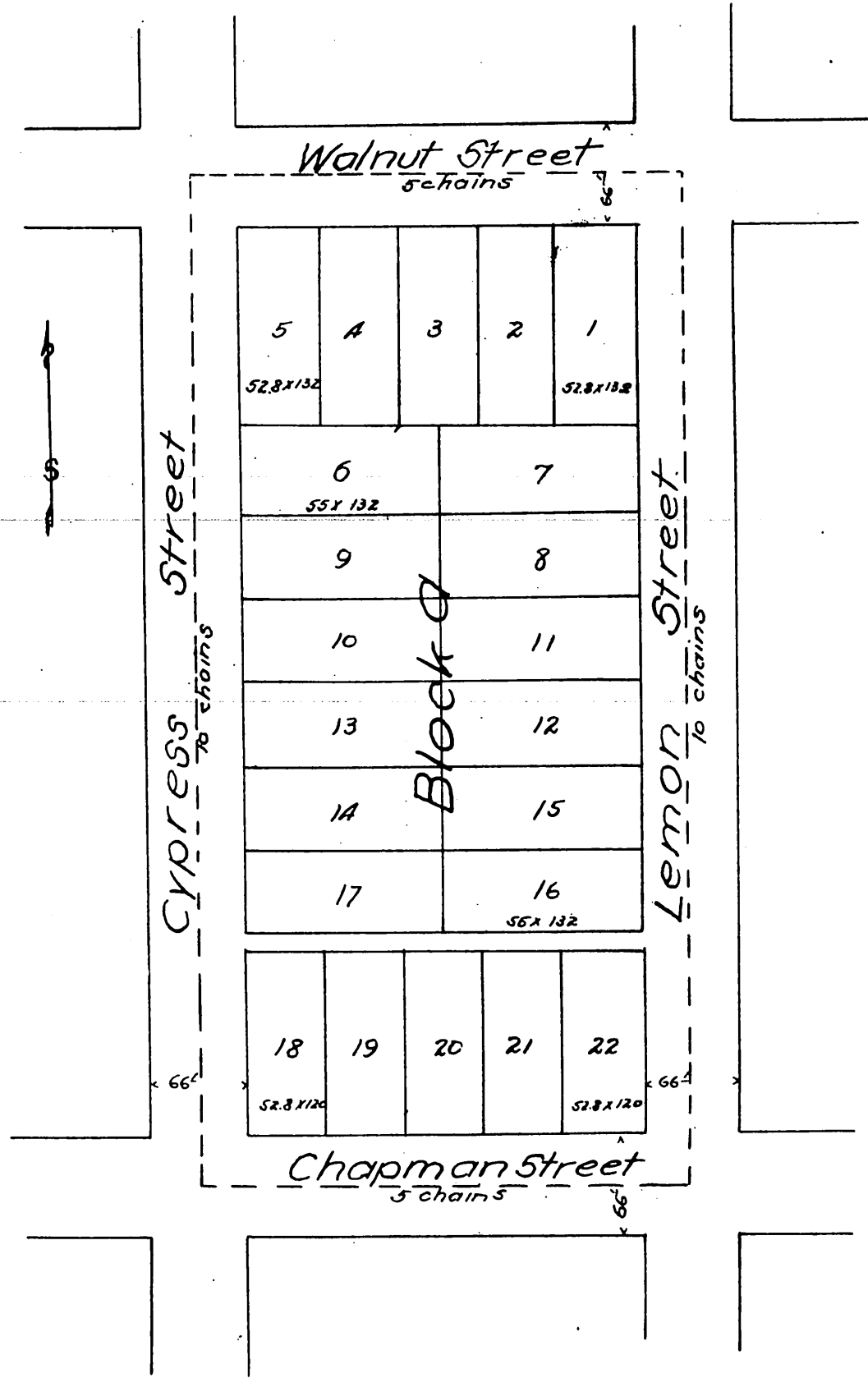


Subdivision
OF THE
Halladay Tract Block A
IN THE
Town of Orange L.A. County, Cal.

Description: The E 1/2 of Lot 22 of the Rich land Farm Lots in the A.B. Chapman Tract. Containing 5 acres scale 100ft to 1 in.



A full, true and correct copy of the original recorded Dec. 10, 1886 at 4⁵⁵ P.M. at request of W. B. Forsythe
 Frank A. Gibson County Recorder.
 By Arthur Bray Deputy.