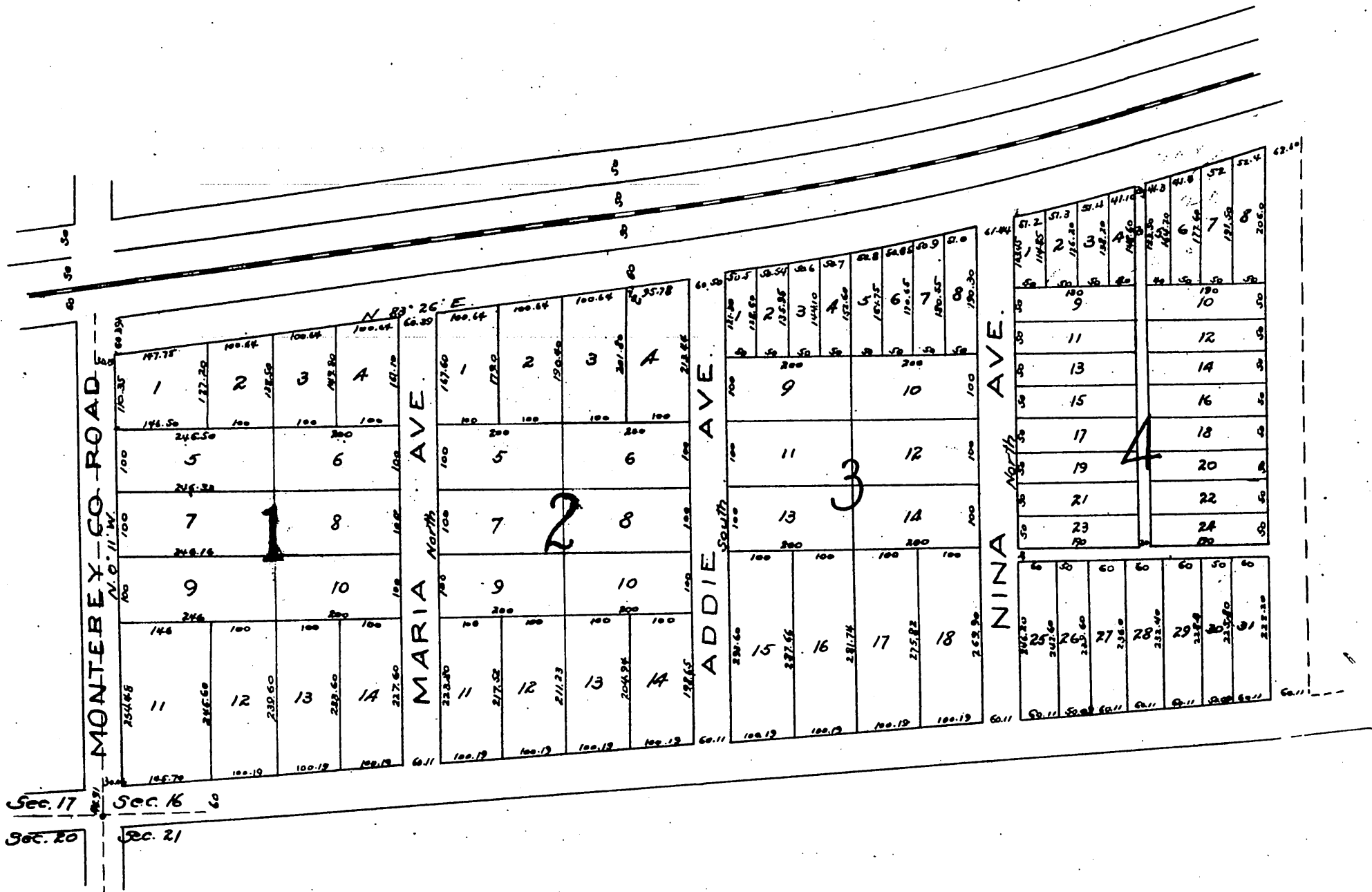


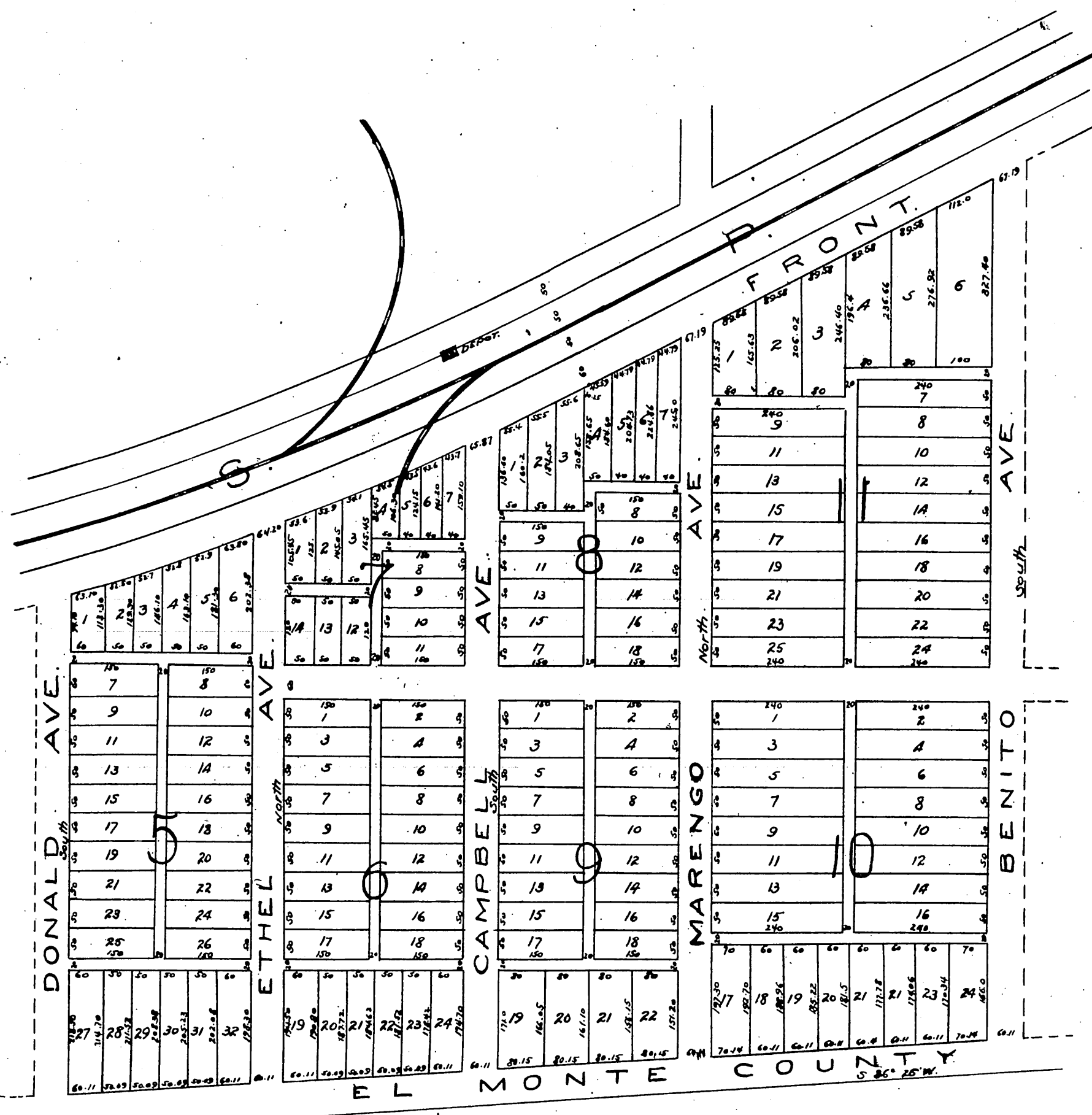
Map OF Ramona IN THE County of Los Angeles.

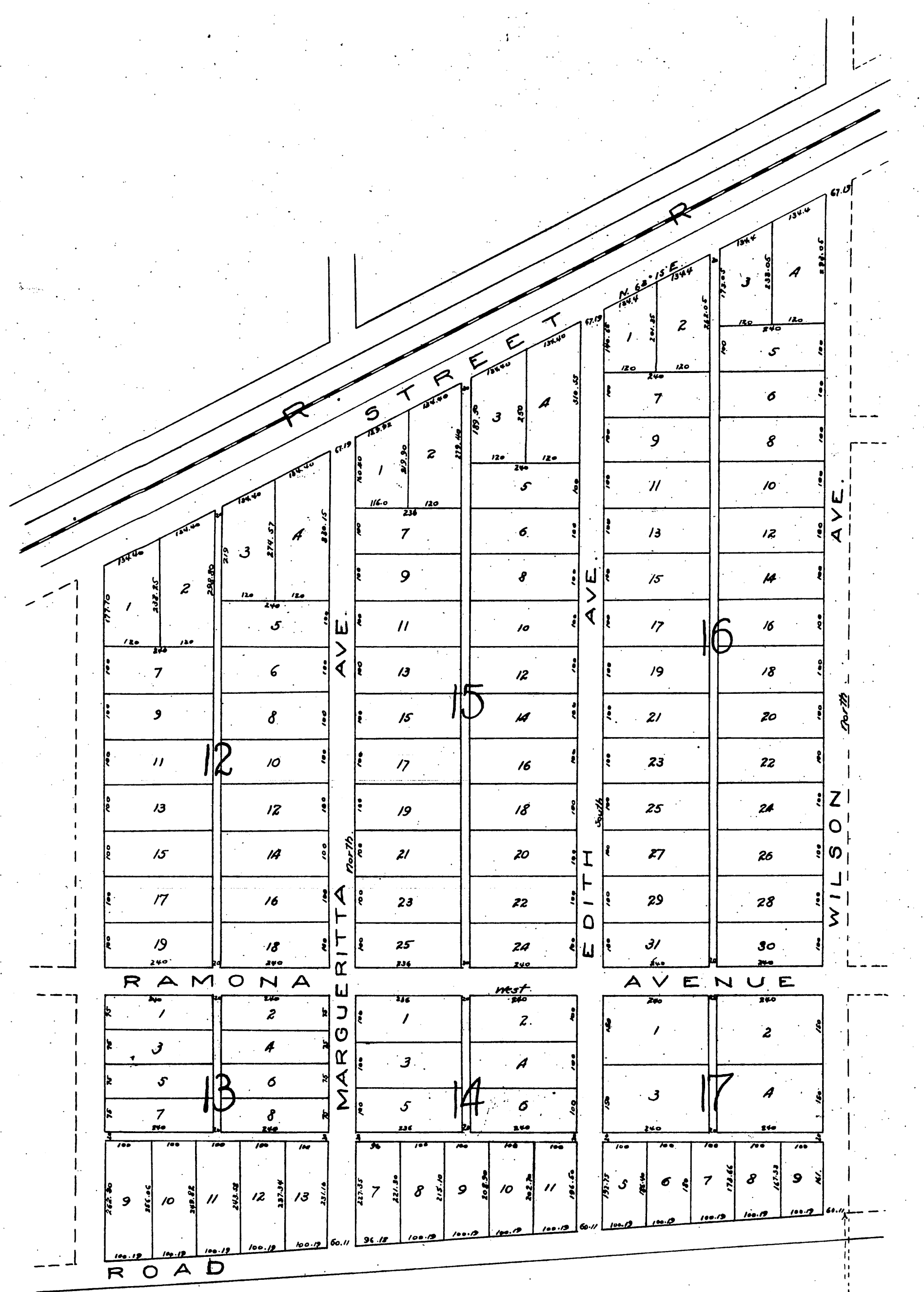
Property of San Gabriel Wine Company
Six miles from Los Angeles.

Surveyed Oct. 1886 by E.T. Wright
Scale 200 feet to one inch.

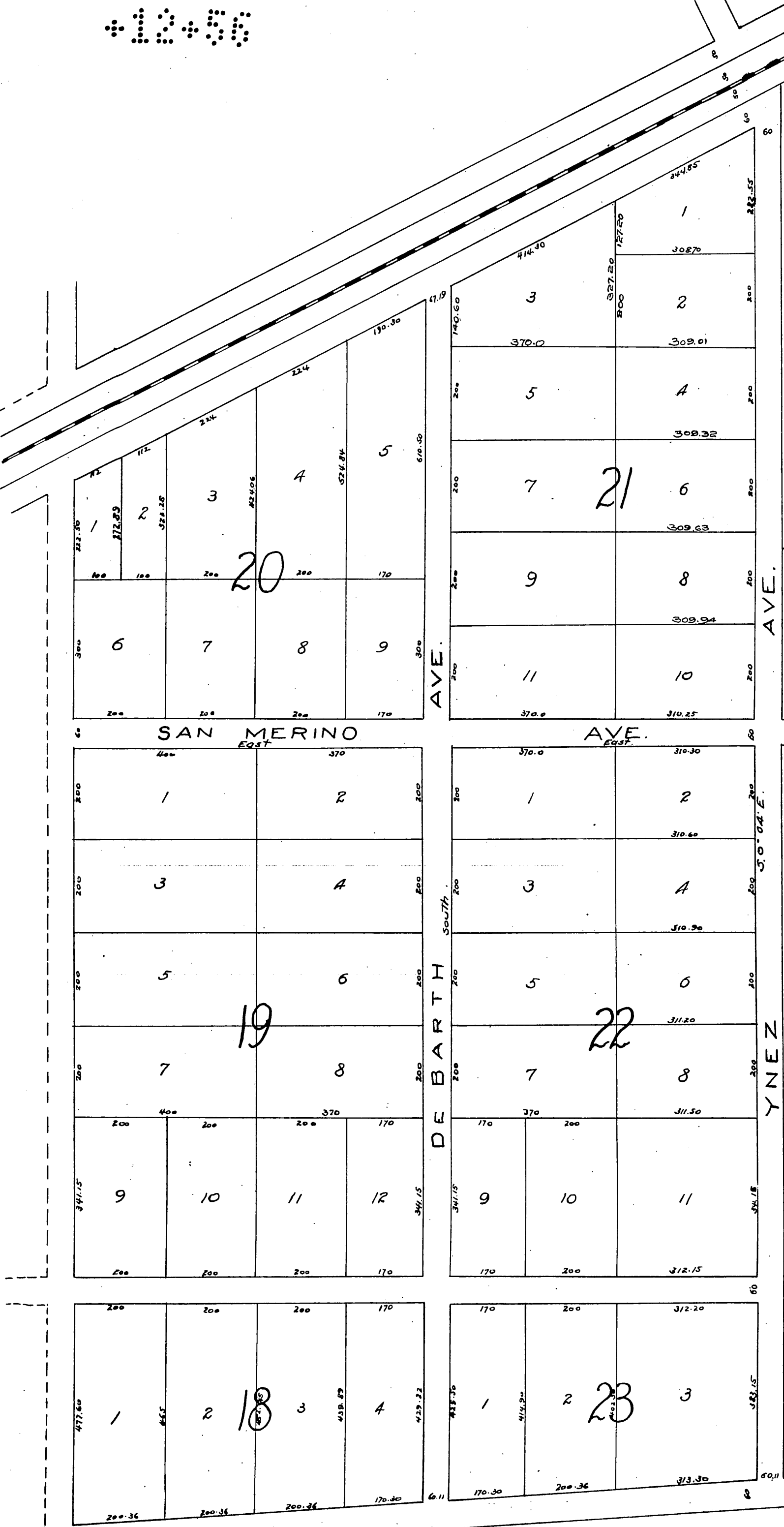


The right to determine the variety and manner of planting trees and their subsequent care on the Avenues and Streets and the width of sidewalks is hereby reserved to the San Gabriel Wine Company and its successors.





Sec. 16 Sec. 15
 Sec. 21 Sec. 22
 T. 1 S. R. 12 W.



TRACT

SHORB

A full, true and correct copy of the original recorded Dec 11, 1886 at 9⁵⁵A.M. at request of L. W. DENNIS.
 Grant A. Gibson County Recorder.
 By E. W. Bugbee Deputy.