



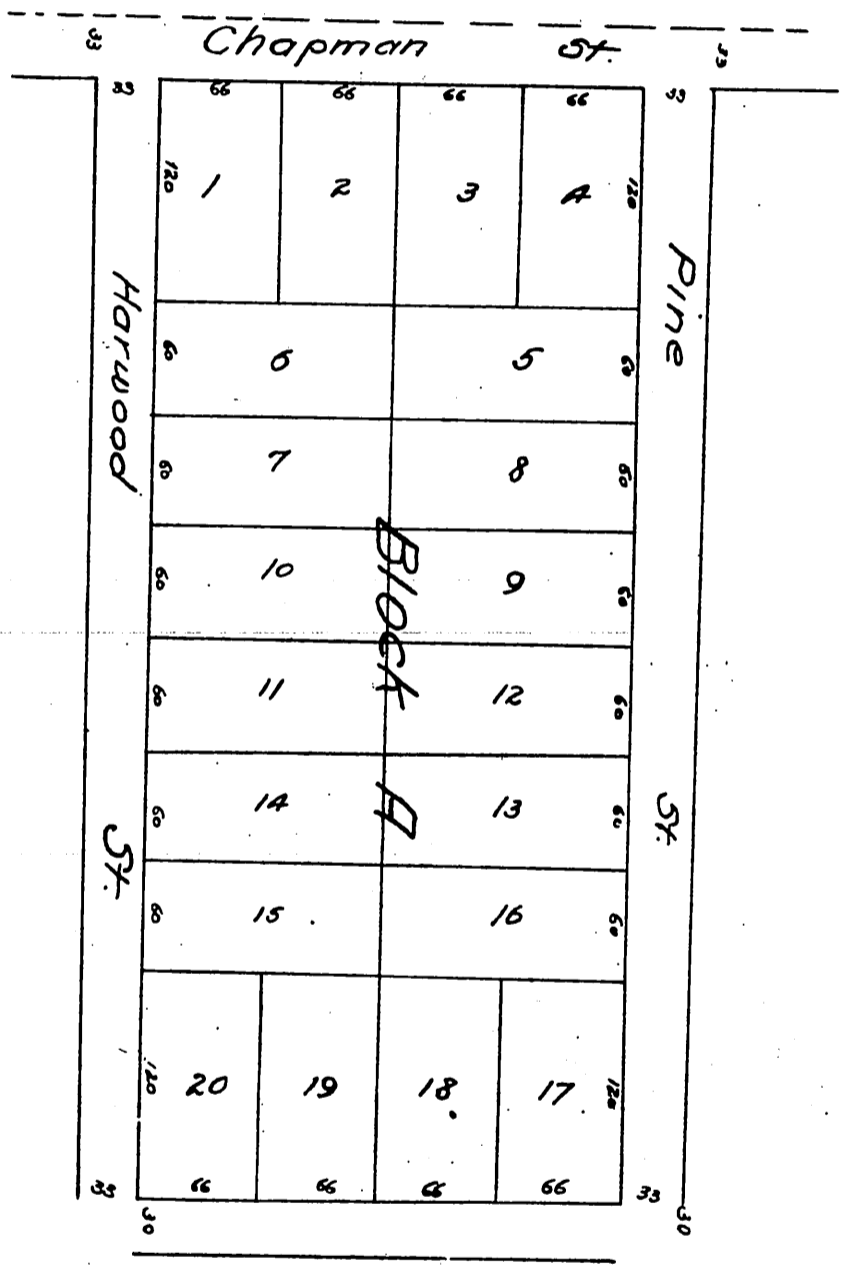
MAP
of
Block "A"
or

Lockwood's Addition to "Orange"

being the Subdivision of the Western half of lot 31 of "Richland Farm lots" in P. Santiago de Santa Ana.
in Los Angeles Co. Cal. Dec. 10th 1886.

Drawn by John T. Halsted, Orange Cal.

Scale 1 inch = 100 feet.



A full true and correct copy of the original recorded
Dec. 13th 1886 at 9 A.M. at request of O. B. Caldwell
Frank A. Gibson County Recorder.
By Geo. Bugbee Deputy