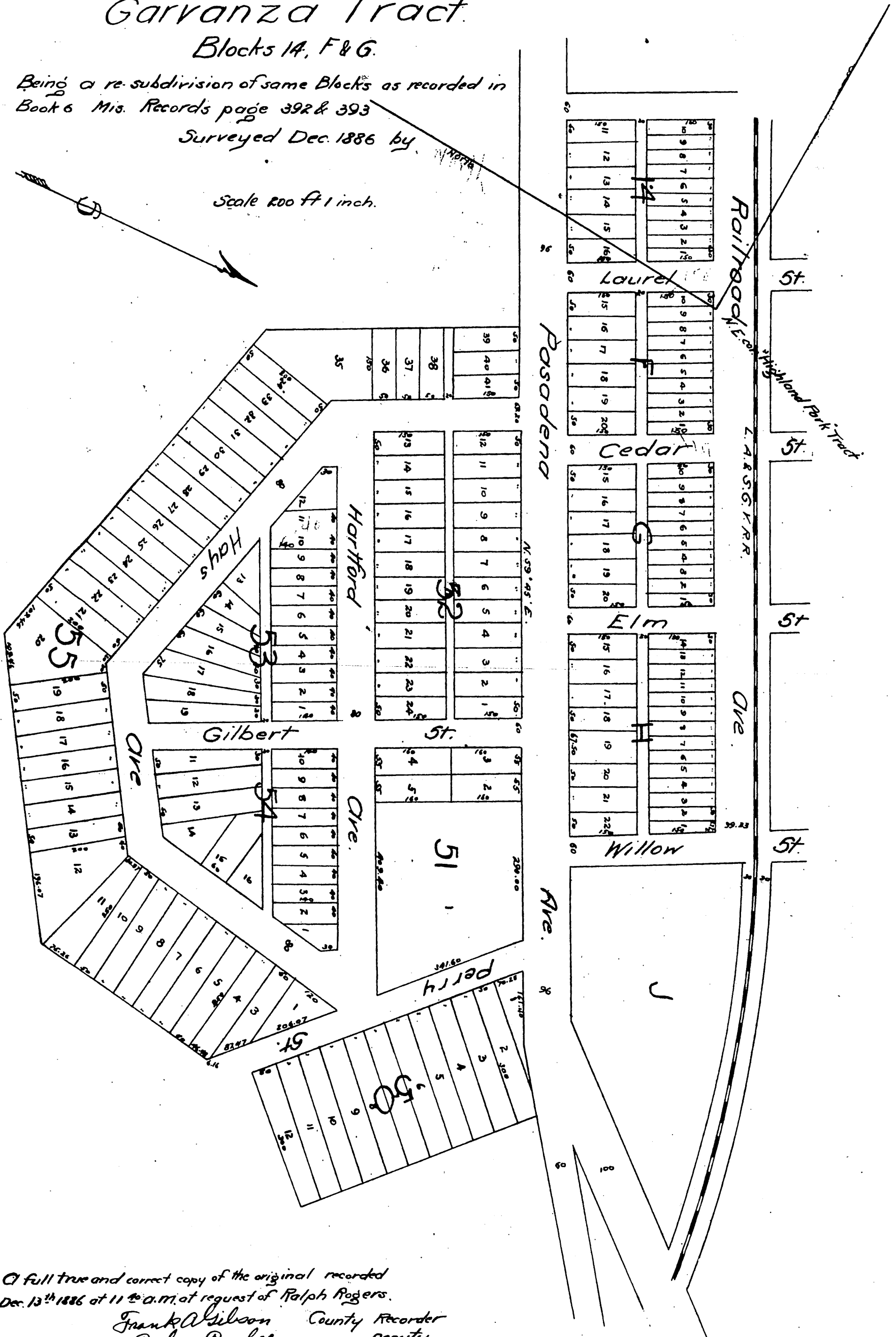


# Ralph Rogers Subdivision of a part of the Garvanza Tract Blocks 14, F & G.

Being a re-subdivision of same Blocks as recorded in  
Book 6 Mis. Records page 392 & 393  
Surveyed Dec. 1886 by

Scale 200 ft = 1 inch.



A full true and correct copy of the original recorded  
Dec. 13<sup>th</sup> 1886 at 11<sup>th</sup> a.m. at request of Ralph Rogers.  
Frank A. Wilson County Recorder  
By Geo. Bugbel Deputy.