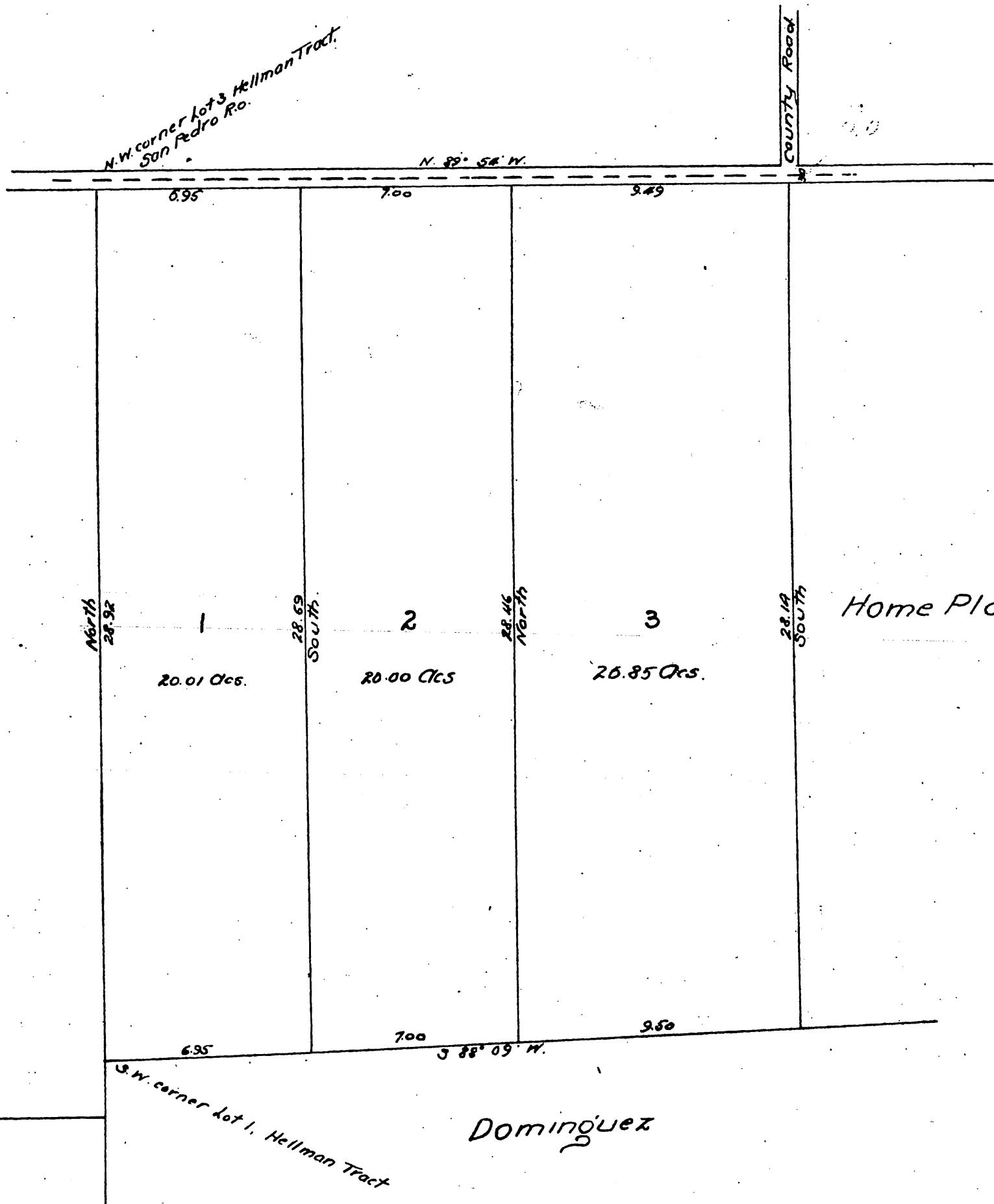


Map OF J.S. Robinson's Subdivision.

of a portion of
Lots 1, 2 & 3 Hellman Tract of the San Pedro Ro.
Surveyed Dec. 1886 by E.T. Wright.
Scale Achs. to one inch.



Dominguez

A full, true and correct copy of the original
recorded Dec. 14, 1886, at 52 min. past 8 A.M.
at request of J.S. Robinson.
Frank Gibson County Recorder
By Geo. Bugbee Deputy