



Map

OF THE

Whisler Subdivision

on the West side of San Pedro Street
on part of the Urquidez Vineyard
in the
City of Los Angeles, Cal.

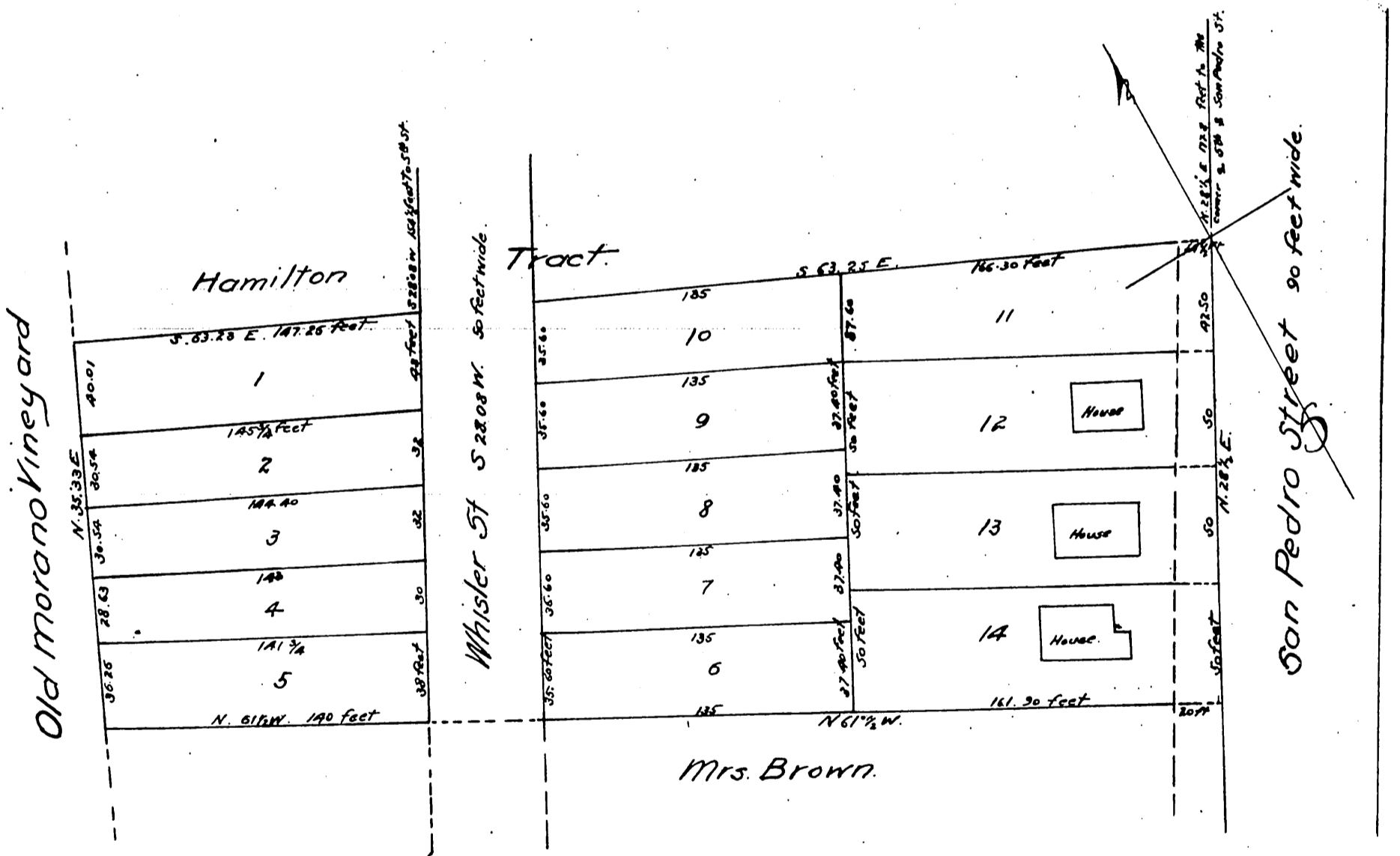
Subdivided at request of Mrs. Lourena Whisler, Nov. 25th 1886.

John Goldsworthy

Co. Surveyor Elect.

True Courses Va. 1A 1/2 E

Scale 30 ft. = 1 inch.



A full true and correct copy of the original (reduced to scale of 60 feet to one inch) recorded December 14th 1886 at 10.30 A.M. at request of Mrs. L. Whisler

Frank Gibson County Recorder

By Geo Bugbee Deputy.