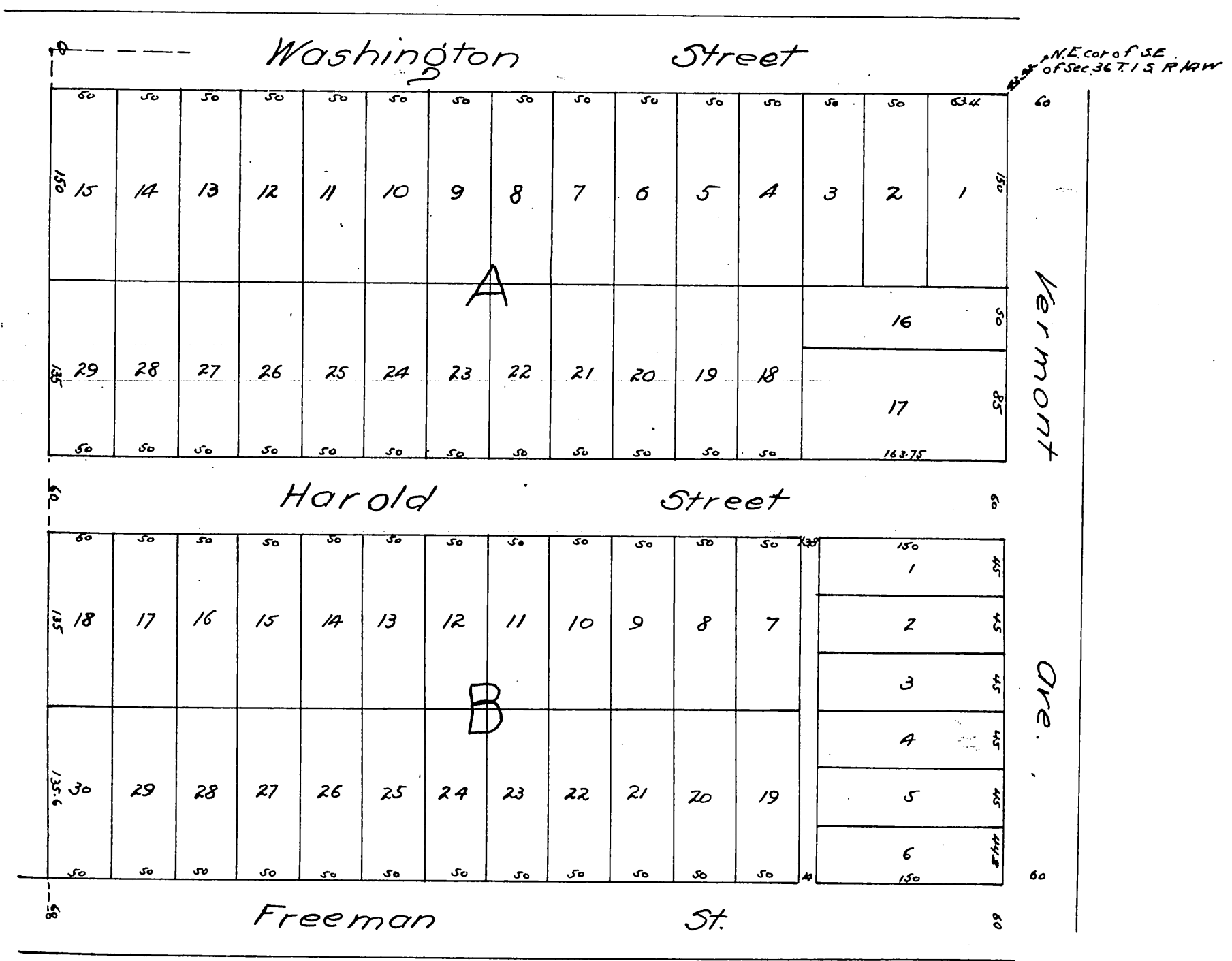


1271

Map OF THE Shafer Tract

F. D. Lonterman Surveyor.



A full, true and correct copy of the original
(reduced to the scale of 100 feet to one inch)
recorded December 16, 1886 at 4 min past 11
A.M. at request of W. G. Johnson.
Frank A. Gibson County Recorder.
By Geo. Bugbee. Deputy.