

# Map

OF THE

## Los Angeles Improvement Co's Subdivision

OF PART OF

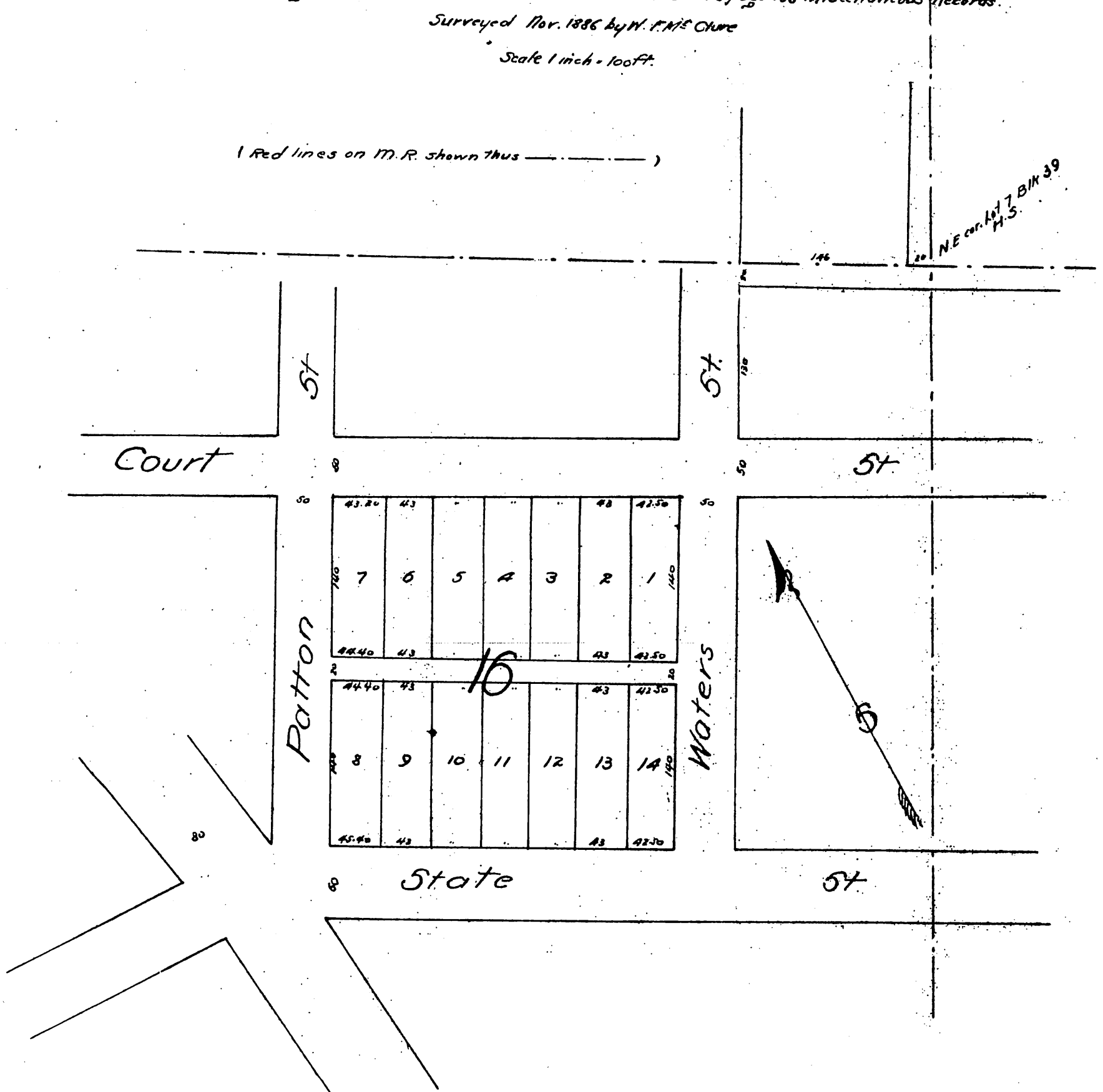
Lot 7, Blk. 39, Hancock's Survey.

Being a resubdivision of Block 16 as recorded in Book 6 page 138 Miscellaneous Records.

Surveyed Nov. 1886 by W. F. McClure

Scale 1 inch = 100ft.

( Red lines on M.R. shown thus ——— )



A full true and correct copy of the original Recorded  
 December 18<sup>th</sup> 1886 at 10<sup>45</sup> A.M. at request of H. C. Witmer  
 Frank A. Gibson County Recorder  
 Cy Geo. Bugbee Deputy