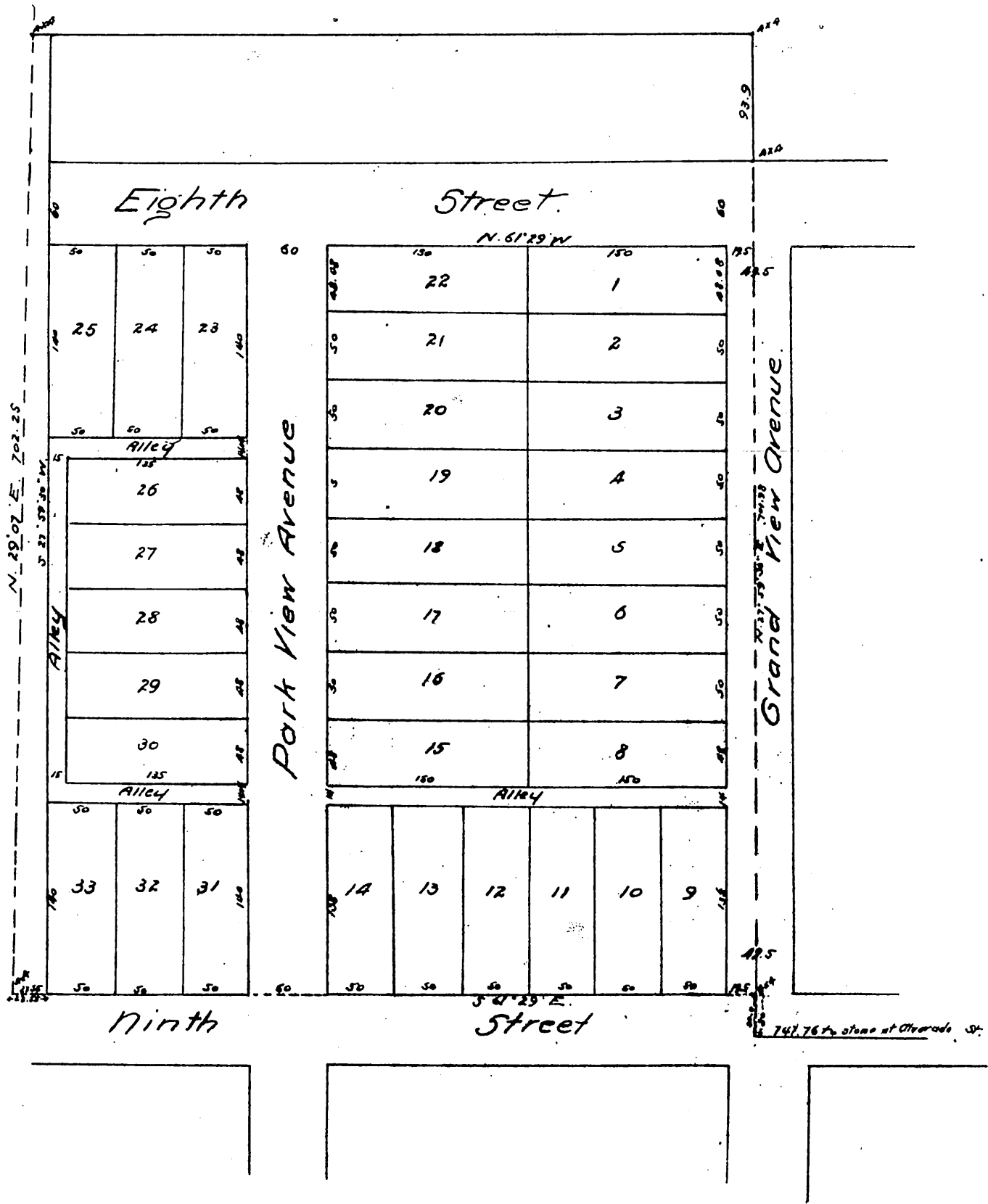


Map
 OF
 Re-Subdivision
 of the
 Monterey Tract,
 Los Angeles, Cal.
 Surveyed by Fred Eaton, Dec. 1886.



A full true and correct copy of the original
 reduced to the scale of 100 feet to one inch) recorded
 December 20th 1886. at 9th O.M. at request of Preuss & Schumacher.
 Frank Aljibson County Recorder.
 By Geo. Angbee Deputy.